

**GPR105 Polyclonal Antibody**  
Catalog # AP70135**Specification**

---

**GPR105 Polyclonal Antibody - Product Information**

Application	WB
Primary Accession	<a href="#">Q15391</a>
Reactivity	Human, Mouse, Rat
Host	Rabbit
Clonality	Polyclonal

**GPR105 Polyclonal Antibody - Additional Information****Gene ID** 9934**Other Names**

P2RY14; GPR105; KIAA0001; P2Y purinoceptor 14; P2Y14; G-protein coupled receptor 105; UDP-glucose receptor

**Dilution**

WB~~Western Blot: 1/500 - 1/2000. Immunohistochemistry: 1/100 - 1/300. Immunofluorescence: 1/200 - 1/1000. ELISA: 1/10000. Not yet tested in other applications.

**Format**

Liquid in PBS containing 50% glycerol, 0.5% BSA and 0.09% (W/V) sodium azide.

**Storage Conditions**

-20°C

**GPR105 Polyclonal Antibody - Protein Information****Name** P2RY14**Synonyms** GPR105, KIAA0001**Function**

Receptor for UDP-glucose and other UDP-sugar coupled to G- proteins. Not activated by ATP, ADP, UTP or ATP.

**Cellular Location**

Cell membrane; Multi-pass membrane protein.

**Tissue Location**

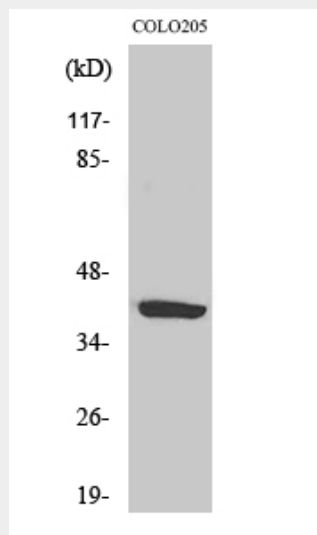
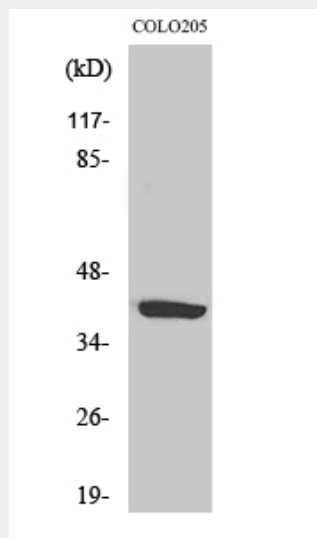
Highest expression in the placenta, adipose tissue, stomach and intestine, intermediate levels in the brain, spleen, lung and heart, lowest levels in the kidney

## GPR105 Polyclonal Antibody - Protocols

Provided below are standard protocols that you may find useful for product applications.

- [Western Blot](#)
- [Blocking Peptides](#)
- [Dot Blot](#)
- [Immunohistochemistry](#)
- [Immunofluorescence](#)
- [Immunoprecipitation](#)
- [Flow Cytometry](#)
- [Cell Culture](#)

## GPR105 Polyclonal Antibody - Images



## GPR105 Polyclonal Antibody - Background

Receptor for UDP-glucose and other UDP-sugar coupled to G-proteins. Not activated by ATP, ADP,

UTP or ATP.