

**Golgin 45 Polyclonal Antibody**  
Catalog # AP70125**Specification**

---

**Golgin 45 Polyclonal Antibody - Product Information**

Application	WB
Primary Accession	<a href="#">Q9H2G9</a>
Reactivity	Human, Mouse
Host	Rabbit
Clonality	Polyclonal

**Golgin 45 Polyclonal Antibody - Additional Information****Gene ID** 8548**Other Names**

BLZF1; JEM1; Golgin-45; Basic leucine zipper nuclear factor 1; JEM-1; p45 basic leucine-zipper nuclear factor

**Dilution**

WB~~Western Blot: 1/500 - 1/2000. Immunohistochemistry: 1/100 - 1/300. Immunofluorescence: 1/200 - 1/1000. ELISA: 1/20000. Not yet tested in other applications.

**Format**

Liquid in PBS containing 50% glycerol, 0.5% BSA and 0.09% (W/V) sodium azide.

**Storage Conditions**

-20°C

**Golgin 45 Polyclonal Antibody - Protein Information****Name** BLZF1**Synonyms** JEM1**Function**

Required for normal Golgi structure and for protein transport from the endoplasmic reticulum (ER) through the Golgi apparatus to the cell surface.

**Cellular Location**

Golgi apparatus membrane [Isoform 2]: Cytoplasm. Note=Not detected in the nucleus

**Tissue Location**

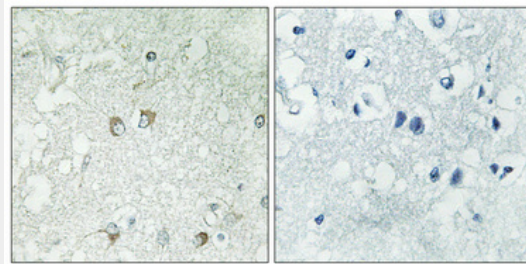
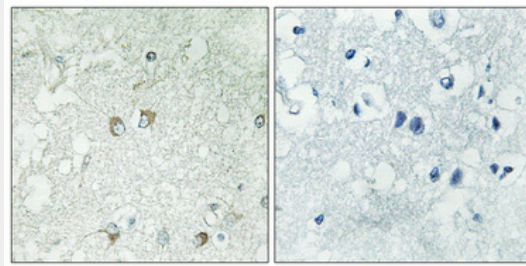
Detected in adrenal gland (PubMed:9129147).

**Golgin 45 Polyclonal Antibody - Protocols**

Provided below are standard protocols that you may find useful for product applications.

- [Western Blot](#)
- [Blocking Peptides](#)
- [Dot Blot](#)
- [Immunohistochemistry](#)
- [Immunofluorescence](#)
- [Immunoprecipitation](#)
- [Flow Cytometry](#)
- [Cell Culture](#)

### **Golgin 45 Polyclonal Antibody - Images**



### **Golgin 45 Polyclonal Antibody - Background**

Required for normal Golgi structure and for protein transport from the endoplasmic reticulum (ER) through the Golgi apparatus to the cell surface.