

Glut3 Polyclonal Antibody
Catalog # AP70112**Specification****Glut3 Polyclonal Antibody - Product Information**

Application	WB
Primary Accession	P11169
Reactivity	Human
Host	Rabbit
Clonality	Polyclonal

Glut3 Polyclonal Antibody - Additional Information**Gene ID** 6515**Other Names**

SLC2A3; GLUT3; Solute carrier family 2; facilitated glucose transporter member 3; Glucose transporter type 3, brain; GLUT-3

Dilution

WB~~Western Blot: 1/500 - 1/2000. Immunohistochemistry: 1/100 - 1/300. ELISA: 1/10000. Not yet tested in other applications.

Format

Liquid in PBS containing 50% glycerol, 0.5% BSA and 0.09% (W/V) sodium azide.

Storage Conditions

-20°C

Glut3 Polyclonal Antibody - Protein Information**Name** SLC2A3 ([HGNC:11007](#))**Function**

Facilitative glucose transporter (PubMed: [26176916](http://www.uniprot.org/citations/26176916)), PubMed: [32860739](http://www.uniprot.org/citations/32860739), PubMed: [9477959](http://www.uniprot.org/citations/9477959)). Can also mediate the uptake of various other monosaccharides across the cell membrane (PubMed: [26176916](http://www.uniprot.org/citations/26176916), PubMed: [9477959](http://www.uniprot.org/citations/9477959)). Mediates the uptake of glucose, 2- deoxyglucose, galactose, mannose, xylose and fucose, and probably also dehydroascorbate (PubMed: [26176916](http://www.uniprot.org/citations/26176916), PubMed: [9477959](http://www.uniprot.org/citations/9477959)). Does not mediate fructose transport (PubMed: [26176916](http://www.uniprot.org/citations/26176916), PubMed: [9477959](http://www.uniprot.org/citations/9477959)). Required for mesendoderm differentiation (By similarity).

Cellular Location

Cell membrane; Multi-pass membrane protein. Perikaryon {ECO:0000250|UniProtKB:Q07647}. Cell projection {ECO:0000250|UniProtKB:Q07647}. Note=Localized to densely spaced patches along neuronal processes. {ECO:0000250|UniProtKB:Q07647}

Tissue Location

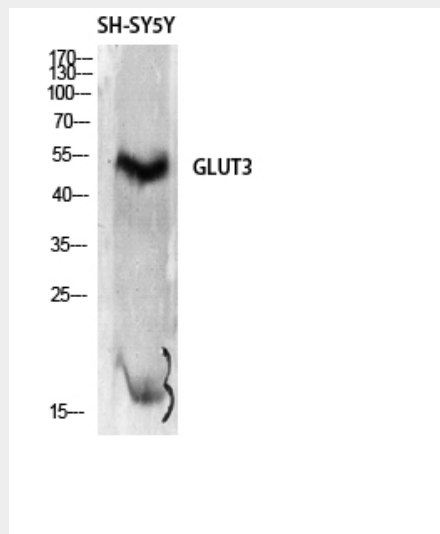
Highly expressed in brain (PubMed:8457197). Expressed in many tissues.

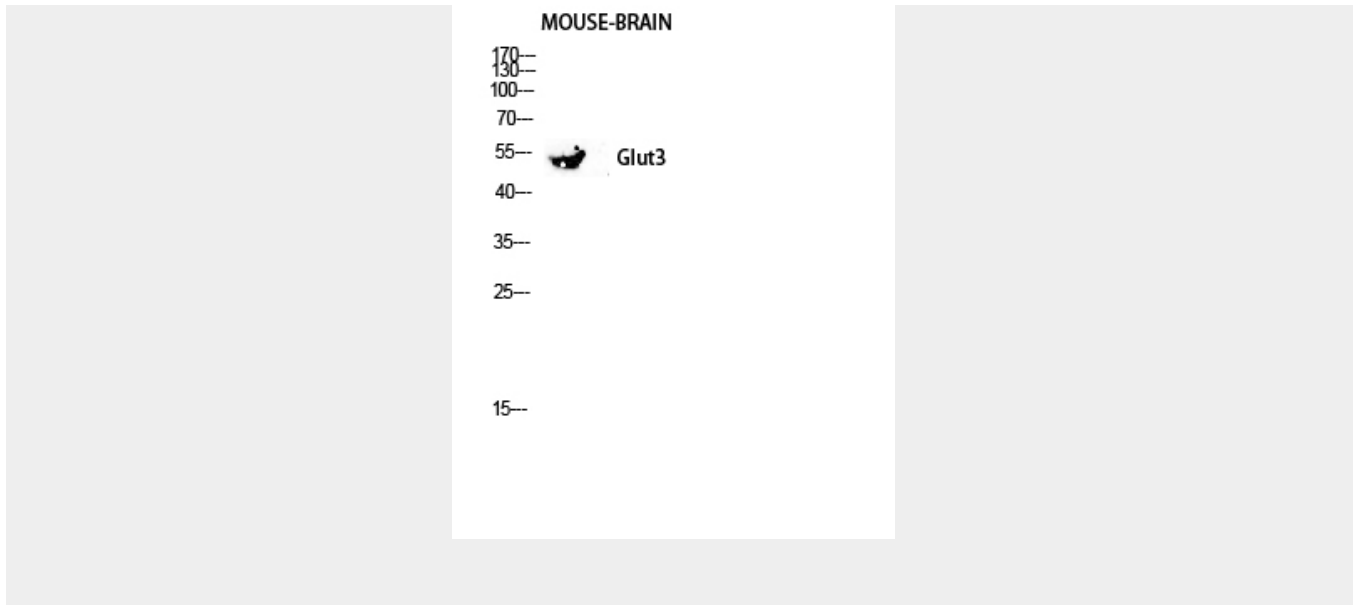
Glut3 Polyclonal Antibody - Protocols

Provided below are standard protocols that you may find useful for product applications.

- [Western Blot](#)
- [Blocking Peptides](#)
- [Dot Blot](#)
- [Immunohistochemistry](#)
- [Immunofluorescence](#)
- [Immunoprecipitation](#)
- [Flow Cytometry](#)
- [Cell Culture](#)

Glut3 Polyclonal Antibody - Images





Glut3 Polyclonal Antibody - Background

Facilitative glucose transporter that can also mediate the uptake of various other monosaccharides across the cell membrane (PubMed:9477959, PubMed:26176916). Mediates the uptake of glucose, 2-deoxyglucose, galactose, mannose, xylose and fucose, and probably also dehydroascorbate (PubMed:9477959, PubMed:26176916). Does not mediate fructose transport (PubMed:9477959, PubMed:26176916).