

## Glucuronidase $\beta$ Polyclonal Antibody

Catalog # AP70103

### Specification

---

#### Glucuronidase $\beta$ Polyclonal Antibody - Product Information

Application	IHC
Primary Accession	<a href="#">P08236</a>
Reactivity	Human, Mouse, Rat
Host	Rabbit
Clonality	Polyclonal

#### Glucuronidase $\beta$ Polyclonal Antibody - Additional Information

Gene ID 2990

##### Other Names

GUSB; Beta-glucuronidase; Beta-G1

##### Dilution

IHC~IHC-p: 100-300. Western Blot: 1/500 - 1/2000. ELISA: 1/10000. Not yet tested in other applications.

##### Format

Liquid in PBS containing 50% glycerol, 0.5% BSA and 0.09% (W/V) sodium azide.

##### Storage Conditions

-20°C

#### Glucuronidase $\beta$ Polyclonal Antibody - Protein Information

Name GUSB

##### Function

Plays an important role in the degradation of dermatan and keratan sulfates.

##### Cellular Location

Lysosome.

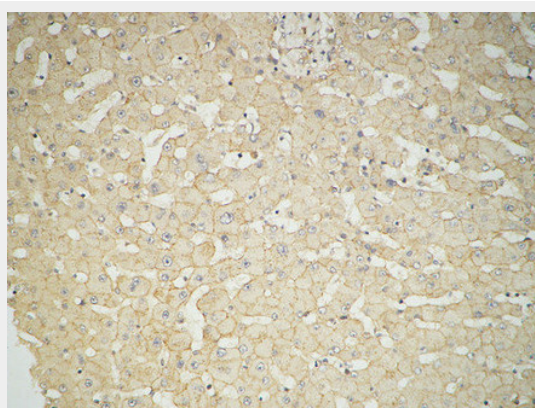
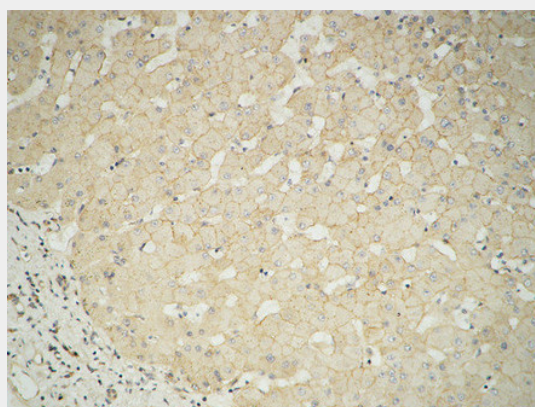
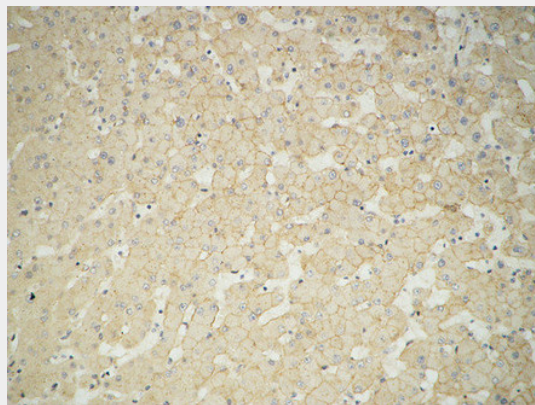
#### Glucuronidase $\beta$ Polyclonal Antibody - Protocols

Provided below are standard protocols that you may find useful for product applications.

- [Western Blot](#)
- [Blocking Peptides](#)
- [Dot Blot](#)
- [Immunohistochemistry](#)

- [Immunofluorescence](#)
- [Immunoprecipitation](#)
- [Flow Cytometry](#)
- [Cell Culture](#)

### Glucuronidase $\beta$ Polyclonal Antibody - Images



### Glucuronidase $\beta$ Polyclonal Antibody - Background

Plays an important role in the degradation of dermatan and keratan sulfates.