

Glucosidase II β Polyclonal Antibody
Catalog # AP70102**Specification****Glucosidase II β Polyclonal Antibody - Product Information**

Application	WB
Primary Accession	P14314
Reactivity	Human, Mouse
Host	Rabbit
Clonality	Polyclonal

Glucosidase II β Polyclonal Antibody - Additional Information**Gene ID** 5589**Other Names**

PRKCSH; G19P1; Glucosidase 2 subunit beta; 80K-H protein; Glucosidase II subunit beta; Protein kinase C substrate 60.1 kDa protein heavy chain; PKCSH

Dilution

WB~~Western Blot: 1/500 - 1/2000. Immunofluorescence: 1/200 - 1/1000. ELISA: 1/10000. Not yet tested in other applications.

Format

Liquid in PBS containing 50% glycerol, 0.5% BSA and 0.09% (W/V) sodium azide.

Storage Conditions

-20°C

Glucosidase II β Polyclonal Antibody - Protein Information**Name** PRKCSH {ECO:0000303|PubMed:28375157, ECO:0000312|HGNC:HGNC:9411}**Function**

Regulatory subunit of glucosidase II that cleaves sequentially the 2 innermost alpha-1,3-linked glucose residues from the Glc(2)Man(9)GlcNAc(2) oligosaccharide precursor of immature glycoproteins (PubMed:10929008). Required for efficient PKD1/Polycystin-1 biogenesis and trafficking to the plasma membrane of the primary cilia (By similarity).

Cellular Location

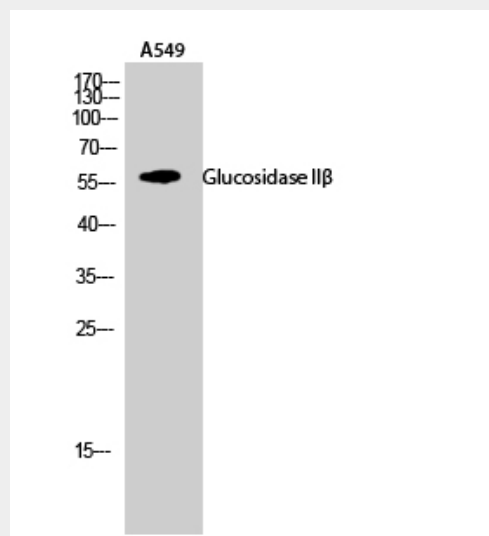
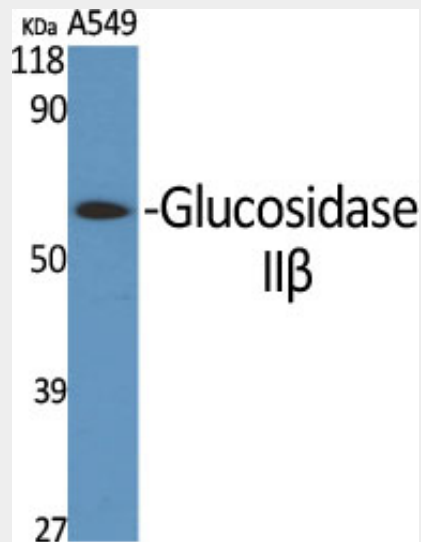
Endoplasmic reticulum {ECO:0000255|PROSITE- ProRule:PRU10138, ECO:0000305|PubMed:10929008}

Glucosidase II β Polyclonal Antibody - Protocols

Provided below are standard protocols that you may find useful for product applications.

- [Western Blot](#)
- [Blocking Peptides](#)
- [Dot Blot](#)
- [Immunohistochemistry](#)
- [Immunofluorescence](#)
- [Immunoprecipitation](#)
- [Flow Cytometry](#)
- [Cell Culture](#)

Glucosidase II β Polyclonal Antibody - Images



Glucosidase II β Polyclonal Antibody - Background

Regulatory subunit of glucosidase II that cleaves sequentially the 2 innermost alpha-1,3-linked glucose residues from the Glc(2)Man(9)GlcNAc(2) oligosaccharide precursor of immature glycoproteins (PubMed:10929008). Required for efficient PKD1/Polycystin-1 biogenesis and

trafficking to the plasma membrane of the primary cilia (By similarity).