

GIPR Polyclonal Antibody
Catalog # AP70089**Specification**

GIPR Polyclonal Antibody - Product Information

Application	WB
Primary Accession	P48546
Reactivity	Human
Host	Rabbit
Clonality	Polyclonal

GIPR Polyclonal Antibody - Additional Information**Gene ID** 2696**Other Names**

GIPR; Gastric inhibitory polypeptide receptor; GIP-R; Glucose-dependent insulinotropic polypeptide receptor

Dilution

WB~~Western Blot: 1/500 - 1/2000. Immunohistochemistry: 1/100 - 1/300. Immunofluorescence: 1/200 - 1/1000. ELISA: 1/20000. Not yet tested in other applications.

Format

Liquid in PBS containing 50% glycerol, 0.5% BSA and 0.09% (W/V) sodium azide.

Storage Conditions

-20°C

GIPR Polyclonal Antibody - Protein Information**Name** GIPR**Function**

This is a receptor for GIP. The activity of this receptor is mediated by G proteins which activate adenylyl cyclase.

Cellular Location

Cell membrane; Multi-pass membrane protein

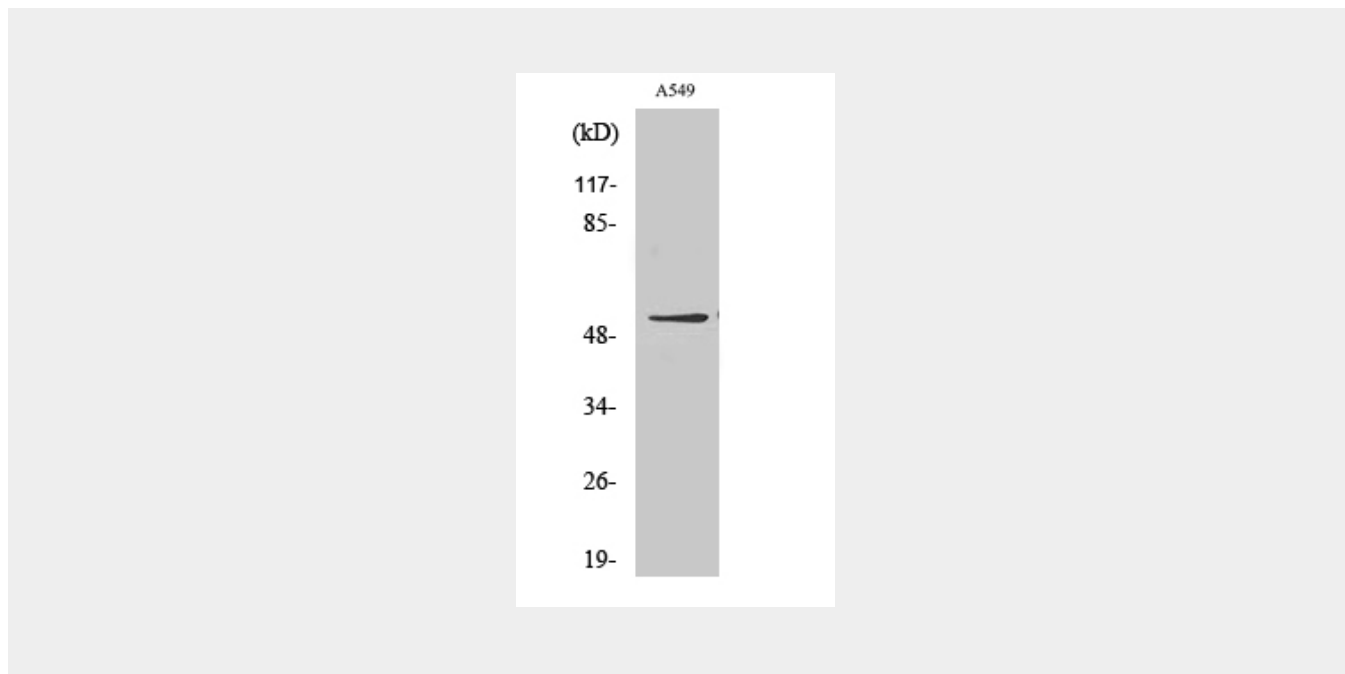
GIPR Polyclonal Antibody - Protocols

Provided below are standard protocols that you may find useful for product applications.

- [Western Blot](#)
- [Blocking Peptides](#)

- [Dot Blot](#)
- [Immunohistochemistry](#)
- [Immunofluorescence](#)
- [Immunoprecipitation](#)
- [Flow Cytometry](#)
- [Cell Culture](#)

GIPR Polyclonal Antibody - Images



GIPR Polyclonal Antibody - Background

This is a receptor for GIP. The activity of this receptor is mediated by G proteins which activate adenylyl cyclase.