

GCP6 Polyclonal Antibody
Catalog # AP70065**Specification**

GCP6 Polyclonal Antibody - Product Information

Application	WB
Primary Accession	Q96RT7
Reactivity	Human
Host	Rabbit
Clonality	Polyclonal

GCP6 Polyclonal Antibody - Additional Information**Gene ID** 85378**Other Names**

TUBGCP6; GCP6; KIAA1669; Gamma-tubulin complex component 6; GCP-6

Dilution

WB~~Western Blot: 1/500 - 1/2000. Immunohistochemistry: 1/100 - 1/300. ELISA: 1/20000. Not yet tested in other applications.

Format

Liquid in PBS containing 50% glycerol, 0.5% BSA and 0.09% (W/V) sodium azide.

Storage Conditions

-20°C

GCP6 Polyclonal Antibody - Protein Information**Name** TUBGCP6**Synonyms** GCP6, KIAA1669**Function**

Gamma-tubulin complex is necessary for microtubule nucleation at the centrosome.

Cellular Location

Cytoplasm, cytoskeleton, microtubule organizing center, centrosome

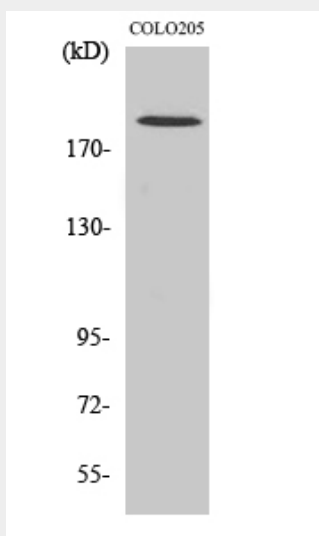
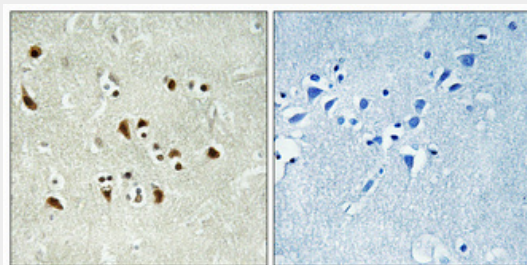
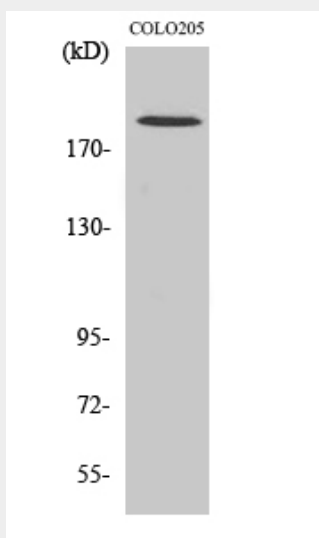
GCP6 Polyclonal Antibody - Protocols

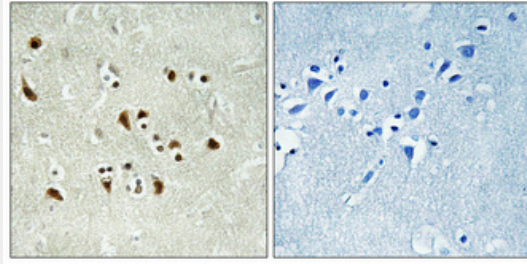
Provided below are standard protocols that you may find useful for product applications.

- [Western Blot](#)
- [Blocking Peptides](#)

- [Dot Blot](#)
- [Immunohistochemistry](#)
- [Immunofluorescence](#)
- [Immunoprecipitation](#)
- [Flow Cytometry](#)
- [Cell Culture](#)

GCP6 Polyclonal Antibody - Images





GCP6 Polyclonal Antibody - Background

Gamma-tubulin complex is necessary for microtubule nucleation at the centrosome.