

**GBDR1 Polyclonal Antibody**  
Catalog # AP70049**Specification****GBDR1 Polyclonal Antibody - Product Information**

Application	<b>WB</b>
Primary Accession	<a href="#">O9BSL1</a>
Reactivity	<b>Human</b>
Host	<b>Rabbit</b>
Clonality	<b>Polyclonal</b>

**GBDR1 Polyclonal Antibody - Additional Information****Gene ID** 10422**Other Names**

UBAC1; GBDR1; KPC2; UBADC1; Ubiquitin-associated domain-containing protein 1; UBA domain-containing protein 1; E3 ubiquitin-protein ligase subunit KPC2; Glioblastoma cell differentiation-related protein 1; Kip1 ubiquitination-promoting com

**Dilution**

WB~~Western Blot: 1/500 - 1/2000. Immunohistochemistry: 1/100 - 1/300. ELISA: 1/10000. Not yet tested in other applications.

**Format**

Liquid in PBS containing 50% glycerol, 0.5% BSA and 0.09% (W/V) sodium azide.

**Storage Conditions**

-20°C

**GBDR1 Polyclonal Antibody - Protein Information****Name** UBAC1**Function**

Non-catalytic component of the KPC complex, a E3 ubiquitin- protein ligase complex that mediates polyubiquitination of target proteins, such as CDKN1B and NFKB1 (PubMed:<a href="http://www.uniprot.org/citations/15531880" target="\_blank">15531880</a>, PubMed:<a href="http://www.uniprot.org/citations/15746103" target="\_blank">15746103</a>, PubMed:<a href="http://www.uniprot.org/citations/16227581" target="\_blank">16227581</a>, PubMed:<a href="http://www.uniprot.org/citations/25860612" target="\_blank">25860612</a>). The KPC complex catalyzes polyubiquitination and proteasome-mediated degradation of CDKN1B during G1 phase of the cell cycle (PubMed:<a href="http://www.uniprot.org/citations/15531880" target="\_blank">15531880</a>, PubMed:<a href="http://www.uniprot.org/citations/15746103" target="\_blank">15746103</a>). The KPC complex also acts as a key regulator of the NF-kappa-B signaling by promoting maturation of the NFKB1 component of NF-kappa-B by catalyzing ubiquitination of the NFKB1 p105 precursor (PubMed:<a href="http://www.uniprot.org/citations/25860612" target="\_blank">25860612</a>). Within the

KPC complex, UBAC1 acts as an adapter that promotes the transfer of target proteins that have been polyubiquitinated by RNF123/KPC1 to the 26S proteasome (PubMed:<a href="http://www.uniprot.org/citations/16227581" target="\_blank">16227581</a>).

#### Cellular Location

Cytoplasm

#### Tissue Location

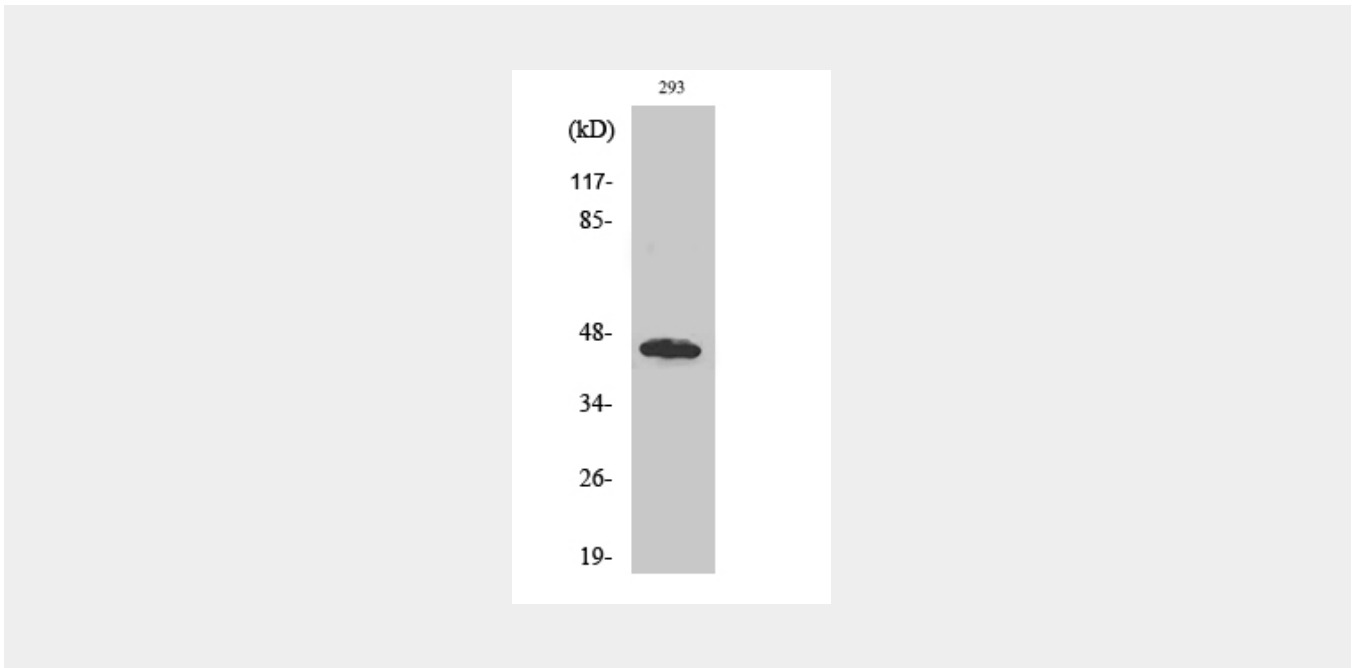
Ubiquitous..

### GBDR1 Polyclonal Antibody - Protocols

Provided below are standard protocols that you may find useful for product applications.

- [Western Blot](#)
- [Blocking Peptides](#)
- [Dot Blot](#)
- [Immunohistochemistry](#)
- [Immunofluorescence](#)
- [Immunoprecipitation](#)
- [Flow Cytometry](#)
- [Cell Culture](#)

### GBDR1 Polyclonal Antibody - Images



### GBDR1 Polyclonal Antibody - Background

Non-catalytic subunit of the KPC complex that acts as E3 ubiquitin-protein ligase. Required for poly-ubiquitination and proteasome-mediated degradation of CDKN1B during G1 phase of the cell cycle.