

GALK1 Polyclonal Antibody
Catalog # AP70025**Specification**

GALK1 Polyclonal Antibody - Product Information

Application	WB
Primary Accession	P51570
Reactivity	Human, Mouse, Rat
Host	Rabbit
Clonality	Polyclonal

GALK1 Polyclonal Antibody - Additional Information**Gene ID** 2584**Other Names**

GALK1; GALK; Galactokinase; Galactose kinase

Dilution

WB~~Western Blot: 1/500 - 1/2000. Immunohistochemistry: 1/100 - 1/300. Immunofluorescence: 1/200 - 1/1000. ELISA: 1/10000. Not yet tested in other applications.

Format

Liquid in PBS containing 50% glycerol, 0.5% BSA and 0.09% (W/V) sodium azide.

Storage Conditions

-20°C

GALK1 Polyclonal Antibody - Protein Information**Name** GALK1 ([HGNC:4118](#))**Synonyms** GALK**Function**

Catalyzes the transfer of a phosphate from ATP to alpha-D- galactose and participates in the first committed step in the catabolism of galactose.

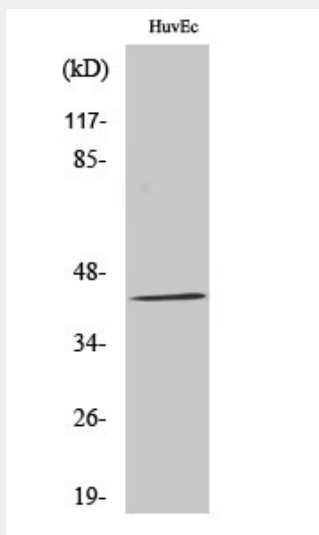
GALK1 Polyclonal Antibody - Protocols

Provided below are standard protocols that you may find useful for product applications.

- [Western Blot](#)
- [Blocking Peptides](#)
- [Dot Blot](#)
- [Immunohistochemistry](#)

- [Immunofluorescence](#)
- [Immunoprecipitation](#)
- [Flow Cytometry](#)
- [Cell Culture](#)

GALK1 Polyclonal Antibody - Images



GALK1 Polyclonal Antibody - Background

Major enzyme for galactose metabolism.