

Galectin-8 Polyclonal Antibody
Catalog # AP70023**Specification****Galectin-8 Polyclonal Antibody - Product Information**

Application	WB
Primary Accession	O00214
Reactivity	Human, Mouse
Host	Rabbit
Clonality	Polyclonal

Galectin-8 Polyclonal Antibody - Additional Information

Gene ID 3964

Other Names

LGALS8; Galectin-8; Gal-8; Po66 carbohydrate-binding protein; Po66-CBP; Prostate carcinoma tumor antigen 1; PCTA-1

Dilution

WB~~Western Blot: 1/500 - 1/2000. Immunohistochemistry: 1/100 - 1/300. Immunofluorescence: 1/200 - 1/1000. ELISA: 1/20000. Not yet tested in other applications.

Format

Liquid in PBS containing 50% glycerol, 0.5% BSA and 0.09% (W/V) sodium azide.

Storage Conditions

-20°C

Galectin-8 Polyclonal Antibody - Protein InformationName LGALS8 ([HGNC:6569](#))**Function**

Beta-galactoside-binding lectin that acts as a sensor of membrane damage caused by infection and restricts the proliferation of infecting pathogens by targeting them for autophagy (PubMed:[22246324](http://www.uniprot.org/citations/22246324)), PubMed:[28077878](http://www.uniprot.org/citations/28077878)). Detects membrane rupture by binding beta-galactoside ligands located on the luminal side of the endosome membrane; these ligands becoming exposed to the cytoplasm following rupture (PubMed:[22246324](http://www.uniprot.org/citations/22246324), PubMed:[28077878](http://www.uniprot.org/citations/28077878)). Restricts infection by initiating autophagy via interaction with CALCOCO2/NDP52 (PubMed:[22246324](http://www.uniprot.org/citations/22246324), PubMed:[28077878](http://www.uniprot.org/citations/28077878)). Required to restrict infection of bacterial invasion such as *S.typhimurium* (PubMed:[22246324](http://www.uniprot.org/citations/22246324)). Also required to restrict infection of Picornaviridae viruses (PubMed:[22246324](http://www.uniprot.org/citations/22246324)).

[28077878](http://www.uniprot.org/citations/28077878)). Has a marked preference for 3'-O-sialylated and 3'-O-sulfated glycans (PubMed:<[21288902](http://www.uniprot.org/citations/21288902)>).

Cellular Location

Cytoplasmic vesicle. Cytoplasm, cytosol

Tissue Location

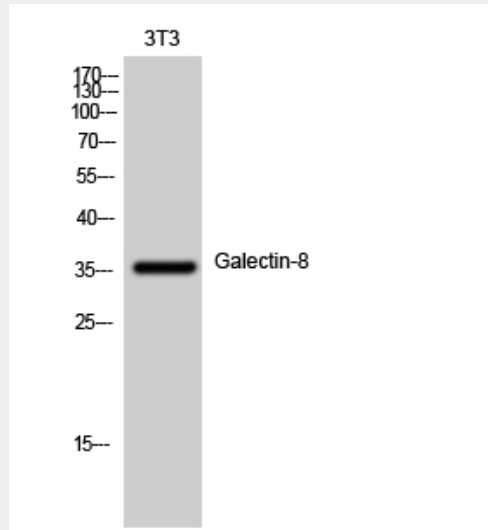
Ubiquitous. Selective expression by prostate carcinomas versus normal prostate and benign prostatic hypertrophy

Galectin-8 Polyclonal Antibody - Protocols

Provided below are standard protocols that you may find useful for product applications.

- [Western Blot](#)
- [Blocking Peptides](#)
- [Dot Blot](#)
- [Immunohistochemistry](#)
- [Immunofluorescence](#)
- [Immunoprecipitation](#)
- [Flow Cytometry](#)
- [Cell Culture](#)

Galectin-8 Polyclonal Antibody - Images



Galectin-8 Polyclonal Antibody - Background

Beta-galactoside-binding lectin that acts as a sensor of membrane damage caused by infection and restricts the proliferation of infecting pathogens by targeting them for autophagy (PubMed:22246324, PubMed:28077878). Detects membrane rupture by binding beta-galactoside ligands located on the luminal side of the endosome membrane; these ligands becoming exposed to the cytoplasm following rupture (PubMed:22246324, PubMed:28077878). Restricts infection by initiating autophagy via interaction with CALCOCO2/NDP52 (PubMed:22246324, PubMed:28077878). Required to restrict infection of bacterial invasion such as *S.typhimurium*

(PubMed:22246324). Also required to restrict infection of Picornaviridae viruses
(PubMed:28077878). Has a marked preference for 3'-O-sialylated and 3'-O-sulfated glycans
(PubMed:21288902).