

FBP3 Polyclonal Antibody
Catalog # AP69869**Specification**

FBP3 Polyclonal Antibody - Product Information

Application	WB
Primary Accession	Q96I24
Reactivity	Human, Mouse, Rat
Host	Rabbit
Clonality	Polyclonal

FBP3 Polyclonal Antibody - Additional Information**Gene ID** 8939**Other Names**

FUBP3; FBP3; Far upstream element-binding protein 3; FUSE-binding protein 3

Dilution

WB~~Western Blot: 1/500 - 1/2000. Immunohistochemistry: 1/100 - 1/300. ELISA: 1/20000. Not yet tested in other applications.

Format

Liquid in PBS containing 50% glycerol, 0.5% BSA and 0.09% (W/V) sodium azide.

Storage Conditions

-20°C

FBP3 Polyclonal Antibody - Protein Information**Name** FUBP3**Synonyms** FBP3**Function**

May interact with single-stranded DNA from the far-upstream element (FUSE). May activate gene expression.

Cellular Location

Nucleus.

Tissue Location

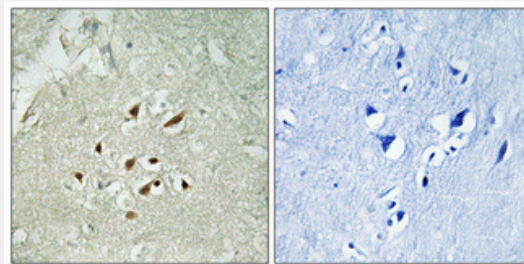
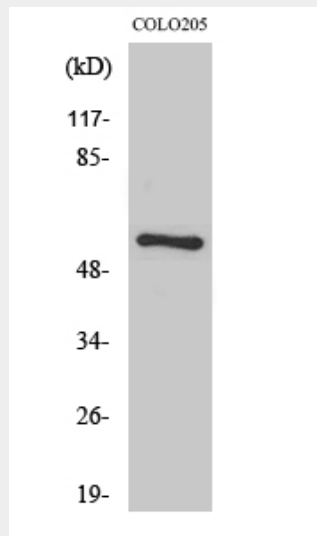
Detected in a number of cell lines.

FBP3 Polyclonal Antibody - Protocols

Provided below are standard protocols that you may find useful for product applications.

- [Western Blot](#)
- [Blocking Peptides](#)
- [Dot Blot](#)
- [Immunohistochemistry](#)
- [Immunofluorescence](#)
- [Immunoprecipitation](#)
- [Flow Cytometry](#)
- [Cell Culture](#)

FBP3 Polyclonal Antibody - Images



FBP3 Polyclonal Antibody - Background

May interact with single-stranded DNA from the far- upstream element (FUSE). May activate gene expression.