

**CLEC16A Antibody (Center)**  
**Affinity Purified Rabbit Polyclonal Antibody (Pab)**  
**Catalog # AP6983c**

**Specification**

---

**CLEC16A Antibody (Center) - Product Information**

Application	WB,E
Primary Accession	<a href="#">Q2KHT3</a>
Reactivity	Human
Host	Rabbit
Clonality	Polyclonal
Isotype	Rabbit IgG
Antigen Region	365-391

**CLEC16A Antibody (Center) - Additional Information**

**Gene ID** 23274

**Other Names**

Protein CLEC16A, C-type lectin domain family 16 member A {ECO:0000312|HGNC:HGNC:29013}, CLEC16A ([HGNC:29013](http://www.genenames.org/cgi-bin/gene_symbol_report?hgnc_id=29013)), KIAA0350

**Target/Specificity**

This CLEC16A antibody is generated from rabbits immunized with a KLH conjugated synthetic peptide between 365-391 amino acids from the Central region of human CLEC16A.

**Dilution**

WB~~1:1000

**Format**

Purified polyclonal antibody supplied in PBS with 0.09% (W/V) sodium azide. This antibody is purified through a protein A column, followed by peptide affinity purification.

**Storage**

Maintain refrigerated at 2-8°C for up to 2 weeks. For long term storage store at -20°C in small aliquots to prevent freeze-thaw cycles.

**Precautions**

CLEC16A Antibody (Center) is for research use only and not for use in diagnostic or therapeutic procedures.

**CLEC16A Antibody (Center) - Protein Information**

**Name** CLEC16A ([HGNC:29013](#))

**Synonyms** KIAA0350

**Function** Regulator of mitophagy through the upstream regulation of the RNF41/NRDP1-PRKN pathway. Mitophagy is a selective form of autophagy necessary for mitochondrial quality control. The RNF41/NRDP1-PRKN pathway regulates autophagosome-lysosome fusion during late mitophagy. May protect RNF41/NRDP1 from proteasomal degradation, RNF41/NRDP1 which regulates proteasomal degradation of PRKN. Plays a key role in beta cells functions by regulating mitophagy/autophagy and mitochondrial health.

#### Cellular Location

Endosome membrane {ECO:0000250|UniProtKB:Q80U30}; Peripheral membrane protein {ECO:0000250|UniProtKB:Q80U30}. Lysosome membrane {ECO:0000250|UniProtKB:Q80U30}; Peripheral membrane protein {ECO:0000250|UniProtKB:Q80U30}. Note=Associates with the endolysosome membrane. {ECO:0000250|UniProtKB:Q80U30}

#### Tissue Location

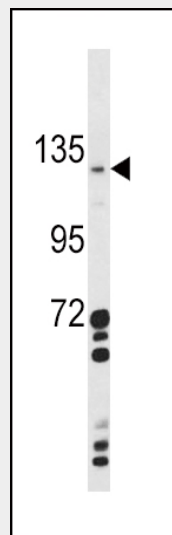
Almost exclusively expressed in immune cells, including dendritic cells, B-lymphocytes and natural killer cells

### CLEC16A Antibody (Center) - Protocols

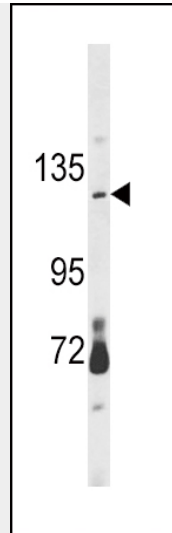
Provided below are standard protocols that you may find useful for product applications.

- [Western Blot](#)
- [Blocking Peptides](#)
- [Dot Blot](#)
- [Immunohistochemistry](#)
- [Immunofluorescence](#)
- [Immunoprecipitation](#)
- [Flow Cytometry](#)
- [Cell Culture](#)

### CLEC16A Antibody (Center) - Images



Western blot analysis of CLEC16A Antibody (Center) (Cat. #AP6983c) in A2058 cell line lysates (35ug/lane).CLEC16A (arrow) was detected using the purified Pab.



Western blot analysis of CLEC16A Antibody (Center) (Cat. #AP6983c) in mouse brain tissue lysates (35ug/lane).CLEC16A (arrow) was detected using the purified Pab.

#### **CLEC16A Antibody (Center) - Background**

CLEC16A is almost exclusively expressed in immune cells, including dendritic cells, B lymphocytes and natural killer cells. There are three isoforms.

#### **CLEC16A Antibody (Center) - References**

Hafler,D.A., et.al., N. Engl. J. Med. 357 (9), 851-862 (2007)

#### **CLEC16A Antibody (Center) - Citations**

- [Association of CLEC16A with human common variable immunodeficiency disorder and role in murine B cells.](#)