

**EWS Polyclonal Antibody**  
Catalog # AP69828**Specification**

---

**EWS Polyclonal Antibody - Product Information**

Application	<b>WB</b>
Primary Accession	<a href="#">Q01844</a>
Reactivity	<b>Human, Mouse, Rat</b>
Host	<b>Rabbit</b>
Clonality	<b>Polyclonal</b>

**EWS Polyclonal Antibody - Additional Information****Gene ID** 2130**Other Names**

EWSR1; EWS; RNA-binding protein EWS; EWS oncogene; Ewing sarcoma breakpoint region 1 protein

**Dilution**

WB~~Western Blot: 1/500 - 1/2000. ELISA: 1/10000. Not yet tested in other applications.

**Format**

Liquid in PBS containing 50% glycerol, 0.5% BSA and 0.09% (W/V) sodium azide.

**Storage Conditions**

-20°C

**EWS Polyclonal Antibody - Protein Information****Name** EWSR1**Synonyms** EWS**Function**

Might normally function as a transcriptional repressor. EWS- fusion-proteins (EFPS) may play a role in the tumorigenic process. They may disturb gene expression by mimicking, or interfering with the normal function of CTD-POLII within the transcription initiation complex. They may also contribute to an aberrant activation of the fusion protein target genes.

**Cellular Location**

Nucleus. Cytoplasm. Cell membrane. Note=Relocates from cytoplasm to ribosomes upon PTK2B/FAK2 activation

**Tissue Location**

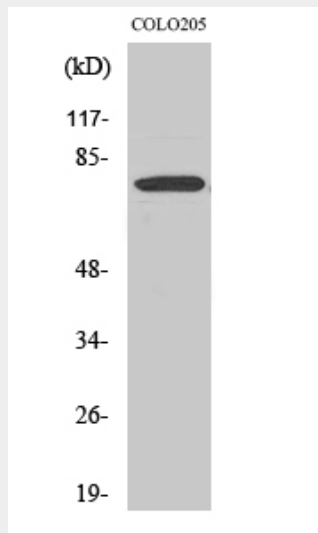
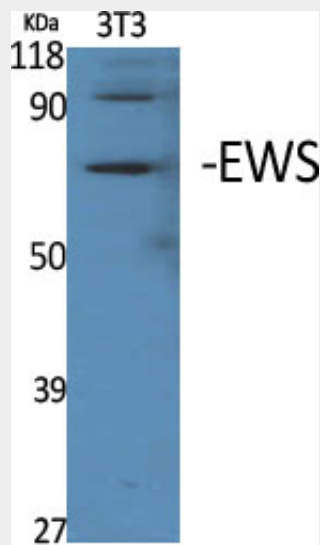
Ubiquitous.

## EWS Polyclonal Antibody - Protocols

Provided below are standard protocols that you may find useful for product applications.

- [Western Blot](#)
- [Blocking Peptides](#)
- [Dot Blot](#)
- [Immunohistochemistry](#)
- [Immunofluorescence](#)
- [Immunoprecipitation](#)
- [Flow Cytometry](#)
- [Cell Culture](#)

## EWS Polyclonal Antibody - Images



## EWS Polyclonal Antibody - Background

Might normally function as a transcriptional repressor. EWS-fusion-proteins (EFPS) may play a role

in the tumorigenic process. They may disturb gene expression by mimicking, or interfering with the normal function of CTD-POLII within the transcription initiation complex. They may also contribute to an aberrant activation of the fusion protein target genes.