

**ERdj3 Polyclonal Antibody**  
Catalog # AP69799**Specification****ERdj3 Polyclonal Antibody - Product Information**

Application	WB
Primary Accession	<a href="#">Q9UBS4</a>
Reactivity	Human, Mouse, Rat
Host	Rabbit
Clonality	Polyclonal

**ERdj3 Polyclonal Antibody - Additional Information**

Gene ID 51726

**Other Names**

DNAJB11; EDJ; ERJ3; HDJ9; PSEC0121; Dnaj homolog subfamily B member 11; APOBEC1-binding protein 2; ABBP-2; Dnaj protein homolog 9; ER-associated DNAJ; ER-associated Hsp40 co-chaperone; ER-associated dnaJ protein 3; ERdj3; ERj3p; HEDJ; Human

**Dilution**

WB~~Western Blot: 1/500 - 1/2000. Immunohistochemistry: 1/100 - 1/300. ELISA: 1/20000. Not yet tested in other applications.

**Format**

Liquid in PBS containing 50% glycerol, 0.5% BSA and 0.09% (W/V) sodium azide.

**Storage Conditions**

-20°C

**ERdj3 Polyclonal Antibody - Protein Information**

Name DNAJB11

Synonyms EDJ, ERJ3, HDJ9

**Function**

As a co-chaperone for HSPA5 it is required for proper folding, trafficking or degradation of proteins (PubMed: [10827079](http://www.uniprot.org/citations/10827079), PubMed: [15525676](http://www.uniprot.org/citations/15525676), PubMed: [29706351](http://www.uniprot.org/citations/29706351)). Binds directly to both unfolded proteins that are substrates for ERAD and nascent unfolded peptide chains, but dissociates from the HSPA5-unfolded protein complex before folding is completed (PubMed: [15525676](http://www.uniprot.org/citations/15525676)). May help recruiting HSPA5 and other chaperones to the substrate. Stimulates HSPA5 ATPase activity (PubMed: [10827079](http://www.uniprot.org/citations/10827079)). It is necessary for maturation and correct trafficking of PKD1 (PubMed: [29706351](http://www.uniprot.org/citations/29706351)).

### Cellular Location

Endoplasmic reticulum lumen Note=Associated with the ER membrane in a C-terminally epitope-tagged construct

### Tissue Location

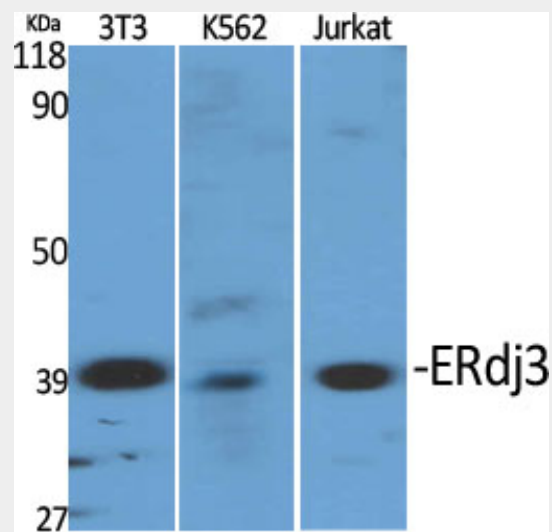
Widely expressed.

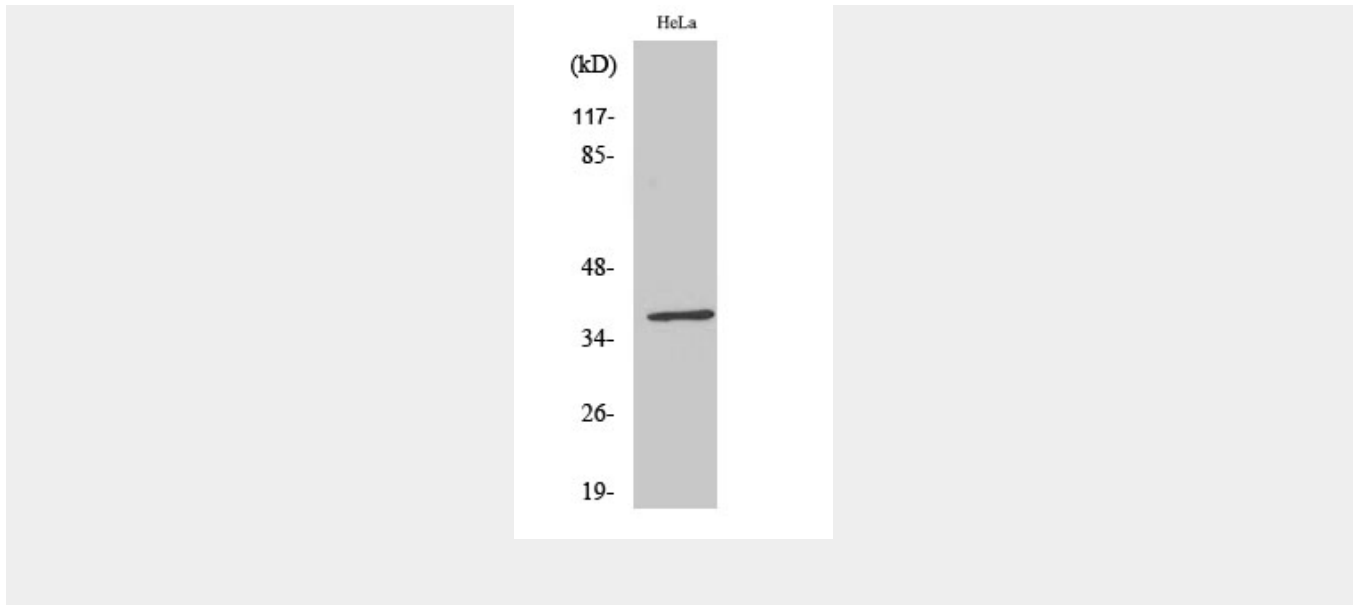
### ERdj3 Polyclonal Antibody - Protocols

Provided below are standard protocols that you may find useful for product applications.

- [Western Blot](#)
- [Blocking Peptides](#)
- [Dot Blot](#)
- [Immunohistochemistry](#)
- [Immunofluorescence](#)
- [Immunoprecipitation](#)
- [Flow Cytometry](#)
- [Cell Culture](#)

### ERdj3 Polyclonal Antibody - Images





### ERdj3 Polyclonal Antibody - Background

As a co-chaperone for HSPA5 it is required for proper folding, trafficking or degradation of proteins (PubMed:10827079, PubMed:15525676, PubMed:29706351). Binds directly to both unfolded proteins that are substrates for ERAD and nascent unfolded peptide chains, but dissociates from the HSPA5-unfolded protein complex before folding is completed (PubMed:15525676). May help recruiting HSPA5 and other chaperones to the substrate. Stimulates HSPA5 ATPase activity (PubMed:10827079). It is necessary for maturation and correct trafficking of PKD1 (PubMed:29706351).