

Emx1 Polyclonal Antibody Catalog # AP69732

Specification

Emx1 Polyclonal Antibody - Product Information

Application	WB
Primary Accession	Q04741
Reactivity	Human, Mouse, Rat
Host	Rabbit
Clonality	Polyclonal

Emx1 Polyclonal Antibody - Additional Information

Gene ID 2016

Other Names

EMX1; Homeobox protein EMX1; Empty spiracles homolog 1; Empty spiracles-like protein 1

Dilution

WB~~Western Blot: 1/500 - 1/2000. ELISA: 1/40000. Not yet tested in other applications.

Format

Liquid in PBS containing 50% glycerol, 0.5% BSA and 0.09% (W/V) sodium azide.

Storage Conditions

-20°C

Emx1 Polyclonal Antibody - Protein Information

Name EMX1 ([HGNC:3340](#))

Function

Transcription factor, which in cooperation with EMX2, acts to generate the boundary between the roof and archipallium in the developing brain. May function in combinations with OTX1/2 to specify cell fates in the developing central nervous system.

Cellular Location

Nucleus {ECO:0000255|PROSITE-ProRule:PRU00108, ECO:0000269|PubMed:20887964}.
Cytoplasm Note=Might be shuttling between the nucleus and the cytoplasm

Tissue Location

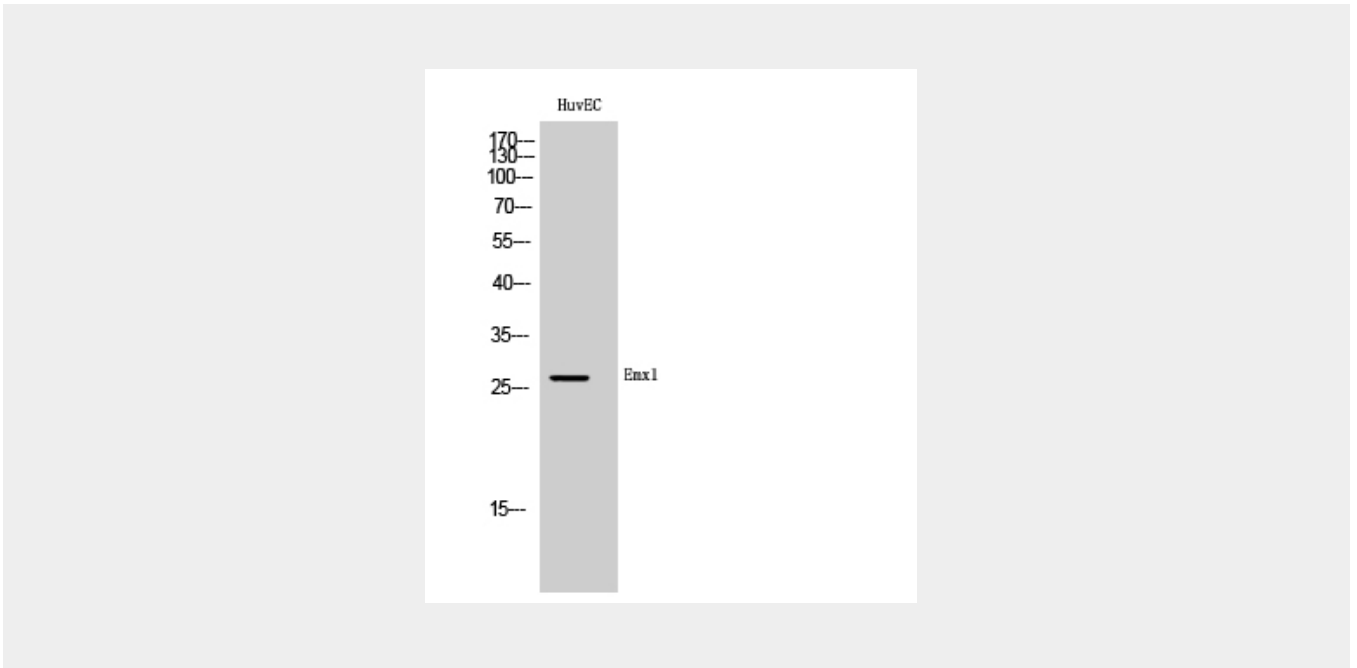
Cerebral cortex.

Emx1 Polyclonal Antibody - Protocols

Provided below are standard protocols that you may find useful for product applications.

- [Western Blot](#)
- [Blocking Peptides](#)
- [Dot Blot](#)
- [Immunohistochemistry](#)
- [Immunofluorescence](#)
- [Immunoprecipitation](#)
- [Flow Cytometry](#)
- [Cell Culture](#)

Emx1 Polyclonal Antibody - Images



Emx1 Polyclonal Antibody - Background

Transcription factor, which in cooperation with EMX2, acts to generate the boundary between the roof and archipallium in the developing brain. May function in combinations with OTX1/2 to specify cell fates in the developing central nervous system.