

**ELOVL6 Polyclonal Antibody**  
Catalog # AP69723**Specification****ELOVL6 Polyclonal Antibody - Product Information**

Application	WB
Primary Accession	<a href="#">O9H5J4</a>
Reactivity	Human, Mouse, Rat
Host	Rabbit
Clonality	Polyclonal

**ELOVL6 Polyclonal Antibody - Additional Information****Gene ID** 79071**Other Names**

ELOVL6; FACE; LCE; Elongation of very long chain fatty acids protein 6; 3-keto acyl-CoA synthase ELOVL6; ELOVL fatty acid elongase 6; ELOVL FA elongase 6; Fatty acid elongase 2; hELO2; Fatty acyl-CoA elongase; Long-chain fatty-acyl elongase

**Dilution**

WB~~Western Blot: 1/500 - 1/2000. ELISA: 1/10000. Not yet tested in other applications.

**Format**

Liquid in PBS containing 50% glycerol, 0.5% BSA and 0.09% (W/V) sodium azide.

**Storage Conditions**

-20°C

**ELOVL6 Polyclonal Antibody - Protein Information****Name** ELOVL6 {ECO:0000255|HAMAP-Rule:MF\_03206}**Synonyms** FACE, LCE**Function**

Catalyzes the first and rate-limiting reaction of the four reactions that constitute the long-chain fatty acids elongation cycle. This endoplasmic reticulum-bound enzymatic process allows the addition of 2 carbons to the chain of long- and very long-chain fatty acids (VLCFAs) per cycle. Condensing enzyme that elongates fatty acids with 12, 14 and 16 carbons with higher activity toward C16:0 acyl-CoAs. Catalyzes the synthesis of unsaturated C16 long chain fatty acids and, to a lesser extent, C18:0 and those with low desaturation degree. May participate in the production of saturated and monounsaturated VLCFAs of different chain lengths that are involved in multiple biological processes as precursors of membrane lipids and lipid mediators.

**Cellular Location**

Endoplasmic reticulum membrane {ECO:0000255|HAMAP-Rule:MF\_03206, ECO:0000269|PubMed:20937905}; Multi-pass membrane protein

{ECO:0000255|HAMAP-Rule:MF\_03206}

### Tissue Location

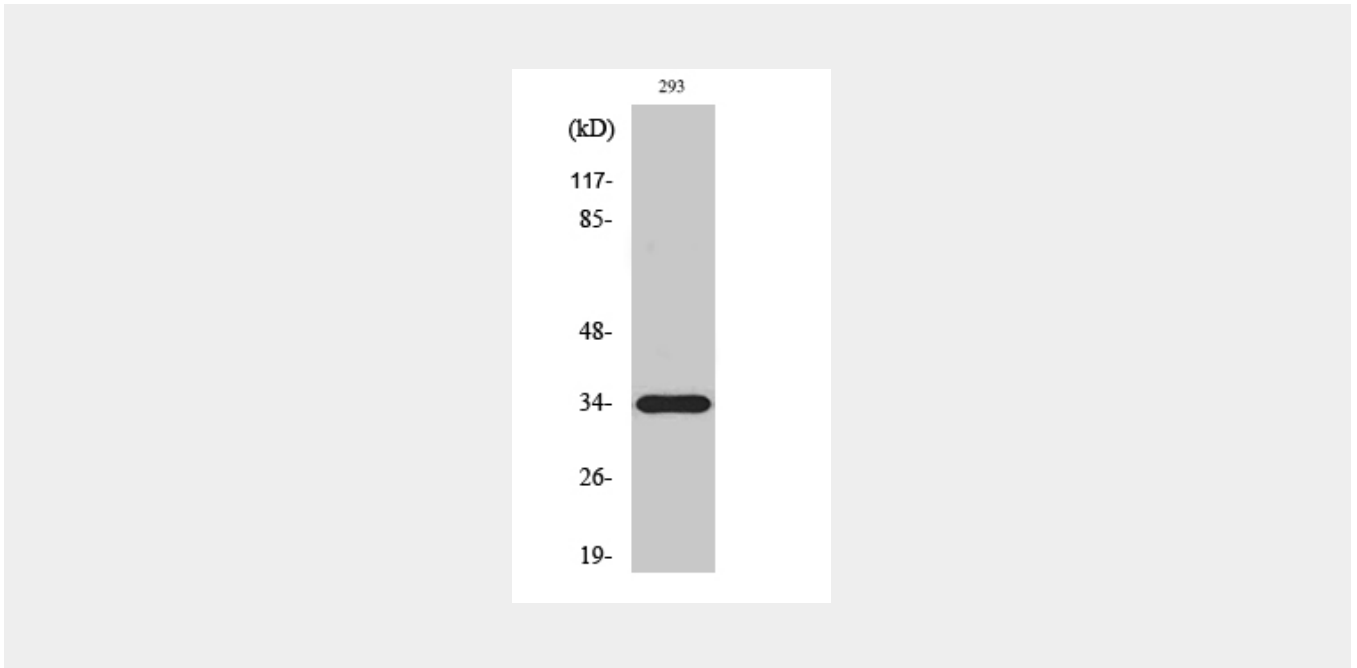
Ubiquitous..

### ELOVL6 Polyclonal Antibody - Protocols

Provided below are standard protocols that you may find useful for product applications.

- [Western Blot](#)
- [Blocking Peptides](#)
- [Dot Blot](#)
- [Immunohistochemistry](#)
- [Immunofluorescence](#)
- [Immunoprecipitation](#)
- [Flow Cytometry](#)
- [Cell Culture](#)

### ELOVL6 Polyclonal Antibody - Images



### ELOVL6 Polyclonal Antibody - Background

Catalyzes the first and rate-limiting reaction of the four reactions that constitute the long-chain fatty acids elongation cycle. This endoplasmic reticulum-bound enzymatic process allows the addition of 2 carbons to the chain of long- and very long-chain fatty acids (VLCFAs) per cycle. Condensing enzyme that elongates fatty acids with 12, 14 and 16 carbons with higher activity toward C16:0 acyl-CoAs. Catalyzes the synthesis of unsaturated C16 long chain fatty acids and, to a lesser extent, C18:0 and those with low desaturation degree. May participate in the production of saturated and monounsaturated VLCFAs of different chain lengths that are involved in multiple biological processes as precursors of membrane lipids and lipid mediators.