

**EGFR Polyclonal Antibody**  
Catalog # AP69673**Specification****EGFR Polyclonal Antibody - Product Information**

Application	WB
Primary Accession	<a href="#">P00533</a>
Reactivity	Human, Mouse, Rat
Host	Rabbit
Clonality	Polyclonal

**EGFR Polyclonal Antibody - Additional Information****Gene ID** 1956**Other Names**

EGFR; ERBB; ERBB1; HER1; Epidermal growth factor receptor; Proto-oncogene c-ErbB-1; Receptor tyrosine-protein kinase erbB-1

**Dilution**

WB~~Western Blot: 1/500 - 1/2000. ELISA: 1/10000. Not yet tested in other applications.

**Format**

Liquid in PBS containing 50% glycerol, 0.5% BSA and 0.09% (W/V) sodium azide.

**Storage Conditions**

-20°C

**EGFR Polyclonal Antibody - Protein Information****Name** EGFR ([HGNC:3236](#))**Synonyms** ERBB, ERBB1, HER1**Function**

Receptor tyrosine kinase binding ligands of the EGF family and activating several signaling cascades to convert extracellular cues into appropriate cellular responses (PubMed: [10805725](http://www.uniprot.org/citations/10805725), PubMed: [27153536](http://www.uniprot.org/citations/27153536), PubMed: [2790960](http://www.uniprot.org/citations/2790960), PubMed: [35538033](http://www.uniprot.org/citations/35538033)). Known ligands include EGF, TGFA/TGF- alpha, AREG, epigen/EPGN, BTC/betacellulin, epiregulin/EREG and HBEGF/heparin-binding EGF (PubMed: [12297049](http://www.uniprot.org/citations/12297049), PubMed: [15611079](http://www.uniprot.org/citations/15611079), PubMed: [17909029](http://www.uniprot.org/citations/17909029), PubMed: [20837704](http://www.uniprot.org/citations/20837704), PubMed: [27153536](http://www.uniprot.org/citations/27153536), PubMed: [2790960](http://www.uniprot.org/citations/2790960))

target="\_blank">2790960</a>, PubMed:<a href="http://www.uniprot.org/citations/7679104" target="\_blank">7679104</a>, PubMed:<a href="http://www.uniprot.org/citations/8144591" target="\_blank">8144591</a>, PubMed:<a href="http://www.uniprot.org/citations/9419975" target="\_blank">9419975</a>). Ligand binding triggers receptor homo- and/or heterodimerization and autophosphorylation on key cytoplasmic residues. The phosphorylated receptor recruits adapter proteins like GRB2 which in turn activates complex downstream signaling cascades. Activates at least 4 major downstream signaling cascades including the RAS-RAF-MEK-ERK, PI3 kinase-AKT, PLCgamma-PKC and STATs modules (PubMed:<a href="http://www.uniprot.org/citations/27153536" target="\_blank">27153536</a>). May also activate the NF-kappa-B signaling cascade (PubMed:<a href="http://www.uniprot.org/citations/11116146" target="\_blank">11116146</a>). Also directly phosphorylates other proteins like RGS16, activating its GTPase activity and probably coupling the EGF receptor signaling to the G protein-coupled receptor signaling (PubMed:<a href="http://www.uniprot.org/citations/11602604" target="\_blank">11602604</a>). Also phosphorylates MUC1 and increases its interaction with SRC and CTNNB1/beta-catenin (PubMed:<a href="http://www.uniprot.org/citations/11483589" target="\_blank">11483589</a>). Positively regulates cell migration via interaction with CCDC88A/GIV which retains EGFR at the cell membrane following ligand stimulation, promoting EGFR signaling which triggers cell migration (PubMed:<a href="http://www.uniprot.org/citations/20462955" target="\_blank">20462955</a>). Plays a role in enhancing learning and memory performance (By similarity). Plays a role in mammalian pain signaling (long-lasting hypersensitivity) (By similarity).

#### Cellular Location

Cell membrane; Single-pass type I membrane protein. Endoplasmic reticulum membrane; Single-pass type I membrane protein Golgi apparatus membrane; Single-pass type I membrane protein. Nucleus membrane; Single-pass type I membrane protein. Endosome. Endosome membrane. Nucleus. Note=In response to EGF, translocated from the cell membrane to the nucleus via Golgi and ER (PubMed:17909029, PubMed:20674546). Endocytosed upon activation by ligand (PubMed:17182860, PubMed:17909029, PubMed:27153536, PubMed:2790960). Colocalized with GPER1 in the nucleus of estrogen agonist-induced cancer-associated fibroblasts (CAF) (PubMed:20551055)

#### Tissue Location

Ubiquitously expressed. Isoform 2 is also expressed in ovarian cancers.

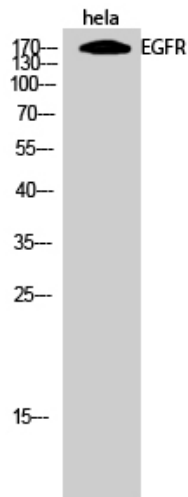
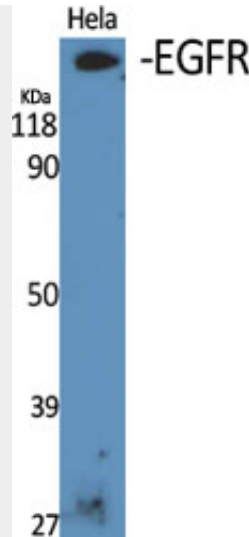
#### EGFR Polyclonal Antibody - Protocols

Provided below are standard protocols that you may find useful for product applications.

- [Western Blot](#)
- [Blocking Peptides](#)
- [Dot Blot](#)
- [Immunohistochemistry](#)
- [Immunofluorescence](#)
- [Immunoprecipitation](#)
- [Flow Cytometry](#)
- [Cell Culture](#)

#### EGFR Polyclonal Antibody - Images





### EGFR Polyclonal Antibody - Background

Receptor tyrosine kinase binding ligands of the EGF family and activating several signaling cascades to convert extracellular cues into appropriate cellular responses (PubMed:2790960, PubMed:10805725, PubMed:27153536). Known ligands include EGF, TGFA/TGF-alpha, AREG, epigen/EPGN, BTC/betacellulin, epiregulin/EREG and HBEGF/heparin-binding EGF (PubMed:2790960, PubMed:7679104, PubMed:8144591, PubMed:9419975, PubMed:15611079, PubMed:12297049, PubMed:27153536, PubMed:20837704). Ligand binding triggers receptor homo- and/or heterodimerization and autophosphorylation on key cytoplasmic residues. The phosphorylated receptor recruits adapter proteins like GRB2 which in turn activates complex downstream signaling cascades. Activates at least 4 major downstream signaling cascades including the RAS-RAF-MEK-ERK, PI3 kinase-AKT, PLCgamma-PKC and STATs modules (PubMed:27153536). May also activate the NF-kappa-B signaling cascade (PubMed:11116146). Also directly phosphorylates other proteins like RGS16, activating its GTPase activity and probably coupling the EGF receptor signaling to the G protein-coupled receptor signaling (PubMed:11602604). Also phosphorylates MUC1 and increases its interaction with SRC and CTNNB1/beta-catenin (PubMed:11483589). Plays a role in enhancing learning and memory performance (By similarity).