

**EGF Polyclonal Antibody**  
Catalog # AP69664**Specification**

---

**EGF Polyclonal Antibody - Product Information**

Application	<b>WB</b>
Primary Accession	<a href="#">P01133</a>
Reactivity	<b>Human, Mouse, Rat</b>
Host	<b>Rabbit</b>
Clonality	<b>Polyclonal</b>

**EGF Polyclonal Antibody - Additional Information****Gene ID** 1950**Other Names**

EGF; Pro-epidermal growth factor; EGF

**Dilution**

WB~~Western Blot: 1/500 - 1/2000. Immunohistochemistry: 1/100 - 1/300. ELISA: 1/10000. Not yet tested in other applications.

**Format**

Liquid in PBS containing 50% glycerol, 0.5% BSA and 0.09% (W/V) sodium azide.

**Storage Conditions**

-20°C

**EGF Polyclonal Antibody - Protein Information****Name** EGF**Function**

EGF stimulates the growth of various epidermal and epithelial tissues in vivo and in vitro and of some fibroblasts in cell culture. Magnesiotropic hormone that stimulates magnesium reabsorption in the renal distal convoluted tubule via engagement of EGFR and activation of the magnesium channel TRPM6. Can induce neurite outgrowth in motoneurons of the pond snail *Lymnaea stagnalis* in vitro (PubMed:<a href="http://www.uniprot.org/citations/10964941" target="\_blank">10964941</a>).

**Cellular Location**

Membrane; Single-pass type I membrane protein.

**Tissue Location**

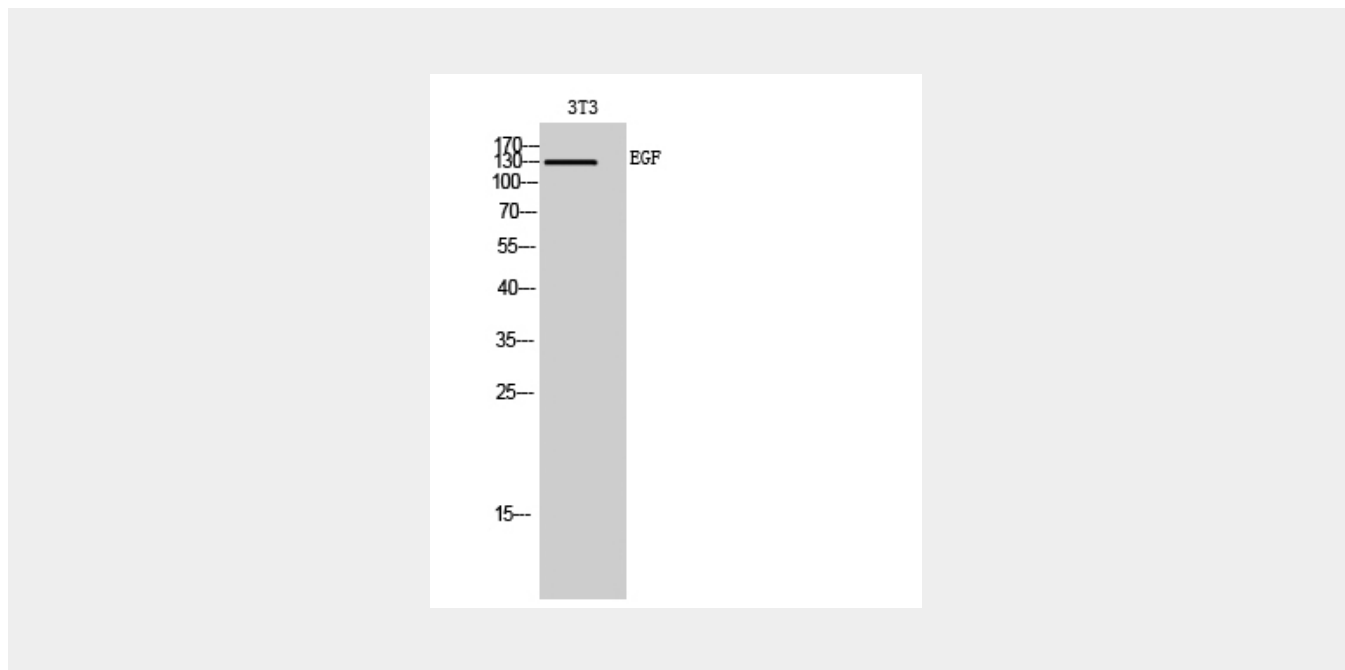
Expressed in kidney, salivary gland, cerebrum and prostate.

## EGF Polyclonal Antibody - Protocols

Provided below are standard protocols that you may find useful for product applications.

- [Western Blot](#)
- [Blocking Peptides](#)
- [Dot Blot](#)
- [Immunohistochemistry](#)
- [Immunofluorescence](#)
- [Immunoprecipitation](#)
- [Flow Cytometry](#)
- [Cell Culture](#)

## EGF Polyclonal Antibody - Images



## EGF Polyclonal Antibody - Background

EGF stimulates the growth of various epidermal and epithelial tissues in vivo and in vitro and of some fibroblasts in cell culture. Magnesiotropic hormone that stimulates magnesium reabsorption in the renal distal convoluted tubule via engagement of EGFR and activation of the magnesium channel TRPM6. Can induce neurite outgrowth in motoneurons of the pond snail *Lymnaea stagnalis* in vitro (PubMed:10964941).