

**EFP Polyclonal Antibody**  
Catalog # AP69661**Specification****EFP Polyclonal Antibody - Product Information**

Application	WB
Primary Accession	<a href="#">Q14258</a>
Reactivity	Human
Host	Rabbit
Clonality	Polyclonal

**EFP Polyclonal Antibody - Additional Information****Gene ID** 7706**Other Names**

TRIM25; EFP; RNF147; ZNF147; E3 ubiquitin/ISG15 ligase TRIM25; Estrogen-responsive finger protein; RING finger protein 147; Tripartite motif-containing protein 25; Ubiquitin/ISG15-conjugating enzyme TRIM25; Zinc finger protein 147

**Dilution**

WB~~Western Blot: 1/500 - 1/2000. Immunohistochemistry: 1/100 - 1/300. ELISA: 1/10000. Not yet tested in other applications.

**Format**

Liquid in PBS containing 50% glycerol, 0.5% BSA and 0.09% (W/V) sodium azide.

**Storage Conditions**

-20°C

**EFP Polyclonal Antibody - Protein Information****Name** TRIM25**Synonyms** EFP {ECO:0000303|PubMed:8248217}, RNF147**Function**

Functions as a ubiquitin E3 ligase and as an ISG15 E3 ligase (PubMed:<a href="http://www.uniprot.org/citations/16352599" target="\_blank">16352599</a>). Involved in innate immune defense against viruses by mediating ubiquitination of RIGI and IFIH1 (PubMed:<a href="http://www.uniprot.org/citations/17392790" target="\_blank">17392790</a>, PubMed:<a href="http://www.uniprot.org/citations/29357390" target="\_blank">29357390</a>, PubMed:<a href="http://www.uniprot.org/citations/30193849" target="\_blank">30193849</a>, PubMed:<a href="http://www.uniprot.org/citations/31710640" target="\_blank">31710640</a>, PubMed:<a href="http://www.uniprot.org/citations/33849980" target="\_blank">33849980</a>, PubMed:<a href="http://www.uniprot.org/citations/36045682" target="\_blank">36045682</a>). Mediates 'Lys-63'-linked polyubiquitination of the RIGI N-terminal CARD-like region and may play a role in signal transduction that leads to the production of interferons in response to viral infection

(PubMed:<a href="http://www.uniprot.org/citations/17392790" target="\_blank">17392790</a>, PubMed:<a href="http://www.uniprot.org/citations/23950712" target="\_blank">23950712</a>). Mediates 'Lys-63'- linked polyubiquitination of IFIH1 (PubMed:<a href="http://www.uniprot.org/citations/30193849" target="\_blank">30193849</a>). Promotes ISGylation of 14-3-3 sigma (SFN), an adapter protein implicated in the regulation of a large spectrum signaling pathway (PubMed:<a href="http://www.uniprot.org/citations/16352599" target="\_blank">16352599</a>, PubMed:<a href="http://www.uniprot.org/citations/17069755" target="\_blank">17069755</a>). Mediates estrogen action in various target organs (PubMed:<a href="http://www.uniprot.org/citations/22452784" target="\_blank">22452784</a>). Mediates the ubiquitination and subsequent proteasomal degradation of ZFHX3 (PubMed:<a href="http://www.uniprot.org/citations/22452784" target="\_blank">22452784</a>). Plays a role in promoting the restart of stalled replication forks via interaction with the KHDC3L-OOEP scaffold and subsequent ubiquitination of BLM, resulting in the recruitment and retention of BLM at DNA replication forks (By similarity). Plays an essential role in the antiviral activity of ZAP/ZC3HAV1; an antiviral protein which inhibits the replication of certain viruses. Mechanistically, mediates 'Lys-63'-linked polyubiquitination of ZAP/ZC3HAV1 that is required for its optimal binding to target mRNA (PubMed:<a href="http://www.uniprot.org/citations/28060952" target="\_blank">28060952</a>, PubMed:<a href="http://www.uniprot.org/citations/28202764" target="\_blank">28202764</a>). Mediates also the ubiquitination of various substrates implicated in stress granule formation, nonsense-mediated mRNA decay, nucleoside synthesis and mRNA translation and stability (PubMed:<a href="http://www.uniprot.org/citations/36067236" target="\_blank">36067236</a>).

#### Cellular Location

Cytoplasm. Cytoplasm, Stress granule. Nucleus {ECO:0000250|UniProtKB:Q61510}

#### Tissue Location

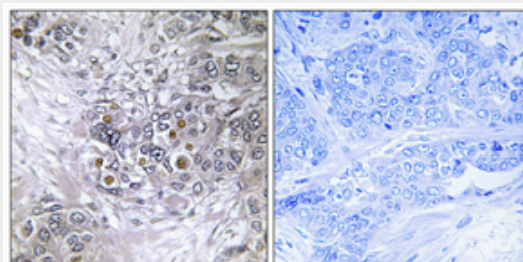
Expressed in breast tumors (at protein level). Ubiquitous.

### EFP Polyclonal Antibody - Protocols

Provided below are standard protocols that you may find useful for product applications.

- [Western Blot](#)
- [Blocking Peptides](#)
- [Dot Blot](#)
- [Immunohistochemistry](#)
- [Immunofluorescence](#)
- [Immunoprecipitation](#)
- [Flow Cytometry](#)
- [Cell Culture](#)

### EFP Polyclonal Antibody - Images



### EFP Polyclonal Antibody - Background

Functions as a ubiquitin E3 ligase and as an ISG15 E3 ligase (PubMed:16352599). Involved in innate immune defense against viruses by mediating ubiquitination of DDX58 and IFIH1 (PubMed:17392790, PubMed:30193849). Mediates 'Lys-63'-linked polyubiquitination of the DDX58 N-terminal CARD-like region which is crucial for triggering the cytosolic signal transduction that leads to the production of interferons in response to viral infection (PubMed:17392790). Mediates 'Lys-63'-linked polyubiquitination of IFIH1 (PubMed:30193849). Promotes ISGylation of 14-3-3 sigma (SFN), an adapter protein implicated in the regulation of a large spectrum signaling pathway (PubMed:16352599, PubMed:17069755). Mediates estrogen action in various target organs (PubMed:22452784). Mediates the ubiquitination and subsequent proteasomal degradation of ZFH3 (PubMed:22452784).