

CR2 Antibody (C-term)
Affinity Purified Rabbit Polyclonal Antibody (Pab)
Catalog # AP6965b

Specification

CR2 Antibody (C-term) - Product Information

Application	WB, IHC-P, FC,E
Primary Accession	P20023
Reactivity	Human
Host	Rabbit
Clonality	Polyclonal
Isotype	Rabbit IgG
Antigen Region	986-1014

CR2 Antibody (C-term) - Additional Information

Gene ID 1380

Other Names

Complement receptor type 2, Cr2, Complement C3d receptor, Epstein-Barr virus receptor, EBV receptor, CD21, CR2, C3DR

Target/Specificity

This CR2 antibody is generated from rabbits immunized with a KLH conjugated synthetic peptide between 986-1014 amino acids from the C-terminal region of human CR2.

Dilution

WB~~1:1000
IHC-P~~1:50~100
FC~~1:10~50

Format

Purified polyclonal antibody supplied in PBS with 0.09% (W/V) sodium azide. This antibody is purified through a protein A column, followed by peptide affinity purification.

Storage

Maintain refrigerated at 2-8°C for up to 2 weeks. For long term storage store at -20°C in small aliquots to prevent freeze-thaw cycles.

Precautions

CR2 Antibody (C-term) is for research use only and not for use in diagnostic or therapeutic procedures.

CR2 Antibody (C-term) - Protein Information

Name CR2

Synonyms C3DR

Function Receptor for complement C3, for the Epstein-Barr virus on human B-cells and T-cells and for HNRNPU (PubMed:[7753047](#)). Participates in B lymphocytes activation (PubMed:[7753047](#)).

Cellular Location

Cell membrane; Single-pass type I membrane protein

Tissue Location

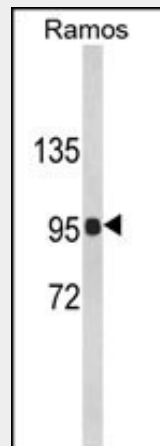
Mature B-lymphocytes, T-lymphocytes, pharyngeal epithelial cells, astrocytes and follicular dendritic cells of the spleen

CR2 Antibody (C-term) - Protocols

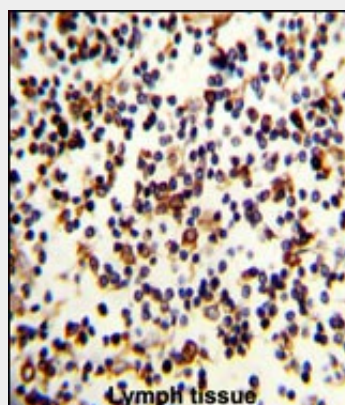
Provided below are standard protocols that you may find useful for product applications.

- [Western Blot](#)
- [Blocking Peptides](#)
- [Dot Blot](#)
- [Immunohistochemistry](#)
- [Immunofluorescence](#)
- [Immunoprecipitation](#)
- [Flow Cytometry](#)
- [Cell Culture](#)

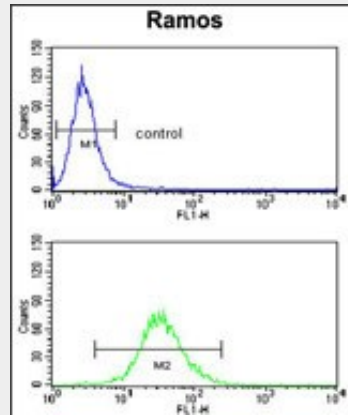
CR2 Antibody (C-term) - Images



Western blot analysis of CR2 Antibody (C-term) (Cat. #AP6965b) in Ramos cell line lysates (35ug/lane). CR2 (arrow) was detected using the purified Pab.



Formalin-fixed and paraffin-embedded human Lymph reacted with CR2 Antibody (C-term), which was peroxidase-conjugated to the secondary antibody, followed by DAB staining. This data demonstrates the use of this antibody for immunohistochemistry; clinical relevance has not been evaluated.



CR2 Antibody (C-term) (Cat. #AP6965b) flow cytometry analysis of Ramos cells (bottom histogram) compared to a negative control cell (top histogram). FITC-conjugated goat-anti-rabbit secondary antibodies were used for the analysis.

CR2 Antibody (C-term) - Background

CR2 is a membrane protein, which functions as a receptor for Epstein-Barr virus (EBV) binding on B and T lymphocytes.

CR2 Antibody (C-term) - References

Rikova, K., et al., Cell 131 (6), 1190-1203 (2007)