

Dyrk1B Polyclonal Antibody
Catalog # AP69619**Specification****Dyrk1B Polyclonal Antibody - Product Information**

Application	IHC
Primary Accession	Q9Y463
Reactivity	Human, Mouse
Host	Rabbit
Clonality	Polyclonal

Dyrk1B Polyclonal Antibody - Additional Information**Gene ID** 9149**Other Names**

DYRK1B; MIRK; Dual specificity tyrosine-phosphorylation-regulated kinase 1B; Minibrain-related kinase; Mirk protein kinase

Dilution

IHC~~Western blot: 1/500 - 1/1000. Immunohistochemistry: 1/100 - 1/300. ELISA: 1/20000. Not yet tested in other applications.

Format

Liquid in PBS containing 50% glycerol, 0.5% BSA and 0.09% (W/V) sodium azide.

Storage Conditions

-20°C

Dyrk1B Polyclonal Antibody - Protein Information**Name** DYRK1B**Synonyms** MIRK**Function**

Dual-specificity kinase which possesses both serine/threonine and tyrosine kinase activities. Plays an essential role in ribosomal DNA (rDNA) double-strand break repair and rDNA copy number maintenance (PubMed:33469661). During DNA damage, mediates transcription silencing in part via phosphorylating and enforcing DSB accumulation of the histone methyltransferase EHMT2 (PubMed:32611815). Enhances the transcriptional activity of TCF1/HNF1A and FOXO1. Inhibits epithelial cell migration. Mediates colon carcinoma cell survival in mitogen-poor environments. Inhibits the SHH and WNT1 pathways, thereby enhancing adipogenesis. In addition, promotes expression of the gluconeogenic enzyme glucose-6-phosphatase catalytic subunit 1 (G6PC1).

Cellular Location

Nucleus. Nucleus, nucleolus. Chromosome. Note=Localizes to sites of double-strand breaks (DSBs) following DNA damage.

Tissue Location

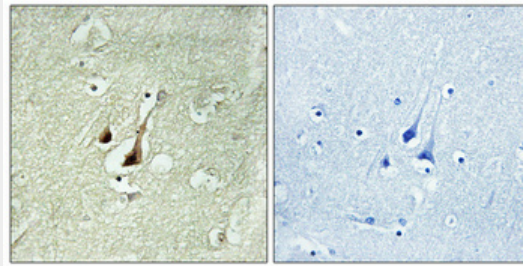
Highest expression in skeletal muscle, testis, heart and brain with little expression in colon or lung. Expressed in a variety of tumor cell lines.

Dyrk1B Polyclonal Antibody - Protocols

Provided below are standard protocols that you may find useful for product applications.

- [Western Blot](#)
- [Blocking Peptides](#)
- [Dot Blot](#)
- [Immunohistochemistry](#)
- [Immunofluorescence](#)
- [Immunoprecipitation](#)
- [Flow Cytometry](#)
- [Cell Culture](#)

Dyrk1B Polyclonal Antibody - Images



Immunohistochemical analysis of paraffin-embedded Human brain. Antibody was diluted at 1:100(4°,overnight). High-pressure and temperature Tris-EDTA,pH8.0 was used for antigen retrieval. Negative control (right) obtained from antibody pre-absorbed by immunogen peptide.

Dyrk1B Polyclonal Antibody - Background

Dual-specificity kinase which possesses both serine/threonine and tyrosine kinase activities. Enhances the transcriptional activity of TCF1/HNF1A and FOXO1. Inhibits epithelial cell migration. Mediates colon carcinoma cell survival in mitogen-poor environments. Inhibits the SHH and WNT1 pathways, thereby enhancing adipogenesis. In addition, promotes expression of the gluconeogenic enzyme glucose-6-phosphatase (G6PC).