

**Dsg2 Polyclonal Antibody**  
Catalog # AP69601**Specification**

---

**Dsg2 Polyclonal Antibody - Product Information**

Application	<b>WB</b>
Primary Accession	<a href="#">Q14126</a>
Reactivity	<b>Human</b>
Host	<b>Rabbit</b>
Clonality	<b>Polyclonal</b>

**Dsg2 Polyclonal Antibody - Additional Information****Gene ID** 1829**Other Names**

DSG2; CDHF5; Desmoglein-2; Cadherin family member 5; HDGC

**Dilution**

WB~~Western Blot: 1/500 - 1/2000. ELISA: 1/40000. Not yet tested in other applications.

**Format**

Liquid in PBS containing 50% glycerol, 0.5% BSA and 0.09% (W/V) sodium azide.

**Storage Conditions**

-20°C

**Dsg2 Polyclonal Antibody - Protein Information****Name** DSG2**Synonyms** CDHF5**Function**

Component of intercellular desmosome junctions. Involved in the interaction of plaque proteins and intermediate filaments mediating cell-cell adhesion.

**Cellular Location**

Cell membrane; Single-pass type I membrane protein. Cell junction, desmosome

**Tissue Location**

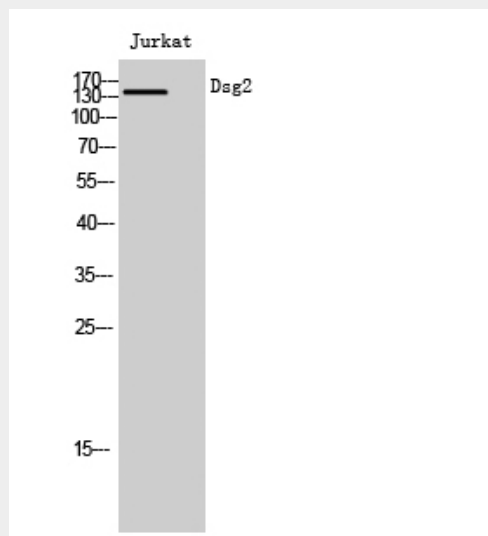
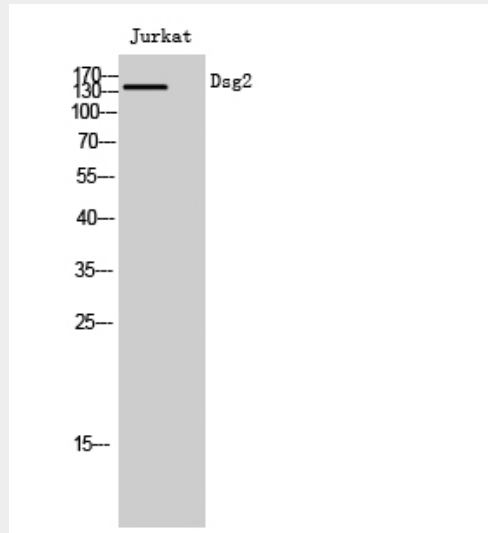
All of the tissues tested and carcinomas.

**Dsg2 Polyclonal Antibody - Protocols**

Provided below are standard protocols that you may find useful for product applications.

- [Western Blot](#)
- [Blocking Peptides](#)
- [Dot Blot](#)
- [Immunohistochemistry](#)
- [Immunofluorescence](#)
- [Immunoprecipitation](#)
- [Flow Cytometry](#)
- [Cell Culture](#)

### Dsg2 Polyclonal Antibody - Images



### Dsg2 Polyclonal Antibody - Background

Component of intercellular desmosome junctions. Involved in the interaction of plaque proteins and intermediate filaments mediating cell-cell adhesion.