

**DRS-1 Polyclonal Antibody**  
Catalog # AP69598**Specification****DRS-1 Polyclonal Antibody - Product Information**

Application	<b>WB</b>
Primary Accession	<a href="#">O75521</a>
Reactivity	<b>Human</b>
Host	<b>Rabbit</b>
Clonality	<b>Polyclonal</b>

**DRS-1 Polyclonal Antibody - Additional Information****Gene ID** 10455**Other Names**

ECI2; DRS1; HCA88; PECl; Enoyl-CoA delta isomerase 2; mitochondrial; DRS-1; Delta(3), delta(2)-enoyl-CoA isomerase; D3, D2-enoyl-CoA isomerase; Diazepam-binding inhibitor-related protein 1; DBI-related protein 1; Dodecenoyl-CoA isomerase; Hep

**Dilution**

WB~~Western Blot: 1/500 - 1/2000. Immunohistochemistry: 1/100 - 1/300. ELISA: 1/20000. Not yet tested in other applications.

**Format**

Liquid in PBS containing 50% glycerol, 0.5% BSA and 0.09% (W/V) sodium azide.

**Storage Conditions**

-20°C

**DRS-1 Polyclonal Antibody - Protein Information****Name** ECI2**Synonyms** DRS1, HCA88, PECl {ECO:0000303|PubMed:10**Function**

Able to isomerize both 3-cis and 3-trans double bonds into the 2-trans form in a range of enoyl-CoA species. Has a preference for 3-trans substrates.

**Cellular Location**

[Isoform 1]: Mitochondrion {ECO:0000250|UniProtKB:Q5XIC0}

**Tissue Location**

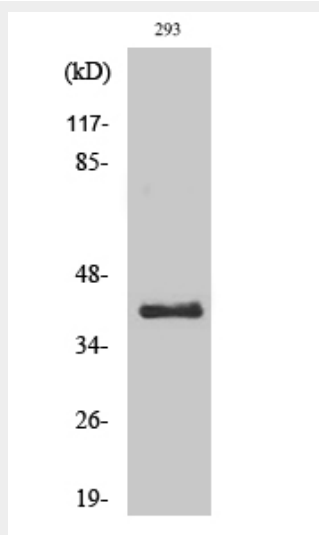
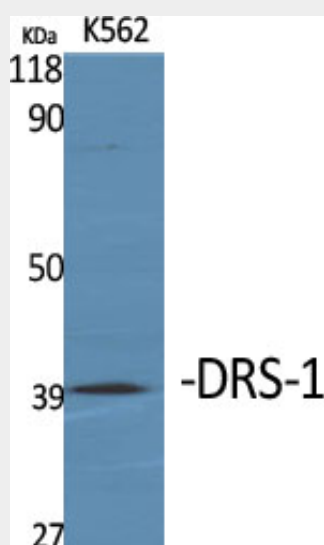
Abundant in heart, skeletal muscle and liver. Expressed in CD34(+) T-cells and CD34(+) bone marrow cells

## DRS-1 Polyclonal Antibody - Protocols

Provided below are standard protocols that you may find useful for product applications.

- [Western Blot](#)
- [Blocking Peptides](#)
- [Dot Blot](#)
- [Immunohistochemistry](#)
- [Immunofluorescence](#)
- [Immunoprecipitation](#)
- [Flow Cytometry](#)
- [Cell Culture](#)

## DRS-1 Polyclonal Antibody - Images



## DRS-1 Polyclonal Antibody - Background

Able to isomerize both 3-cis and 3-trans double bonds into the 2-trans form in a range of

enoyl-CoA species. Has a preference for 3-trans substrates (By similarity).