

Dok-3 Polyclonal Antibody
Catalog # AP69580**Specification**

Dok-3 Polyclonal Antibody - Product Information

Application	WB
Primary Accession	Q7L591
Reactivity	Human, Mouse
Host	Rabbit
Clonality	Polyclonal

Dok-3 Polyclonal Antibody - Additional Information**Gene ID** 79930**Other Names**

DOK3; Docking protein 3; Downstream of tyrosine kinase 3

Dilution

WB~Western Blot: 1/500 - 1/2000. Immunohistochemistry: 1/100 - 1/300. Immunofluorescence: 1/200 - 1/1000. ELISA: 1/20000. Not yet tested in other applications.

Format

Liquid in PBS containing 50% glycerol, 0.5% BSA and 0.09% (W/V) sodium azide.

Storage Conditions

-20°C

Dok-3 Polyclonal Antibody - Protein Information**Name** DOK3**Function**

DOK proteins are enzymatically inert adaptor or scaffolding proteins. They provide a docking platform for the assembly of multimolecular signaling complexes. DOK3 is a negative regulator of JNK signaling in B-cells through interaction with INPP5D/SHIP1. May modulate ABL1 function (By similarity).

Cellular Location

Cytoplasm. Cell membrane; Peripheral membrane protein; Cytoplasmic side

Tissue Location

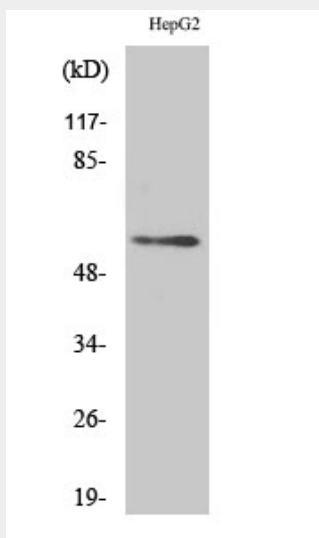
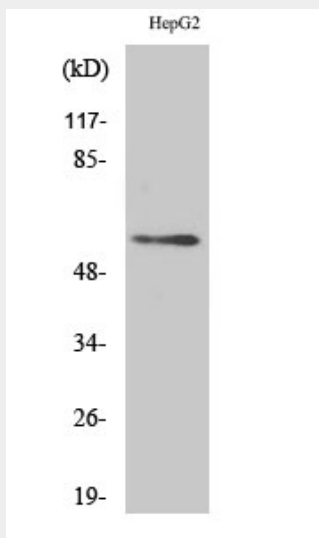
Expressed in spleen..

Dok-3 Polyclonal Antibody - Protocols

Provided below are standard protocols that you may find useful for product applications.

- [Western Blot](#)
- [Blocking Peptides](#)
- [Dot Blot](#)
- [Immunohistochemistry](#)
- [Immunofluorescence](#)
- [Immunoprecipitation](#)
- [Flow Cytometry](#)
- [Cell Culture](#)

Dok-3 Polyclonal Antibody - Images



Dok-3 Polyclonal Antibody - Background

DOK proteins are enzymatically inert adaptor or scaffolding proteins. They provide a docking platform for the assembly of multimolecular signaling complexes. DOK3 is a negative regulator of JNK signaling in B-cells through interaction with INPP5D/SHIP1. May modulate ABL1 function (By

similarity).