

DMGDH Polyclonal Antibody
Catalog # AP69545**Specification**

DMGDH Polyclonal Antibody - Product Information

Application	WB
Primary Accession	Q9UI17
Reactivity	Human
Host	Rabbit
Clonality	Polyclonal

DMGDH Polyclonal Antibody - Additional Information**Gene ID** 29958**Other Names**

DMGDH; Dimethylglycine dehydrogenase; mitochondrial; ME2GLYDH

Dilution

WB~~Western Blot: 1/500 - 1/2000. Immunohistochemistry: 1/100 - 1/300. ELISA: 1/20000. Not yet tested in other applications.

Format

Liquid in PBS containing 50% glycerol, 0.5% BSA and 0.09% (W/V) sodium azide.

Storage Conditions

-20°C

DMGDH Polyclonal Antibody - Protein Information**Name** DMGDH**Function**

Catalyzes the demethylation of N,N-dimethylglycine to sarcosine. Also has activity with sarcosine in vitro.

Cellular Location

Mitochondrion.

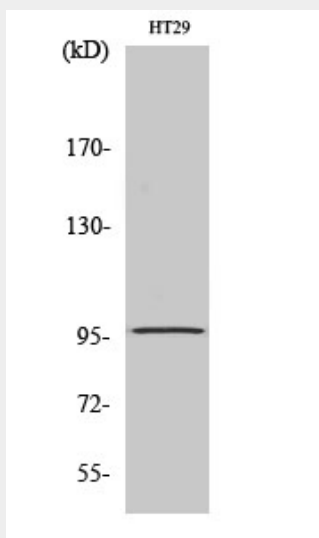
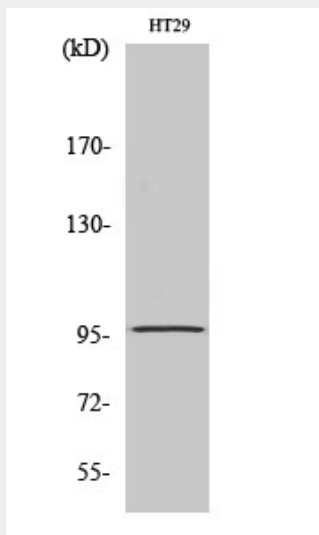
DMGDH Polyclonal Antibody - Protocols

Provided below are standard protocols that you may find useful for product applications.

- [Western Blot](#)
- [Blocking Peptides](#)
- [Dot Blot](#)

- [Immunohistochemistry](#)
- [Immunofluorescence](#)
- [Immunoprecipitation](#)
- [Flow Cytometry](#)
- [Cell Culture](#)

DMGDH Polyclonal Antibody - Images



DMGDH Polyclonal Antibody - Background

Catalyzes the demethylation of N,N-dimethylglycine to sarcosine. Also has activity with sarcosine in vitro.