

Di-Ras1 Polyclonal Antibody
Catalog # AP69536**Specification**

Di-Ras1 Polyclonal Antibody - Product Information

Application	WB
Primary Accession	O95057
Reactivity	Human
Host	Rabbit
Clonality	Polyclonal

Di-Ras1 Polyclonal Antibody - Additional Information**Gene ID** 148252**Other Names**

DIRAS1; GBTS1; RIG; GTP-binding protein Di-Ras1; Distinct subgroup of the Ras family member 1; Ras-related inhibitor of cell growth; Rig; Small GTP-binding tumor suppressor 1

Dilution

WB~~Western Blot: 1/500 - 1/2000. Immunohistochemistry: 1/100 - 1/300. Immunofluorescence: 1/200 - 1/1000. ELISA: 1/20000. Not yet tested in other applications.

Format

Liquid in PBS containing 50% glycerol, 0.5% BSA and 0.09% (W/V) sodium azide.

Storage Conditions

-20°C

Di-Ras1 Polyclonal Antibody - Protein Information**Name** DIRAS1**Synonyms** GBTS1, RIG**Function**

Displays low GTPase activity and exists predominantly in the GTP-bound form.

Cellular Location

Cell membrane; Lipid-anchor; Cytoplasmic side

Tissue Location

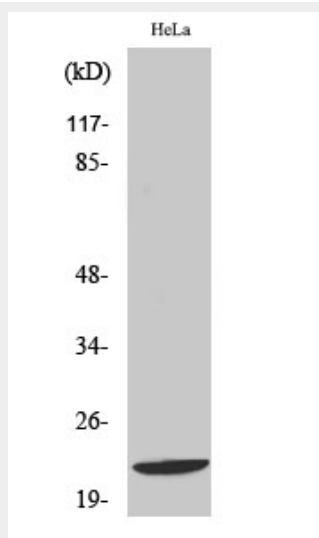
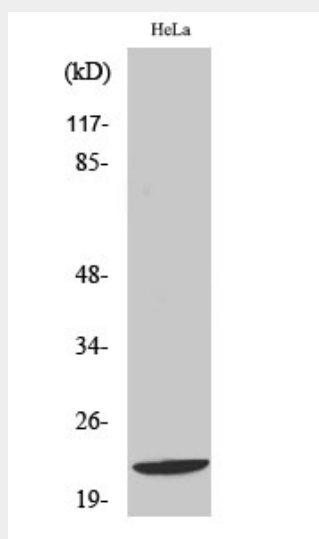
Highly expressed in heart and brain.

Di-Ras1 Polyclonal Antibody - Protocols

Provided below are standard protocols that you may find useful for product applications.

- [Western Blot](#)
- [Blocking Peptides](#)
- [Dot Blot](#)
- [Immunohistochemistry](#)
- [Immunofluorescence](#)
- [Immunoprecipitation](#)
- [Flow Cytometry](#)
- [Cell Culture](#)

Di-Ras1 Polyclonal Antibody - Images



Di-Ras1 Polyclonal Antibody - Background

Displays low GTPase activity and exists predominantly in the GTP-bound form.