

Dio-1 Polyclonal Antibody
Catalog # AP69534**Specification****Dio-1 Polyclonal Antibody - Product Information**

Application	WB
Primary Accession	Q9BTC0
Reactivity	Human, Mouse
Host	Rabbit
Clonality	Polyclonal

Dio-1 Polyclonal Antibody - Additional Information**Gene ID** 11083**Other Names**DIDO1; C20orf158; DATF1; KIAA0333; Death-inducer obliterator 1; DIO-1; hDido1;
Death-associated transcription factor 1; DATF-1**Dilution**

WB~~Western Blot: 1/500 - 1/2000. Immunohistochemistry: 1/100 - 1/300. ELISA: 1/10000. Not yet tested in other applications.

Format

Liquid in PBS containing 50% glycerol, 0.5% BSA and 0.09% (W/V) sodium azide.

Storage Conditions

-20°C

Dio-1 Polyclonal Antibody - Protein Information**Name** DIDO1**Synonyms** C20orf158, DATF1, KIAA0333**Function**

Putative transcription factor, weakly pro-apoptotic when overexpressed (By similarity). Tumor suppressor. Required for early embryonic stem cell development.

Cellular Location

Cytoplasm. Nucleus {ECO:0000255|PROSITE-ProRule:PRU00651}. Cytoplasm, cytoskeleton, spindle. Note=Translocates to the nucleus after pro-apoptotic stimuli (By similarity). Translocates to the mitotic spindle upon loss of interaction with H3K4me3 during early mitosis.

Tissue Location

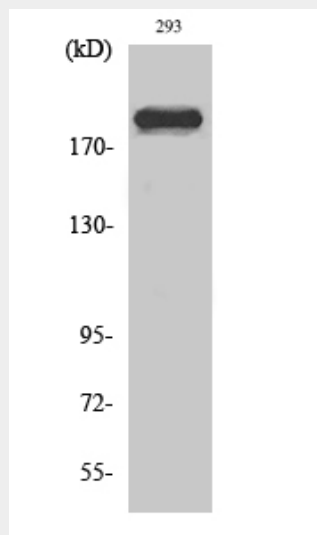
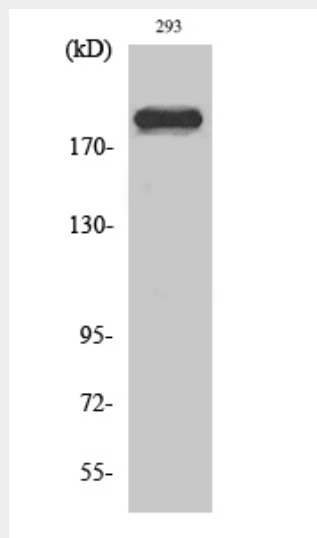
Ubiquitous.

Dio-1 Polyclonal Antibody - Protocols

Provided below are standard protocols that you may find useful for product applications.

- [Western Blot](#)
- [Blocking Peptides](#)
- [Dot Blot](#)
- [Immunohistochemistry](#)
- [Immunofluorescence](#)
- [Immunoprecipitation](#)
- [Flow Cytometry](#)
- [Cell Culture](#)

Dio-1 Polyclonal Antibody - Images



Dio-1 Polyclonal Antibody - Background

Putative transcription factor, weakly pro-apoptotic when overexpressed (By similarity). Tumor

suppressor. Required for early embryonic stem cell development.