

**D-GPCR Polyclonal Antibody**  
Catalog # AP69523**Specification**

---

**D-GPCR Polyclonal Antibody - Product Information**

Application	WB
Primary Accession	<a href="#">Q8TCB6</a>
Reactivity	Human
Host	Rabbit
Clonality	Polyclonal

**D-GPCR Polyclonal Antibody - Additional Information****Gene ID** 143503**Other Names**

OR51E1; GPR164; OR51E1P; OR52A3P; POGR; PSGR2; Olfactory receptor 51E1; D-GPCR; G-protein coupled receptor 164; Olfactory receptor 52A3; Prostate-overexpressed G protein-coupled receptor; Prostate-specific G protein-coupled receptor 2

**Dilution**

WB~~Western Blot: 1/500 - 1/2000. Immunofluorescence: 1/200 - 1/1000. ELISA: 1/20000. Not yet tested in other applications.

**Format**

Liquid in PBS containing 50% glycerol, 0.5% BSA and 0.09% (W/V) sodium azide.

**Storage Conditions**

-20°C

**D-GPCR Polyclonal Antibody - Protein Information****Name** OR51E1**Synonyms** GPR164, OR51E1P, OR52A3P, POGR, PSGR2**Function**

Odorant receptor.

**Cellular Location**

Cell membrane; Multi-pass membrane protein

**Tissue Location**

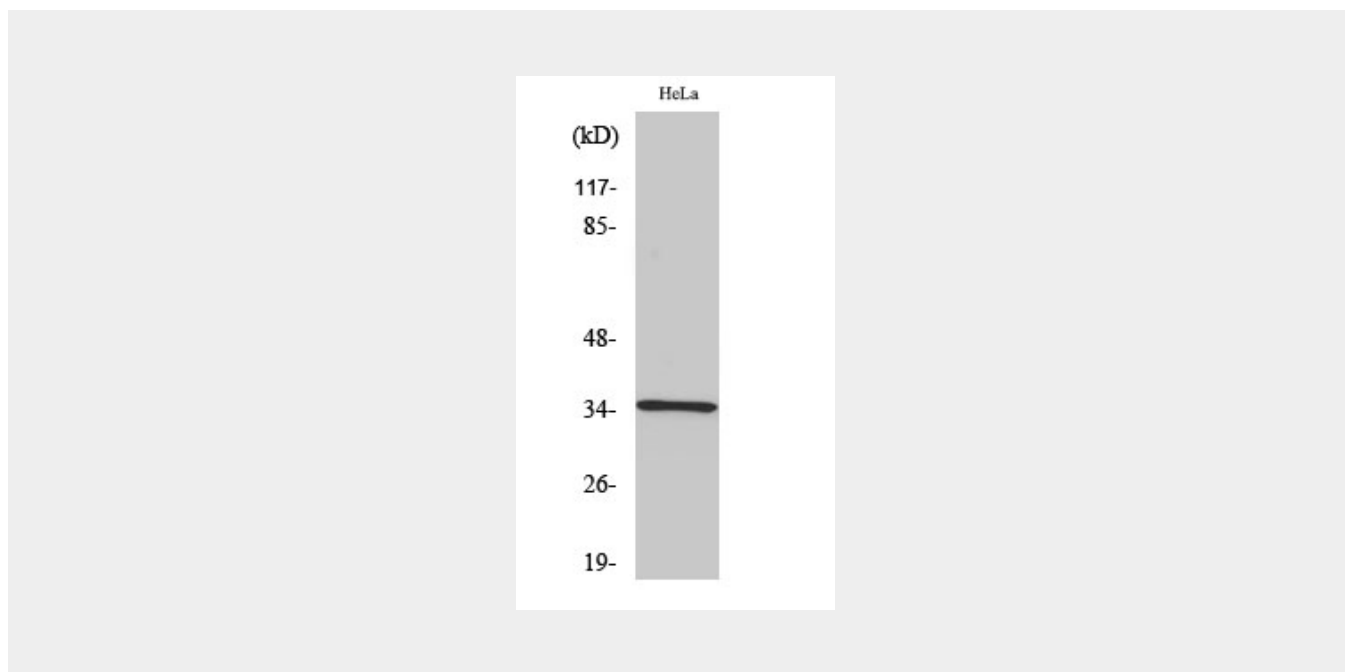
Highly expressed in prostate. Very low levels may be detected in some other tissues, such as placenta, skeletal muscle, heart, ovary and testis. Up-regulated in prostate cancers

## D-GPCR Polyclonal Antibody - Protocols

Provided below are standard protocols that you may find useful for product applications.

- [Western Blot](#)
- [Blocking Peptides](#)
- [Dot Blot](#)
- [Immunohistochemistry](#)
- [Immunofluorescence](#)
- [Immunoprecipitation](#)
- [Flow Cytometry](#)
- [Cell Culture](#)

## D-GPCR Polyclonal Antibody - Images



## D-GPCR Polyclonal Antibody - Background

Odorant receptor.