

**DEF-3 Polyclonal Antibody**  
Catalog # AP69504**Specification**

---

**DEF-3 Polyclonal Antibody - Product Information**

Application	WB
Primary Accession	<a href="#">P78332</a>
Reactivity	Human, Mouse
Host	Rabbit
Clonality	Polyclonal

**DEF-3 Polyclonal Antibody - Additional Information****Gene ID** 10180**Other Names**

RBM6; DEF3; RNA-binding protein 6; Lung cancer antigen NY-LU-12; Protein G16; RNA-binding motif protein 6; RNA-binding protein DEF-3

**Dilution**

WB~~Western Blot: 1/500 - 1/2000. Immunohistochemistry: 1/100 - 1/300. Immunofluorescence: 1/200 - 1/1000. ELISA: 1/20000. Not yet tested in other applications.

**Format**

Liquid in PBS containing 50% glycerol, 0.5% BSA and 0.09% (W/V) sodium azide.

**Storage Conditions**

-20°C

**DEF-3 Polyclonal Antibody - Protein Information****Name** RBM6**Synonyms** DEF3**Function**

Specifically binds poly(G) RNA homopolymers in vitro.

**Cellular Location**

Nucleus.

**Tissue Location**

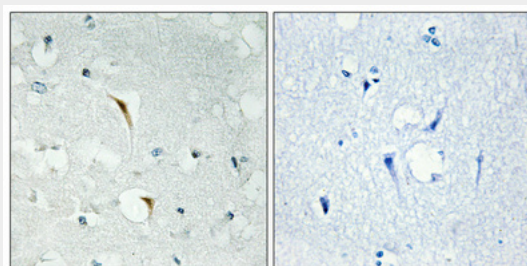
Ubiquitous in adults.

**DEF-3 Polyclonal Antibody - Protocols**

Provided below are standard protocols that you may find useful for product applications.

- [Western Blot](#)
- [Blocking Peptides](#)
- [Dot Blot](#)
- [Immunohistochemistry](#)
- [Immunofluorescence](#)
- [Immunoprecipitation](#)
- [Flow Cytometry](#)
- [Cell Culture](#)

#### **DEF-3 Polyclonal Antibody - Images**



#### **DEF-3 Polyclonal Antibody - Background**

Specifically binds poly(G) RNA homopolymers in vitro.