

DC-LAMP Polyclonal Antibody
Catalog # AP69485**Specification****DC-LAMP Polyclonal Antibody - Product Information**

Application	IHC
Primary Accession	O9UQV4
Reactivity	Human
Host	Rabbit
Clonality	Polyclonal

DC-LAMP Polyclonal Antibody - Additional Information**Gene ID** 27074**Other Names**

LAMP3; DCLAMP; TSC403; Lysosome-associated membrane glycoprotein 3; LAMP-3; Lysosomal-associated membrane protein 3; DC-lysosome-associated membrane glycoprotein; DC LAMP; Protein TSC403; CD antigen CD208

Dilution

IHC~~Immunohistochemistry: 1/100 - 1/300. ELISA: 1/40000. Not yet tested in other applications.

Format

Liquid in PBS containing 50% glycerol, 0.5% BSA and 0.09% (W/V) sodium azide.

Storage Conditions

-20°C

DC-LAMP Polyclonal Antibody - Protein Information**Name** LAMP3**Synonyms** DCLAMP, TSC403**Function**

Lysosomal membrane glycoprotein which plays a role in the unfolded protein response (UPR) that contributes to protein degradation and cell survival during proteasomal dysfunction (PubMed: [25681212](http://www.uniprot.org/citations/25681212)). Plays a role in the process of fusion of the lysosome with the autophagosome, thereby modulating the autophagic process (PubMed: [24434718](http://www.uniprot.org/citations/24434718)). Promotes hepatocellular lipogenesis through activation of the PI3K/Akt pathway (PubMed: [29056532](http://www.uniprot.org/citations/29056532)). May also play a role in dendritic cell function and in adaptive immunity (PubMed: [9768752](http://www.uniprot.org/citations/9768752)).

Cellular Location

Cell surface. Lysosome membrane; Single-pass type I membrane protein. Cytoplasmic vesicle membrane; Single-pass type I membrane protein. Early endosome membrane; Single-pass type I membrane protein. Note=During dendritic cell maturation, detected on cytoplasmic vesicles (the MHC II compartment) that contain MHC II proteins, LAMP1, LAMP2 and LAMP3 (PubMed:9768752). Detected on lysosomes in mature dendritic cells (PubMed:9768752).

Tissue Location

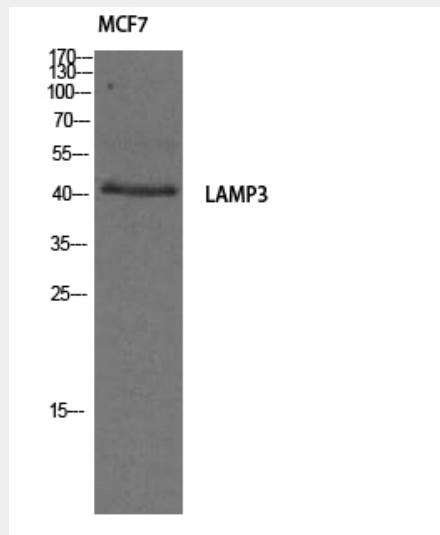
Detected in tonsil interdigitating dendritic cells, in spleen, lymph node, Peyer's patches in the small intestine, in thymus medulla and in B-cells (at protein level). Expressed in lymphoid organs and dendritic cells. Expressed in lung. Up-regulated in carcinomas of the esophagus, colon, rectum, ureter, stomach, breast, fallopian tube, thyroid and parotid tissues

DC-LAMP Polyclonal Antibody - Protocols

Provided below are standard protocols that you may find useful for product applications.

- [Western Blot](#)
- [Blocking Peptides](#)
- [Dot Blot](#)
- [Immunohistochemistry](#)
- [Immunofluorescence](#)
- [Immunoprecipitation](#)
- [Flow Cytometry](#)
- [Cell Culture](#)

DC-LAMP Polyclonal Antibody - Images



DC-LAMP Polyclonal Antibody - Background

May play a role in dendritic cell function and in adaptive immunity.