

DBH Polyclonal Antibody
Catalog # AP69479**Specification**

DBH Polyclonal Antibody - Product Information

Application	WB
Primary Accession	P09172
Reactivity	Human
Host	Rabbit
Clonality	Polyclonal

DBH Polyclonal Antibody - Additional Information**Gene ID** 1621**Other Names**

DBH; Dopamine beta-hydroxylase; Dopamine beta-monoxygenase

Dilution

WB~~Western Blot: 1/500 - 1/2000. ELISA: 1/10000. Not yet tested in other applications.

Format

Liquid in PBS containing 50% glycerol, 0.5% BSA and 0.09% (W/V) sodium azide.

Storage Conditions

-20°C

DBH Polyclonal Antibody - Protein Information**Name** DBH**Function**

Catalyzes the hydroxylation of dopamine to noradrenaline (also known as norepinephrine), and is thus vital for regulation of these neurotransmitters.

Cellular Location

[Soluble dopamine beta-hydroxylase]: Cytoplasmic vesicle, secretory vesicle lumen Cytoplasmic vesicle, secretory vesicle, chromaffin granule lumen. Secreted

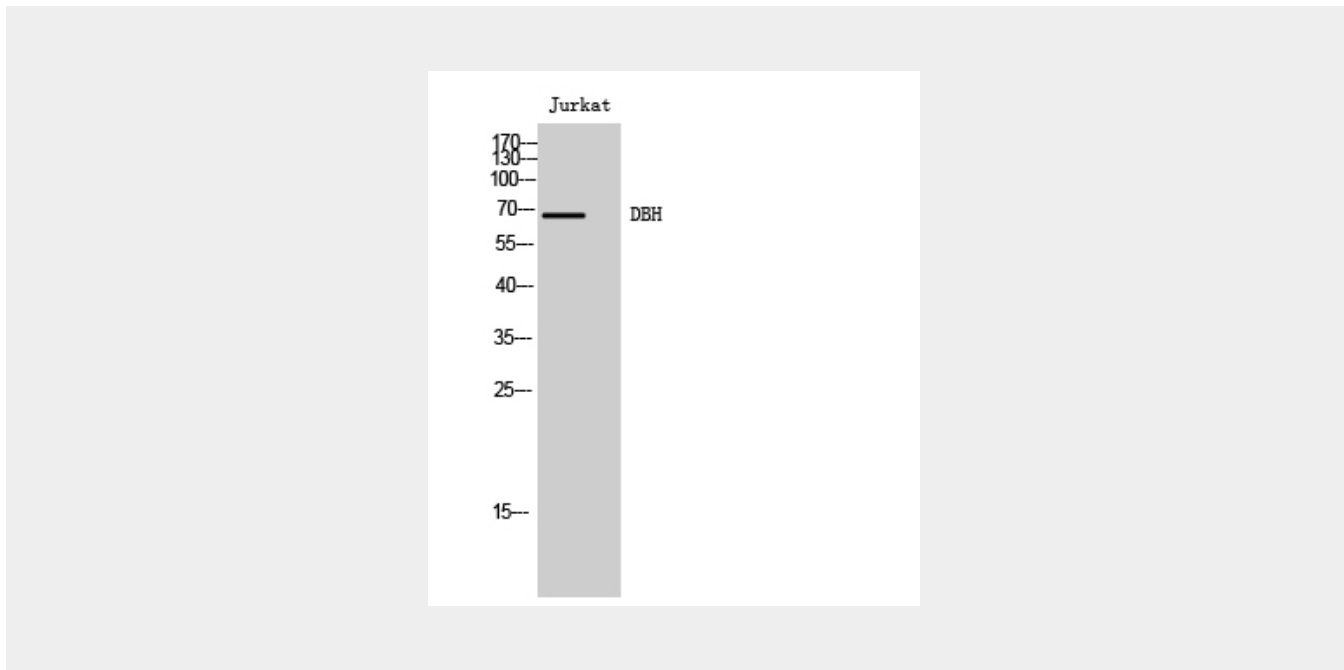
DBH Polyclonal Antibody - Protocols

Provided below are standard protocols that you may find useful for product applications.

- [Western Blot](#)
- [Blocking Peptides](#)
- [Dot Blot](#)

- [Immunohistochemistry](#)
- [Immunofluorescence](#)
- [Immunoprecipitation](#)
- [Flow Cytometry](#)
- [Cell Culture](#)

DBH Polyclonal Antibody - Images



DBH Polyclonal Antibody - Background

Conversion of dopamine to noradrenaline.