

Dab1 Polyclonal Antibody
Catalog # AP69465**Specification**

Dab1 Polyclonal Antibody - Product Information

Application	WB
Primary Accession	O75553
Reactivity	Human, Mouse, Rat
Host	Rabbit
Clonality	Polyclonal

Dab1 Polyclonal Antibody - Additional Information**Gene ID** 1600**Other Names**

DAB1; Disabled homolog 1

Dilution

WB~~Western Blot: 1/500 - 1/2000. Immunofluorescence: 1/200 - 1/1000. ELISA: 1/20000. Not yet tested in other applications.

Format

Liquid in PBS containing 50% glycerol, 0.5% BSA and 0.09% (W/V) sodium azide.

Storage Conditions

-20°C

Dab1 Polyclonal Antibody - Protein Information**Name** DAB1**Function**

Signaling adapter of the reelin-mediated signaling pathway, which regulates the migration and differentiation of postmitotic neurons during brain development. Mediates intracellular transduction of Reelin signaling following reelin (RELN)-binding to its receptor: acts by docking proteins through its phosphotyrosine residues and PID domain.

Cellular Location

Cytoplasm {ECO:0000250|UniProtKB:P97318}.

Tissue Location

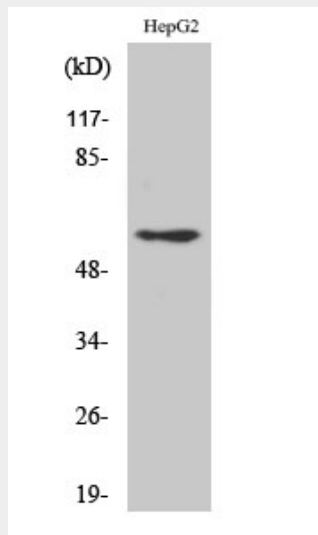
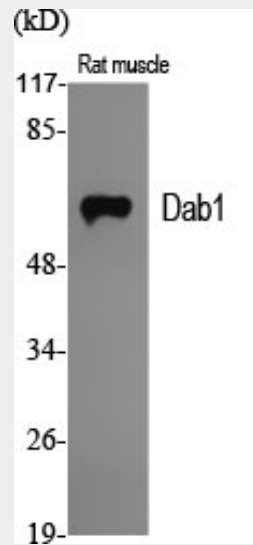
Mainly expressed in brain.

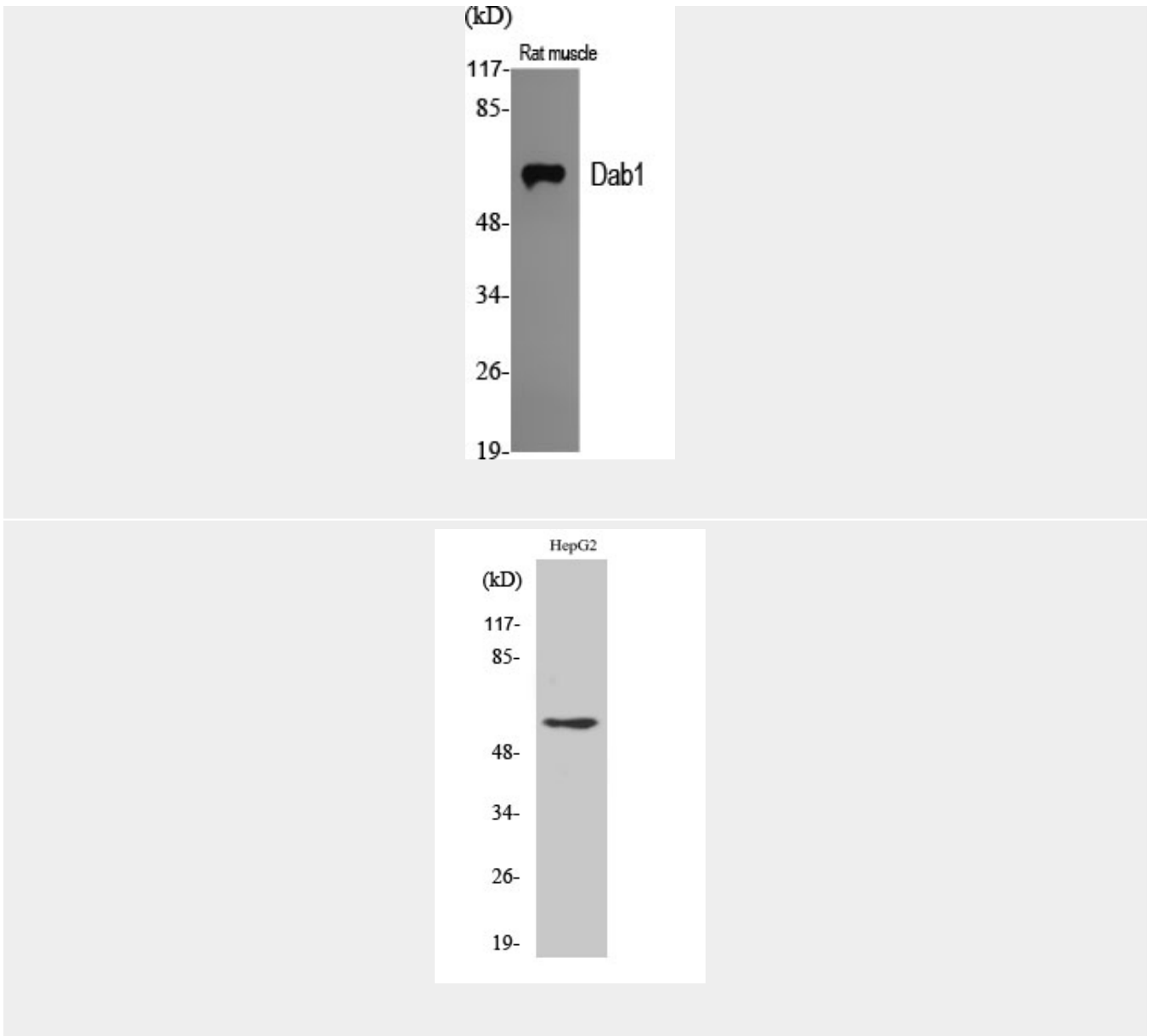
Dab1 Polyclonal Antibody - Protocols

Provided below are standard protocols that you may find useful for product applications.

- [Western Blot](#)
- [Blocking Peptides](#)
- [Dot Blot](#)
- [Immunohistochemistry](#)
- [Immunofluorescence](#)
- [Immunoprecipitation](#)
- [Flow Cytometry](#)
- [Cell Culture](#)

Dab1 Polyclonal Antibody - Images





Dab1 Polyclonal Antibody - Background

Adapter molecule functioning in neural development. May regulate SIAH1 activity.