

**Dab1 Polyclonal Antibody**  
Catalog # AP69464**Specification**

---

**Dab1 Polyclonal Antibody - Product Information**

|                   |                        |
|-------------------|------------------------|
| Application       | WB                     |
| Primary Accession | <a href="#">O75553</a> |
| Reactivity        | Human, Mouse, Rat      |
| Host              | Rabbit                 |
| Clonality         | Polyclonal             |

**Dab1 Polyclonal Antibody - Additional Information****Gene ID** 1600**Other Names**

DAB1; Disabled homolog 1

**Dilution**

WB~~Western Blot: 1/500 - 1/2000. Immunofluorescence: 1/200 - 1/1000. ELISA: 1/20000. Not yet tested in other applications.

**Format**

Liquid in PBS containing 50% glycerol, 0.5% BSA and 0.09% (W/V) sodium azide.

**Storage Conditions**

-20°C

**Dab1 Polyclonal Antibody - Protein Information****Name** DAB1**Function**

Signaling adapter of the reelin-mediated signaling pathway, which regulates the migration and differentiation of postmitotic neurons during brain development. Mediates intracellular transduction of Reelin signaling following reelin (RELN)-binding to its receptor: acts by docking proteins through its phosphotyrosine residues and PID domain.

**Cellular Location**

Cytoplasm {ECO:0000250|UniProtKB:P97318}.

**Tissue Location**

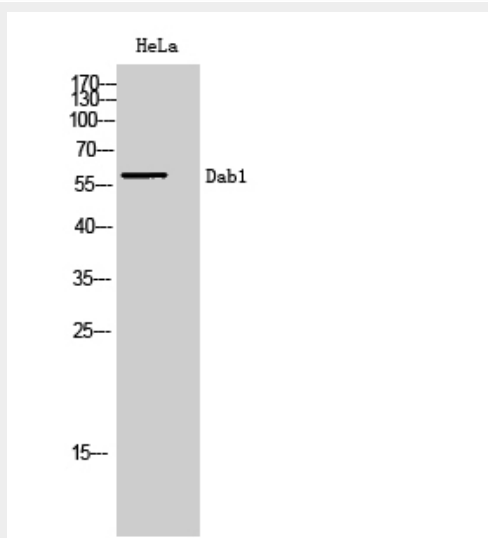
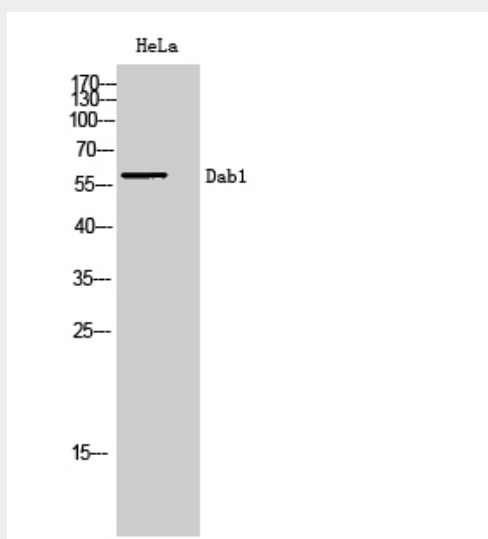
Mainly expressed in brain.

**Dab1 Polyclonal Antibody - Protocols**

Provided below are standard protocols that you may find useful for product applications.

- [Western Blot](#)
- [Blocking Peptides](#)
- [Dot Blot](#)
- [Immunohistochemistry](#)
- [Immunofluorescence](#)
- [Immunoprecipitation](#)
- [Flow Cytometry](#)
- [Cell Culture](#)

### Dab1 Polyclonal Antibody - Images



### Dab1 Polyclonal Antibody - Background

Adapter molecule functioning in neural development. May regulate SIAH1 activity.