

**Cytokeratin 8 Polyclonal Antibody**  
Catalog # AP69458**Specification**

---

**Cytokeratin 8 Polyclonal Antibody - Product Information**

Application	WB
Primary Accession	<a href="#">P05787</a>
Reactivity	Human, Mouse, Monkey
Host	Rabbit
Clonality	Polyclonal

**Cytokeratin 8 Polyclonal Antibody - Additional Information****Gene ID** 3856**Other Names**

KRT8; CYK8; Keratin; type II cytoskeletal 8; Cytokeratin-8; CK-8; Keratin-8; K8; Type-II keratin Kb8

**Dilution**

WB~~Western Blot: 1/500 - 1/2000. Immunohistochemistry: 1/100 - 1/300. Immunofluorescence: 1/200 - 1/1000. ELISA: 1/40000. Not yet tested in other applications.

**Format**

Liquid in PBS containing 50% glycerol, 0.5% BSA and 0.09% (W/V) sodium azide.

**Storage Conditions**

-20°C

**Cytokeratin 8 Polyclonal Antibody - Protein Information****Name** KRT8**Synonyms** CYK8**Function**

Together with KRT19, helps to link the contractile apparatus to dystrophin at the costameres of striated muscle.

**Cellular Location**

Cytoplasm. Nucleus, nucleoplasm {ECO:0000250|UniProtKB:Q10758}. Nucleus matrix {ECO:0000250|UniProtKB:Q10758}

**Tissue Location**

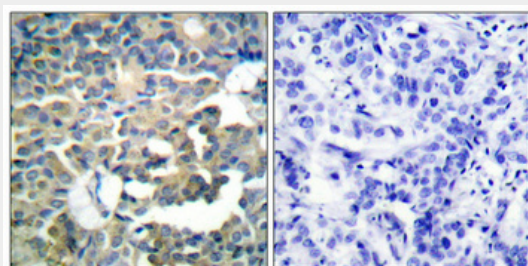
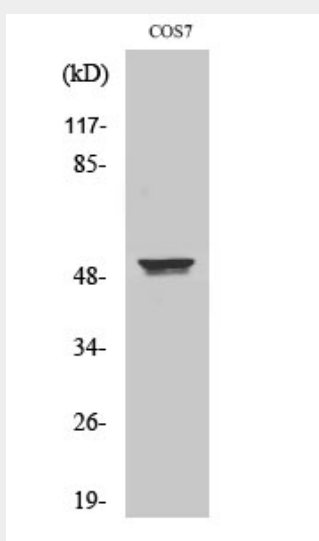
Observed in muscle fibers accumulating in the costameres of myoplasm at the sarcolemma membrane in structures that contain dystrophin and spectrin. Expressed in gingival mucosa and hard palate of the oral cavity.

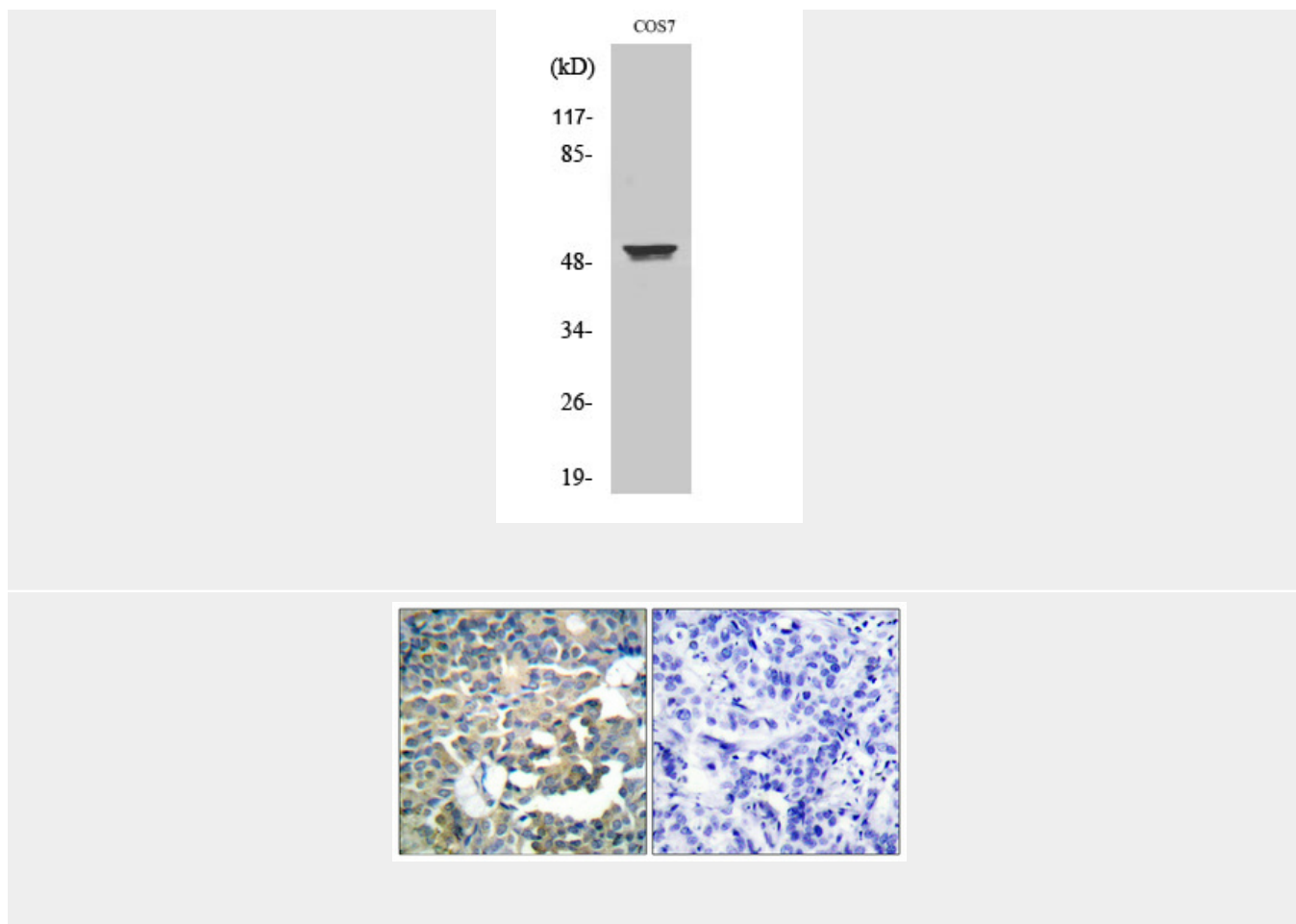
## Cytokeratin 8 Polyclonal Antibody - Protocols

Provided below are standard protocols that you may find useful for product applications.

- [Western Blot](#)
- [Blocking Peptides](#)
- [Dot Blot](#)
- [Immunohistochemistry](#)
- [Immunofluorescence](#)
- [Immunoprecipitation](#)
- [Flow Cytometry](#)
- [Cell Culture](#)

## Cytokeratin 8 Polyclonal Antibody - Images





### **Cytokeratin 8 Polyclonal Antibody - Background**

Together with KRT19, helps to link the contractile apparatus to dystrophin at the costameres of striated muscle.