

**Cytokeratin 7 Polyclonal Antibody**  
Catalog # AP69455**Specification**

---

**Cytokeratin 7 Polyclonal Antibody - Product Information**

Application	WB
Primary Accession	<a href="#">P08729</a>
Reactivity	Human
Host	Rabbit
Clonality	Polyclonal

**Cytokeratin 7 Polyclonal Antibody - Additional Information****Gene ID** 3855**Other Names**

KRT7; SCL; Keratin; type II cytoskeletal 7; Cytokeratin-7; CK-7; Keratin-7; K7; Sarcolectin; Type-II keratin Kb7

**Dilution**

WB~~Western Blot: 1/500 - 1/2000. Immunohistochemistry: 1/100 - 1/300. Immunofluorescence: 1/200 - 1/1000. ELISA: 1/40000. Not yet tested in other applications.

**Format**

Liquid in PBS containing 50% glycerol, 0.5% BSA and 0.09% (W/V) sodium azide.

**Storage Conditions**

-20°C

**Cytokeratin 7 Polyclonal Antibody - Protein Information****Name** KRT7**Synonyms** SCL**Function**

Blocks interferon-dependent interphase and stimulates DNA synthesis in cells. Involved in the translational regulation of the human papillomavirus type 16 E7 mRNA (HPV16 E7).

**Cellular Location**

Cytoplasm.

**Tissue Location**

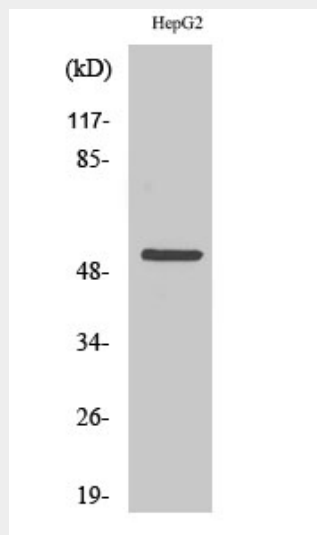
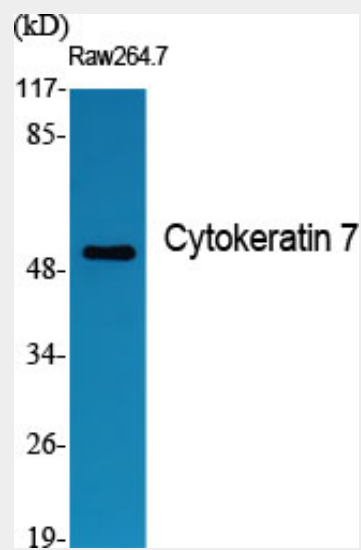
Expressed in cultured epidermal, bronchial and mesothelial cells but absent in colon, ectocervix and liver. Observed throughout the glandular cells in the junction between stomach and esophagus but is absent in the esophagus.

## Cytokeratin 7 Polyclonal Antibody - Protocols

Provided below are standard protocols that you may find useful for product applications.

- [Western Blot](#)
- [Blocking Peptides](#)
- [Dot Blot](#)
- [Immunohistochemistry](#)
- [Immunofluorescence](#)
- [Immunoprecipitation](#)
- [Flow Cytometry](#)
- [Cell Culture](#)

## Cytokeratin 7 Polyclonal Antibody - Images



## Cytokeratin 7 Polyclonal Antibody - Background

Blocks interferon-dependent interphase and stimulates DNA synthesis in cells. Involved in the

translational regulation of the human papillomavirus type 16 E7 mRNA (HPV16 E7).