

**Cytokeratin 16 Polyclonal Antibody**  
Catalog # AP69447**Specification**

---

**Cytokeratin 16 Polyclonal Antibody - Product Information**

Application	WB
Primary Accession	<a href="#">P08779</a>
Reactivity	Human, Mouse, Rat
Host	Rabbit
Clonality	Polyclonal

**Cytokeratin 16 Polyclonal Antibody - Additional Information****Gene ID** 3868**Other Names**

KRT16; KRT16A; Keratin; type I cytoskeletal 16; Cytokeratin-16; CK-16; Keratin-16; K16

**Dilution**

WB~~Western Blot: 1/500 - 1/2000. Immunohistochemistry: 1/100 - 1/300. ELISA: 1/10000. Not yet tested in other applications.

**Format**

Liquid in PBS containing 50% glycerol, 0.5% BSA and 0.09% (W/V) sodium azide.

**Storage Conditions**

-20°C

**Cytokeratin 16 Polyclonal Antibody - Protein Information****Name** KRT16**Synonyms** KRT16A**Function**

Epidermis-specific type I keratin that plays a key role in skin. Acts as a regulator of innate immunity in response to skin barrier breach: required for some inflammatory checkpoint for the skin barrier maintenance.

**Tissue Location**

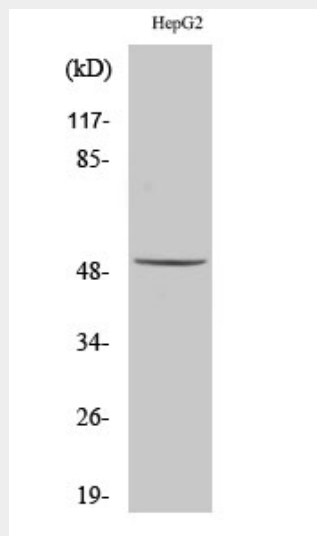
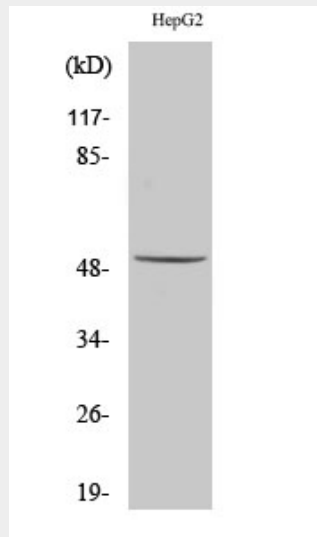
Expressed in the corneal epithelium (at protein level).

**Cytokeratin 16 Polyclonal Antibody - Protocols**

Provided below are standard protocols that you may find useful for product applications.

- [Western Blot](#)
- [Blocking Peptides](#)
- [Dot Blot](#)
- [Immunohistochemistry](#)
- [Immunofluorescence](#)
- [Immunoprecipitation](#)
- [Flow Cytometry](#)
- [Cell Culture](#)

### Cytokeratin 16 Polyclonal Antibody - Images



### Cytokeratin 16 Polyclonal Antibody - Background

Epidermis-specific type I keratin that plays a key role in skin. Acts as a regulator of innate immunity in response to skin barrier breach: required for some inflammatory checkpoint for the skin barrier maintenance.