

Cytokeratin 10 Polyclonal Antibody
Catalog # AP69442**Specification**

Cytokeratin 10 Polyclonal Antibody - Product Information

Application	WB
Primary Accession	P13645
Reactivity	Human, Mouse, Rat
Host	Rabbit
Clonality	Polyclonal

Cytokeratin 10 Polyclonal Antibody - Additional Information**Gene ID** 3858**Other Names**

KRT10; KPP; Keratin; type I cytoskeletal 10; Cytokeratin-10; CK-10; Keratin-10; K10

Dilution

WB~~Western Blot: 1/500 - 1/2000. Immunohistochemistry: 1/100 - 1/300. Immunofluorescence: 1/200 - 1/1000. ELISA: 1/20000. Not yet tested in other applications.

Format

Liquid in PBS containing 50% glycerol, 0.5% BSA and 0.09% (W/V) sodium azide.

Storage Conditions

-20°C

Cytokeratin 10 Polyclonal Antibody - Protein Information**Name** KRT10**Synonyms** KPP**Function**

Plays a role in the establishment of the epidermal barrier on plantar skin (By similarity). Involved in the maintenance of cell layer development and keratin filament bundles in suprabasal cells of the epithelium (By similarity).

Cellular Location

Secreted, extracellular space. Cell surface. Cytoplasm

Tissue Location

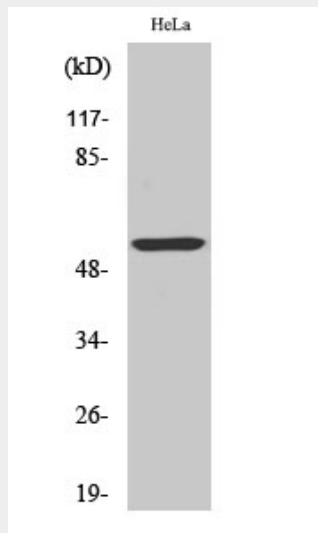
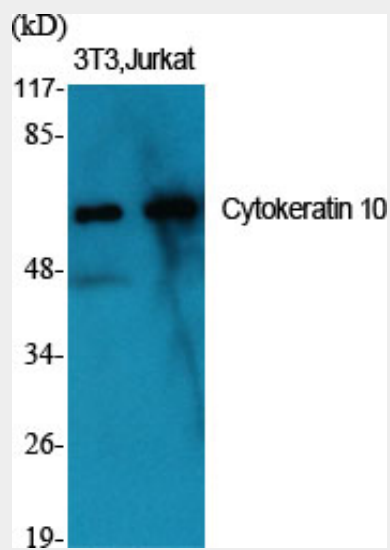
Seen in all suprabasal cell layers including stratum corneum. Expressed on the surface of lung cell lines (PubMed:19627498). Localized on the surface of desquamated nasal epithelial cells (at protein level) (PubMed:12427098)

Cytokeratin 10 Polyclonal Antibody - Protocols

Provided below are standard protocols that you may find useful for product applications.

- [Western Blot](#)
- [Blocking Peptides](#)
- [Dot Blot](#)
- [Immunohistochemistry](#)
- [Immunofluorescence](#)
- [Immunoprecipitation](#)
- [Flow Cytometry](#)
- [Cell Culture](#)

Cytokeratin 10 Polyclonal Antibody - Images



Cytokeratin 10 Polyclonal Antibody - Background

Plays a role in the establishment of the epidermal barrier on plantar skin.