

Cytochrome b5 Polyclonal Antibody
Catalog # AP69440**Specification**

Cytochrome b5 Polyclonal Antibody - Product Information

Application	WB
Primary Accession	P00167
Reactivity	Human, Mouse, Rat
Host	Rabbit
Clonality	Polyclonal

Cytochrome b5 Polyclonal Antibody - Additional Information**Gene ID** 1528**Other Names**

CYB5A; CYB5; Cytochrome b5; Mitochondrial cytochrome b5 type A; MCB5

Dilution

WB~~Western Blot: 1/500 - 1/2000. Immunohistochemistry: 1/100 - 1/300. Immunofluorescence: 1/200 - 1/1000. ELISA: 1/5000. Not yet tested in other applications.

Format

Liquid in PBS containing 50% glycerol, 0.5% BSA and 0.09% (W/V) sodium azide.

Storage Conditions

-20°C

Cytochrome b5 Polyclonal Antibody - Protein Information**Name** CYB5A**Synonyms** CYB5**Function**

Cytochrome b5 is a membrane-bound hemoprotein functioning as an electron carrier for several membrane-bound oxygenases.

Cellular Location

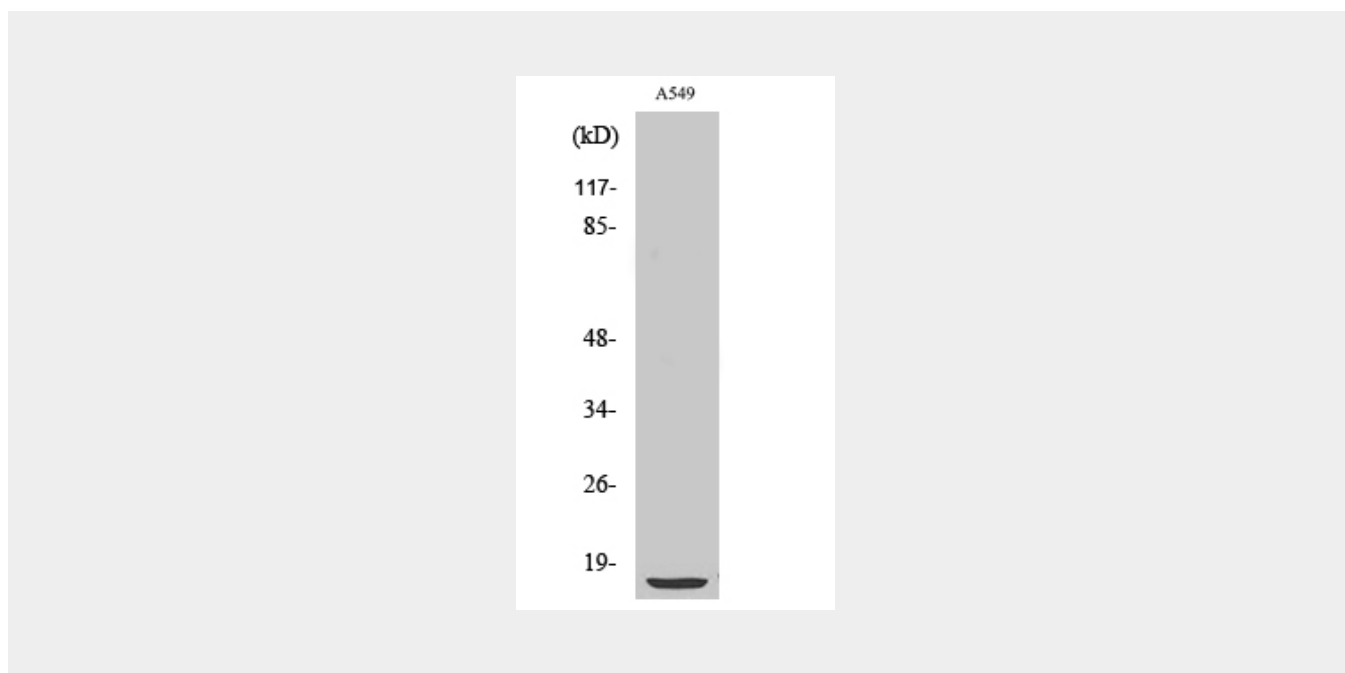
[Isoform 1]: Endoplasmic reticulum membrane; Single-pass membrane protein; Cytoplasmic side. Mitochondrial membrane; Single-pass membrane protein; Cytoplasmic side

Cytochrome b5 Polyclonal Antibody - Protocols

Provided below are standard protocols that you may find useful for product applications.

- [Western Blot](#)
- [Blocking Peptides](#)
- [Dot Blot](#)
- [Immunohistochemistry](#)
- [Immunofluorescence](#)
- [Immunoprecipitation](#)
- [Flow Cytometry](#)
- [Cell Culture](#)

Cytochrome b5 Polyclonal Antibody - Images



Cytochrome b5 Polyclonal Antibody - Background

Cytochrome b5 is a membrane bound hemoprotein which function as an electron carrier for several membrane bound oxygenases.