

Cystatin C Polyclonal Antibody
Catalog # AP69434**Specification**

Cystatin C Polyclonal Antibody - Product Information

Application	WB
Primary Accession	P01034
Reactivity	Human, Mouse, Rat, Monkey
Host	Rabbit
Clonality	Polyclonal

Cystatin C Polyclonal Antibody - Additional Information**Gene ID** 1471**Other Names**CST3; Cystatin-C; Cystatin-3; Gamma-trace; Neuroendocrine basic polypeptide;
Post-gamma-globulin**Dilution**

WB~~Western Blot: 1/500 - 1/2000. ELISA: 1/40000. Not yet tested in other applications.

Format

Liquid in PBS containing 50% glycerol, 0.5% BSA and 0.09% (W/V) sodium azide.

Storage Conditions

-20°C

Cystatin C Polyclonal Antibody - Protein Information**Name** CST3**Function**

As an inhibitor of cysteine proteinases, this protein is thought to serve an important physiological role as a local regulator of this enzyme activity.

Cellular Location

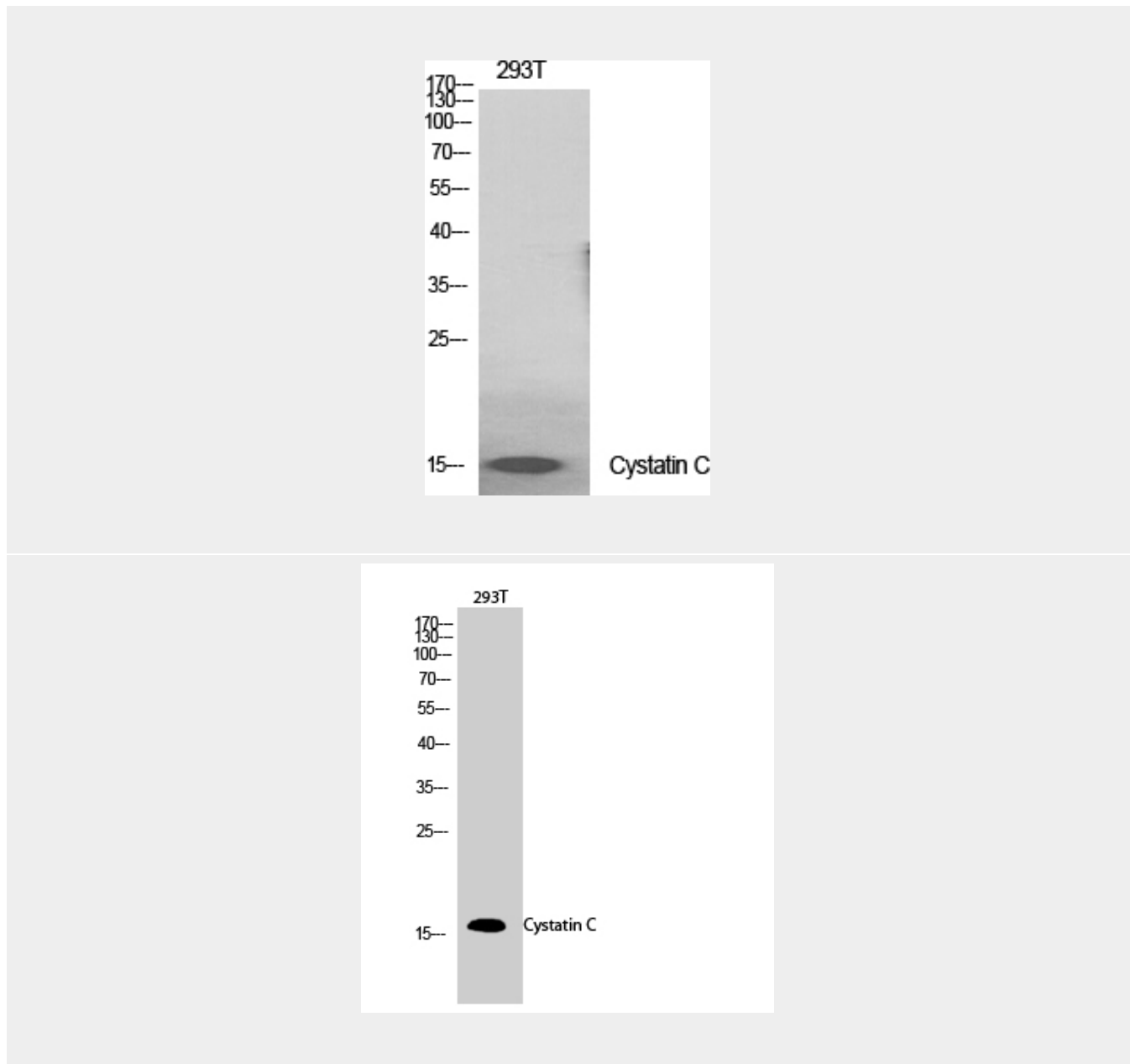
Secreted.

Tissue LocationExpressed in submandibular and sublingual saliva but not in parotid saliva (at protein level).
Expressed in various body fluids, such as the cerebrospinal fluid and plasma. Expressed in highest levels in the epididymis, vas deferens, brain, thymus, and ovary and the lowest in the submandibular gland**Cystatin C Polyclonal Antibody - Protocols**

Provided below are standard protocols that you may find useful for product applications.

- [Western Blot](#)
- [Blocking Peptides](#)
- [Dot Blot](#)
- [Immunohistochemistry](#)
- [Immunofluorescence](#)
- [Immunoprecipitation](#)
- [Flow Cytometry](#)
- [Cell Culture](#)

Cystatin C Polyclonal Antibody - Images



Cystatin C Polyclonal Antibody - Background

As an inhibitor of cysteine proteinases, this protein is thought to serve an important physiological role as a local regulator of this enzyme activity.