

Cystatin A Polyclonal Antibody
Catalog # AP69432**Specification**

Cystatin A Polyclonal Antibody - Product Information

Application	WB
Primary Accession	P01040
Reactivity	Human
Host	Rabbit
Clonality	Polyclonal

Cystatin A Polyclonal Antibody - Additional Information**Gene ID** 1475**Other Names**

CSTA; STF1; STFA; Cystatin-A; Cystatin-AS; Stefin-A

Dilution

WB~~Western Blot: 1/500 - 1/2000. Immunohistochemistry: 1/100 - 1/300. Immunofluorescence: 1/200 - 1/1000. ELISA: 1/5000. Not yet tested in other applications.

Format

Liquid in PBS containing 50% glycerol, 0.5% BSA and 0.09% (W/V) sodium azide.

Storage Conditions

-20°C

Cystatin A Polyclonal Antibody - Protein Information**Name** CSTA**Synonyms** STF1, STFA**Function**

This is an intracellular thiol proteinase inhibitor. Has an important role in desmosome-mediated cell-cell adhesion in the lower levels of the epidermis.

Cellular Location

Cytoplasm.

Tissue Location

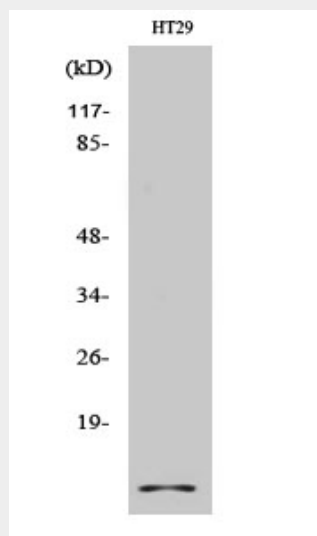
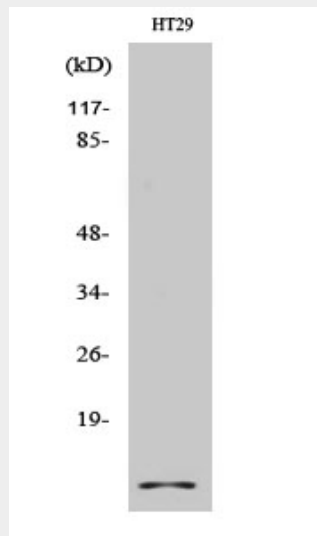
Expressed in the skin throughout the epidermis.

Cystatin A Polyclonal Antibody - Protocols

Provided below are standard protocols that you may find useful for product applications.

- [Western Blot](#)
- [Blocking Peptides](#)
- [Dot Blot](#)
- [Immunohistochemistry](#)
- [Immunofluorescence](#)
- [Immunoprecipitation](#)
- [Flow Cytometry](#)
- [Cell Culture](#)

Cystatin A Polyclonal Antibody - Images



Cystatin A Polyclonal Antibody - Background

This is an intracellular thiol proteinase inhibitor. Has an important role in desmosome-mediated cell-cell adhesion in the lower levels of the epidermis.