

**CYP2B6 Polyclonal Antibody**  
Catalog # AP69392**Specification****CYP2B6 Polyclonal Antibody - Product Information**

Application	WB
Primary Accession	<a href="#">P20813</a>
Reactivity	Human
Host	Rabbit
Clonality	Polyclonal

**CYP2B6 Polyclonal Antibody - Additional Information****Gene ID** 1555**Other Names**

CYP2B6; Cytochrome P450 2B6; 1; 4-cineole 2-exo-monooxygenase; CYP11B6; Cytochrome P450 I1B1

**Dilution**

WB~Western Blot: 1/500 - 1/2000. Immunohistochemistry: 1/100 - 1/300. Immunofluorescence: 1/200 - 1/1000. ELISA: 1/5000. Not yet tested in other applications.

**Format**

Liquid in PBS containing 50% glycerol, 0.5% BSA and 0.09% (W/V) sodium azide.

**Storage Conditions**

-20°C

**CYP2B6 Polyclonal Antibody - Protein Information****Name** CYP2B6 {ECO:0000303|PubMed:21289075, ECO:0000312|HGNC:HGNC:2615}**Function**

A cytochrome P450 monooxygenase involved in the metabolism of endocannabinoids and steroids (PubMed: [12865317](http://www.uniprot.org/citations/12865317)), PubMed: [21289075](http://www.uniprot.org/citations/21289075)). Mechanistically, uses molecular oxygen inserting one oxygen atom into a substrate, and reducing the second into a water molecule, with two electrons provided by NADPH via cytochrome P450 reductase (NADPH-- hemoprotein reductase). Catalyzes the epoxidation of double bonds of arachidonoyl ethanolamide (anandamide) to 8,9-, 11,12-, and 14,15- epoxyeicosatrienoic acid ethanolamides (EpETRe-EAs), potentially modulating endocannabinoid system signaling (PubMed: [21289075](http://www.uniprot.org/citations/21289075)). Hydroxylates steroid hormones, including testosterone at C-16 and estrogens at C-2 (PubMed: [12865317](http://www.uniprot.org/citations/12865317), PubMed: [21289075](http://www.uniprot.org/citations/21289075)). Plays a role in the oxidative metabolism of xenobiotics, including plant lipids and drugs (PubMed: [11695850](http://www.uniprot.org/citations/11695850), PubMed: [11695850](http://www.uniprot.org/citations/11695850)).

href="http://www.uniprot.org/citations/22909231" target="\_blank">22909231</a>). Acts as a 1,4-cineole 2-exo- monooxygenase (PubMed:<a href="http://www.uniprot.org/citations/11695850" target="\_blank">11695850</a>).

#### Cellular Location

Endoplasmic reticulum membrane; Peripheral membrane protein. Microsome membrane; Peripheral membrane protein

#### Tissue Location

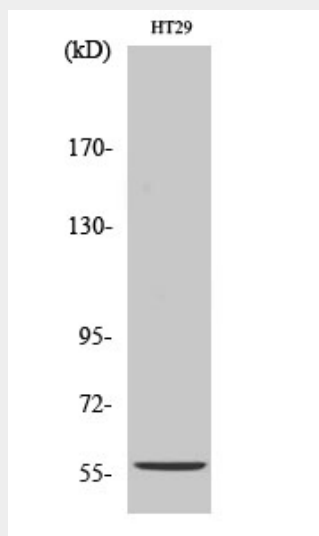
Expressed in liver, lung and heart right ventricle.

### CYP2B6 Polyclonal Antibody - Protocols

Provided below are standard protocols that you may find useful for product applications.

- [Western Blot](#)
- [Blocking Peptides](#)
- [Dot Blot](#)
- [Immunohistochemistry](#)
- [Immunofluorescence](#)
- [Immunoprecipitation](#)
- [Flow Cytometry](#)
- [Cell Culture](#)

### CYP2B6 Polyclonal Antibody - Images



### CYP2B6 Polyclonal Antibody - Background

Cytochromes P450 are a group of heme-thiolate monooxygenases. In liver microsomes, this enzyme is involved in an NADPH-dependent electron transport pathway. It oxidizes a variety of structurally unrelated compounds, including steroids, fatty acids, and xenobiotics. Acts as a 1,4-cineole 2-exo-monooxygenase.