

**C6 Antibody (N-term)**  
**Affinity Purified Rabbit Polyclonal Antibody (Pab)**  
**Catalog # AP6937a**

**Specification**

---

**C6 Antibody (N-term) - Product Information**

Application	IF, WB, IHC-P, FC,E
Primary Accession	<a href="#">P13671</a>
Reactivity	Human
Host	Rabbit
Clonality	Polyclonal
Isotype	Rabbit IgG
Antigen Region	30-58

**C6 Antibody (N-term) - Additional Information**

**Gene ID** 729

**Other Names**

Complement component C6, C6

**Target/Specificity**

This C6 antibody is generated from rabbits immunized with a KLH conjugated synthetic peptide between 30-58 amino acids from the N-terminal region of human C6.

**Dilution**

IF~~1:10~50  
WB~~1:1000  
IHC-P~~1:50~100  
FC~~1:10~50

**Format**

Purified polyclonal antibody supplied in PBS with 0.09% (W/V) sodium azide. This antibody is purified through a protein A column, followed by peptide affinity purification.

**Storage**

Maintain refrigerated at 2-8°C for up to 2 weeks. For long term storage store at -20°C in small aliquots to prevent freeze-thaw cycles.

**Precautions**

C6 Antibody (N-term) is for research use only and not for use in diagnostic or therapeutic procedures.

**C6 Antibody (N-term) - Protein Information**

**Name** C6

**Function** Constituent of the membrane attack complex (MAC) that plays a key role in the innate

and adaptive immune response by forming pores in the plasma membrane of target cells.

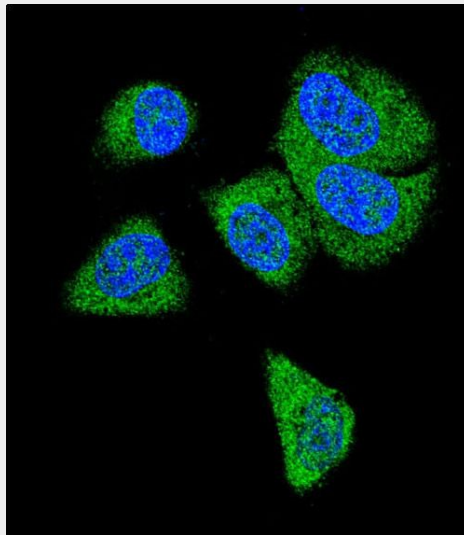
**Cellular Location**  
Secreted.

### **C6 Antibody (N-term) - Protocols**

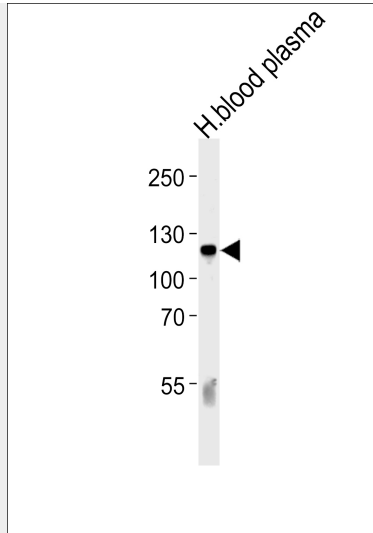
Provided below are standard protocols that you may find useful for product applications.

- [Western Blot](#)
- [Blocking Peptides](#)
- [Dot Blot](#)
- [Immunohistochemistry](#)
- [Immunofluorescence](#)
- [Immunoprecipitation](#)
- [Flow Cytometry](#)
- [Cell Culture](#)

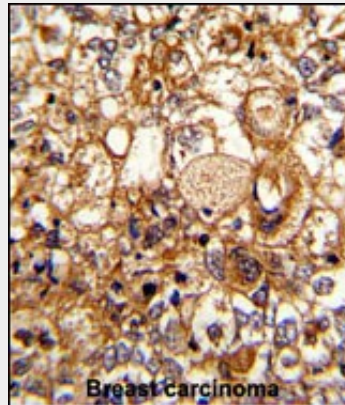
### **C6 Antibody (N-term) - Images**



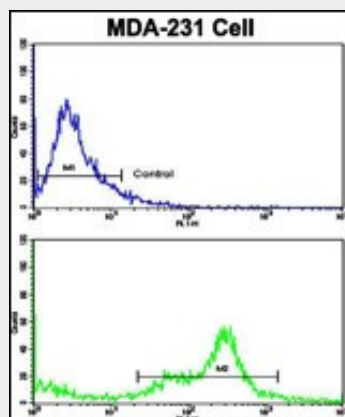
Confocal immunofluorescent analysis of C6 Antibody (N-term)(Cat#AP6937a) with MDA-MB231 cell followed by Alexa Fluor® 488-conjugated goat anti-rabbit IgG (green). DAPI was used to stain the cell nuclear (blue).



Western blot analysis of lysate from human blood plasma tissue lysate, using C6 Antibody (N-term)(Cat. #AP6937a). AP6937a was diluted at 1:1000 at each lane. A goat anti-rabbit IgG H&L(HRP) at 1:5000 dilution was used as the secondary antibody. Lysate at 35ug per lane.



Formalin-fixed and paraffin-embedded human breast carcinoma reacted with C6 Antibody (N-term), which was peroxidase-conjugated to the secondary antibody, followed by DAB staining. This data demonstrates the use of this antibody for immunohistochemistry; clinical relevance has not been evaluated.



Flow cytometric analysis of MDA-231 cells using C6 Antibody (N-term)(bottom histogram) compared to a negative control (top histogram). FITC-conjugated goat-anti-rabbit secondary antibodies were used for the analysis.

### C6 Antibody (N-term) - Background

C6 is a component of complement cascade. It is part of the membrane attack complex which can insert into the cell membrane and cause cell to lyse. People with C6 deficiency are prone to bacterial infection.

#### **C6 Antibody (N-term) - References**

Wu,C., et.al., Proteomics 7 (11), 1775-1785 (2007)

#### **C6 Antibody (N-term) - Citations**

- [Interaction between Multimeric von Willebrand Factor and Complement: A Fresh Look to the Pathophysiology of Microvascular Thrombosis.](#)