

**Cyclin E1 Polyclonal Antibody**  
Catalog # AP69360**Specification**

---

**Cyclin E1 Polyclonal Antibody - Product Information**

Application	WB
Primary Accession	<a href="#">P24864</a>
Reactivity	Human
Host	Rabbit
Clonality	Polyclonal

**Cyclin E1 Polyclonal Antibody - Additional Information****Gene ID** 898**Other Names**

CCNE1; CCNE; G1/S-specific cyclin-E1

**Dilution**

WB~~Western Blot: 1/500 - 1/2000. Immunohistochemistry: 1/100 - 1/300. Immunofluorescence: 1/200 - 1/1000. ELISA: 1/10000. Not yet tested in other applications.

**Format**

Liquid in PBS containing 50% glycerol, 0.5% BSA and 0.09% (W/V) sodium azide.

**Storage Conditions**

-20°C

**Cyclin E1 Polyclonal Antibody - Protein Information****Name** CCNE1**Synonyms** CCNE**Function**

Essential for the control of the cell cycle at the G1/S (start) transition.

**Cellular Location**

Nucleus.

**Tissue Location**

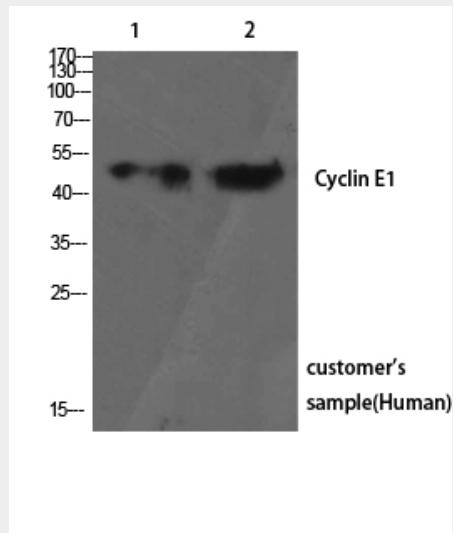
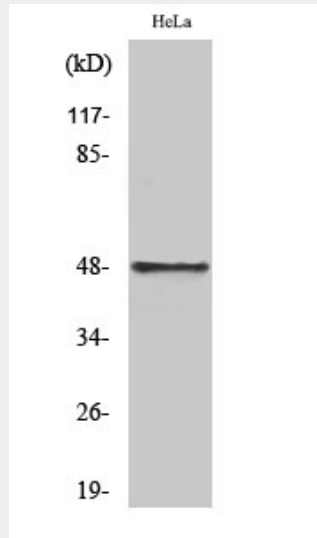
Highly expressed in testis and placenta. Low levels in bronchial epithelial cells.

**Cyclin E1 Polyclonal Antibody - Protocols**

Provided below are standard protocols that you may find useful for product applications.

- [Western Blot](#)
- [Blocking Peptides](#)
- [Dot Blot](#)
- [Immunohistochemistry](#)
- [Immunofluorescence](#)
- [Immunoprecipitation](#)
- [Flow Cytometry](#)
- [Cell Culture](#)

### Cyclin E1 Polyclonal Antibody - Images



### Cyclin E1 Polyclonal Antibody - Background

Essential for the control of the cell cycle at the G1/S (start) transition.