

Cyclin E1 Polyclonal Antibody
Catalog # AP69359**Specification**

Cyclin E1 Polyclonal Antibody - Product Information

Application	WB
Primary Accession	P24864
Reactivity	Human, Mouse, Rat
Host	Rabbit
Clonality	Polyclonal

Cyclin E1 Polyclonal Antibody - Additional Information**Gene ID** 898**Other Names**

CCNE1; CCNE; G1/S-specific cyclin-E1

Dilution

WB~~Western Blot: 1/500 - 1/2000. Immunohistochemistry: 1/100 - 1/300. Immunofluorescence: 1/200 - 1/1000. ELISA: 1/20000. Not yet tested in other applications.

Format

Liquid in PBS containing 50% glycerol, 0.5% BSA and 0.09% (W/V) sodium azide.

Storage Conditions

-20°C

Cyclin E1 Polyclonal Antibody - Protein Information**Name** CCNE1**Synonyms** CCNE**Function**

Essential for the control of the cell cycle at the G1/S (start) transition.

Cellular Location

Nucleus.

Tissue Location

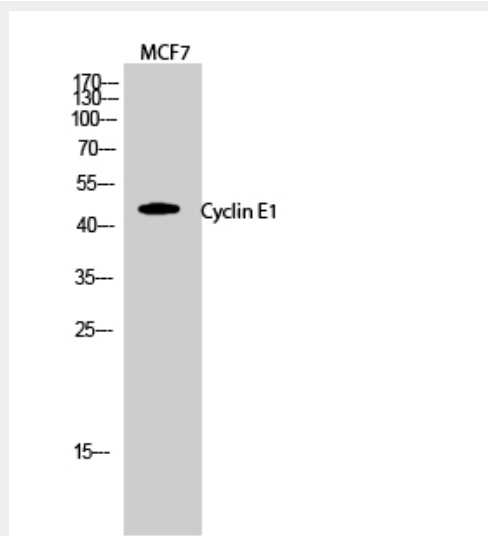
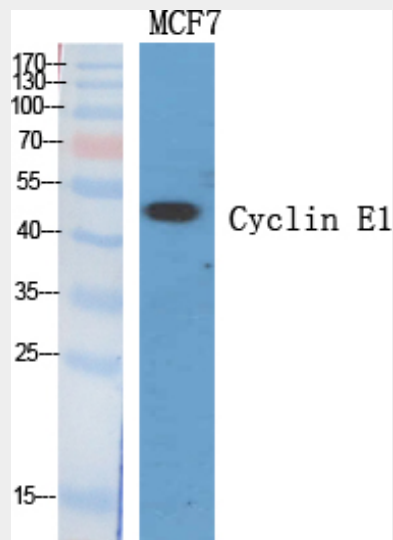
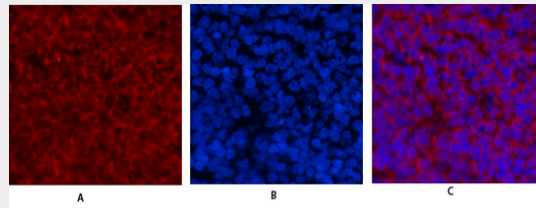
Highly expressed in testis and placenta. Low levels in bronchial epithelial cells.

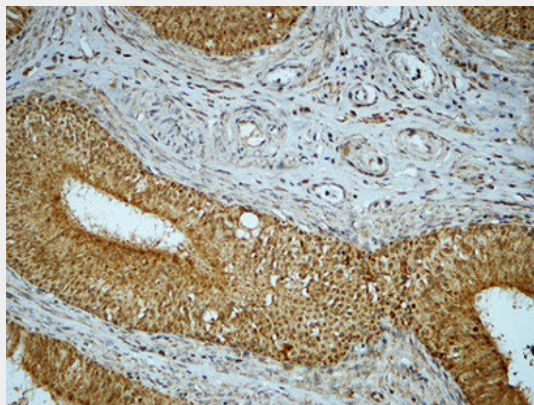
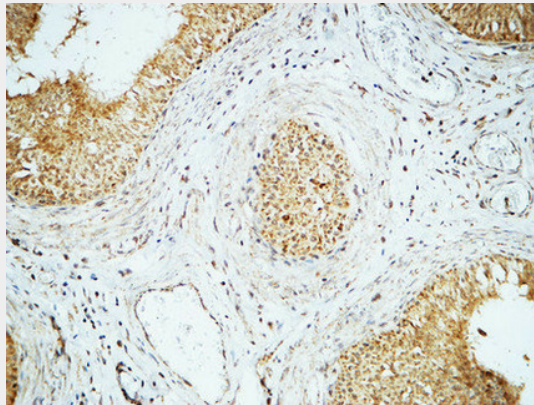
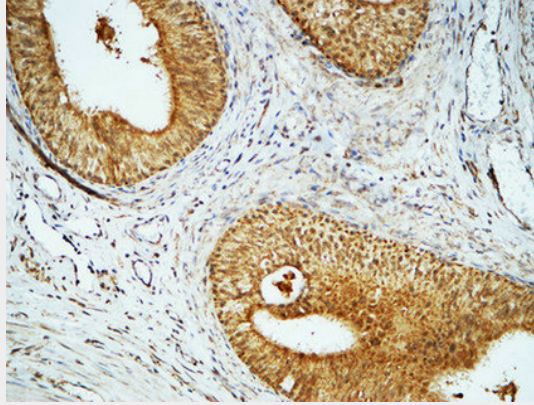
Cyclin E1 Polyclonal Antibody - Protocols

Provided below are standard protocols that you may find useful for product applications.

- [Western Blot](#)
- [Blocking Peptides](#)
- [Dot Blot](#)
- [Immunohistochemistry](#)
- [Immunofluorescence](#)
- [Immunoprecipitation](#)
- [Flow Cytometry](#)
- [Cell Culture](#)

Cyclin E1 Polyclonal Antibody - Images





Cyclin E1 Polyclonal Antibody - Background

Essential for the control of the cell cycle at the G1/S (start) transition.