

**Cyclin D1 Polyclonal Antibody**  
Catalog # AP69356**Specification****Cyclin D1 Polyclonal Antibody - Product Information**

Application	IF
Primary Accession	<a href="#">P24385</a>
Reactivity	Human, Mouse, Rat
Host	Rabbit
Clonality	Polyclonal

**Cyclin D1 Polyclonal Antibody - Additional Information****Gene ID** 595**Other Names**

CCND1; BCL1; PRAD1; G1/S-specific cyclin-D1; B-cell lymphoma 1 protein; BCL-1; BCL-1 oncogene; PRAD1 oncogene

**Dilution**

IF~IF: 1:50-200 Western Blot: 1/500 - 1/2000. Immunohistochemistry: 1/100 - 1/300. ELISA: 1/40000. Not yet tested in other applications.

**Format**

Liquid in PBS containing 50% glycerol, 0.5% BSA and 0.09% (W/V) sodium azide.

**Storage Conditions**

-20°C

**Cyclin D1 Polyclonal Antibody - Protein Information****Name** CCND1 {ECO:0000303|PubMed:8204893, ECO:0000312|HGNC:HGNC:1582}**Function**

Regulatory component of the cyclin D1-CDK4 (DC) complex that phosphorylates and inhibits members of the retinoblastoma (RB) protein family including RB1 and regulates the cell-cycle during G(1)/S transition (PubMed: [1827756](http://www.uniprot.org/citations/1827756), PubMed: [1833066](http://www.uniprot.org/citations/1833066), PubMed: [19412162](http://www.uniprot.org/citations/19412162), PubMed: [33854235](http://www.uniprot.org/citations/33854235), PubMed: [8114739](http://www.uniprot.org/citations/8114739), PubMed: [8302605](http://www.uniprot.org/citations/8302605)). Phosphorylation of RB1 allows dissociation of the transcription factor E2F from the RB/E2F complex and the subsequent transcription of E2F target genes which are responsible for the progression through the G(1) phase (PubMed: [1827756](http://www.uniprot.org/citations/1827756), PubMed: [1833066](http://www.uniprot.org/citations/1833066), PubMed: [19412162](http://www.uniprot.org/citations/19412162), PubMed: [33854235](http://www.uniprot.org/citations/33854235), PubMed: [8114739](http://www.uniprot.org/citations/8114739), PubMed: [8302605](http://www.uniprot.org/citations/8302605)).

href="http://www.uniprot.org/citations/8114739" target="\_blank">8114739</a>, PubMed:<a href="http://www.uniprot.org/citations/8302605" target="\_blank">8302605</a>). Hypophosphorylates RB1 in early G(1) phase (PubMed:<a href="http://www.uniprot.org/citations/1827756" target="\_blank">1827756</a>, PubMed:<a href="http://www.uniprot.org/citations/1833066" target="\_blank">1833066</a>, PubMed:<a href="http://www.uniprot.org/citations/19412162" target="\_blank">19412162</a>, PubMed:<a href="http://www.uniprot.org/citations/8114739" target="\_blank">8114739</a>, PubMed:<a href="http://www.uniprot.org/citations/8302605" target="\_blank">8302605</a>). Cyclin D-CDK4 complexes are major integrators of various mitogenic and antimitogenic signals (PubMed:<a href="http://www.uniprot.org/citations/1827756" target="\_blank">1827756</a>, PubMed:<a href="http://www.uniprot.org/citations/1833066" target="\_blank">1833066</a>, PubMed:<a href="http://www.uniprot.org/citations/19412162" target="\_blank">19412162</a>, PubMed:<a href="http://www.uniprot.org/citations/8302605" target="\_blank">8302605</a>). Also a substrate for SMAD3, phosphorylating SMAD3 in a cell-cycle-dependent manner and repressing its transcriptional activity (PubMed:<a href="http://www.uniprot.org/citations/15241418" target="\_blank">15241418</a>). Component of the ternary complex, cyclin D1/CDK4/CDKN1B, required for nuclear translocation and activity of the cyclin D-CDK4 complex (PubMed:<a href="http://www.uniprot.org/citations/9106657" target="\_blank">9106657</a>). Exhibits transcriptional corepressor activity with INSM1 on the NEUROD1 and INS promoters in a cell cycle-independent manner (PubMed:<a href="http://www.uniprot.org/citations/16569215" target="\_blank">16569215</a>, PubMed:<a href="http://www.uniprot.org/citations/18417529" target="\_blank">18417529</a>).

#### Cellular Location

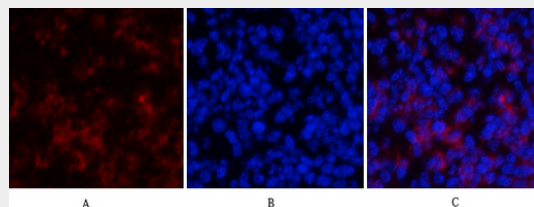
Nucleus. Cytoplasm Nucleus membrane. Note=Cyclin D-CDK4 complexes accumulate at the nuclear membrane and are then translocated to the nucleus through interaction with KIP/CIP family members

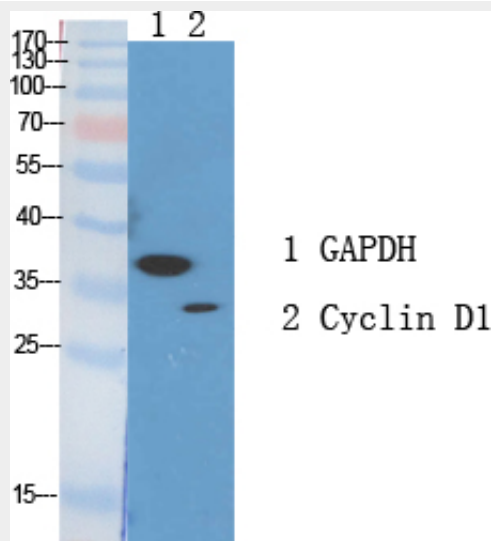
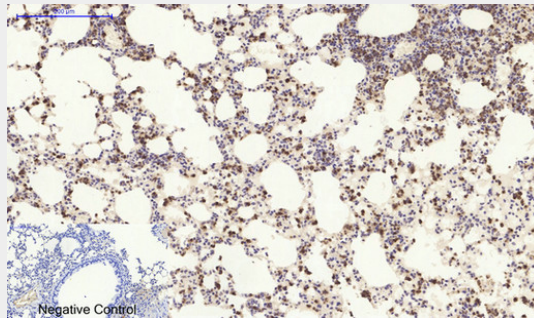
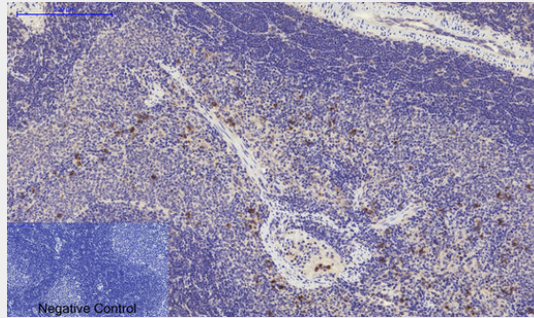
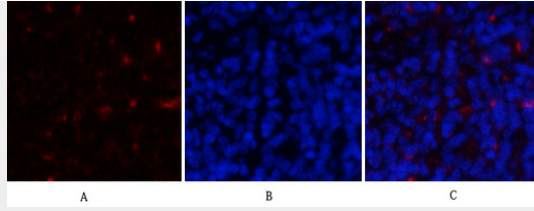
#### Cyclin D1 Polyclonal Antibody - Protocols

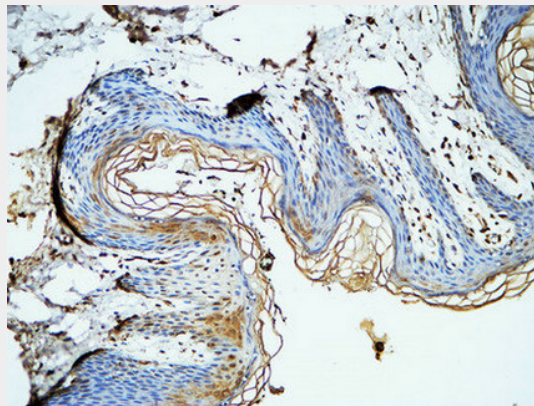
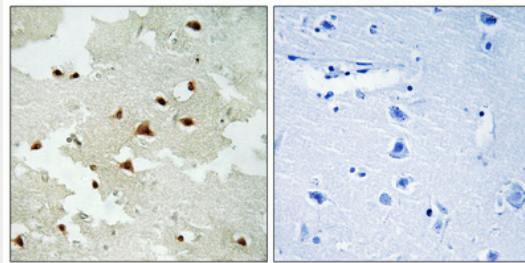
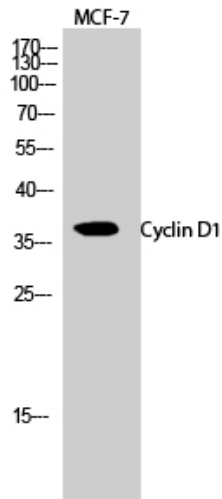
Provided below are standard protocols that you may find useful for product applications.

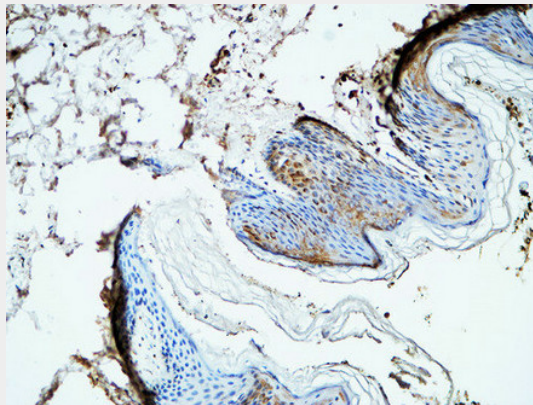
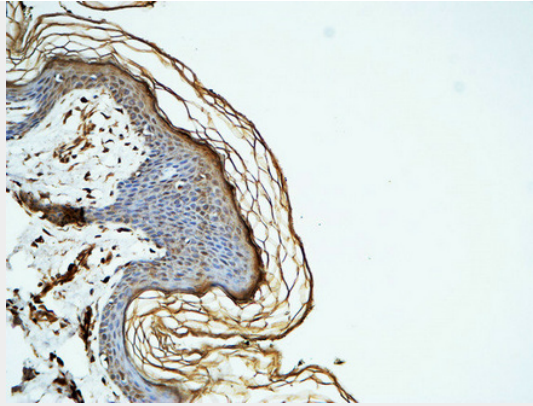
- [Western Blot](#)
- [Blocking Peptides](#)
- [Dot Blot](#)
- [Immunohistochemistry](#)
- [Immunofluorescence](#)
- [Immunoprecipitation](#)
- [Flow Cytometry](#)
- [Cell Culture](#)

#### Cyclin D1 Polyclonal Antibody - Images









### **Cyclin D1 Polyclonal Antibody - Background**

Regulatory component of the cyclin D1-CDK4 (DC) complex that phosphorylates and inhibits members of the retinoblastoma (RB) protein family including RB1 and regulates the cell-cycle during G(1)/S transition. Phosphorylation of RB1 allows dissociation of the transcription factor E2F from the RB/E2F complex and the subsequent transcription of E2F target genes which are responsible for the progression through the G(1) phase. Hypophosphorylates RB1 in early G(1) phase. Cyclin D-CDK4 complexes are major integrators of various mitogenic and antimitogenic signals. Also substrate for SMAD3, phosphorylating SMAD3 in a cell-cycle-dependent manner and repressing its transcriptional activity. Component of the ternary complex, cyclin D1/CDK4/CDKN1B, required for nuclear translocation and activity of the cyclin D-CDK4 complex. Exhibits transcriptional corepressor activity with INSM1 on the NEUROD1 and INS promoters in a cell cycle-independent manner.