

**OGG1 Antibody (C-term)**  
**Affinity Purified Rabbit Polyclonal Antibody (Pab)**  
**Catalog # AP6931b**

**Specification**

---

**OGG1 Antibody (C-term) - Product Information**

Application	WB,E
Primary Accession	<a href="#">O15527</a>
Reactivity	Human, Mouse
Host	Rabbit
Clonality	Polyclonal
Isotype	Rabbit IgG
Antigen Region	318-345

**OGG1 Antibody (C-term) - Additional Information**

**Gene ID** 4968

**Other Names**

N-glycosylase/DNA lyase, 8-oxoguanine DNA glycosylase, 322-, DNA-(apurinic or apyrimidinic site) lyase, AP lyase, OGG1, MMH, MUTM, OGH1

**Target/Specificity**

This OGG1 antibody is generated from rabbits immunized with a KLH conjugated synthetic peptide between 318-345 amino acids from the C-terminal region of human OGG1.

**Dilution**

WB~~1:2000

**Format**

Purified polyclonal antibody supplied in PBS with 0.09% (W/V) sodium azide. This antibody is purified through a protein A column, followed by peptide affinity purification.

**Storage**

Maintain refrigerated at 2-8°C for up to 2 weeks. For long term storage store at -20°C in small aliquots to prevent freeze-thaw cycles.

**Precautions**

OGG1 Antibody (C-term) is for research use only and not for use in diagnostic or therapeutic procedures.

**OGG1 Antibody (C-term) - Protein Information**

**Name** OGG1

**Synonyms** MMH, MUTM, OGH1

**Function** DNA repair enzyme that incises DNA at 8-oxoG residues. Excises

7,8-dihydro-8-oxoguanine and 2,6-diamino-4-hydroxy-5-N- methylformamidopyrimidine (FAPY) from damaged DNA. Has a beta-lyase activity that nicks DNA 3' to the lesion.

#### Cellular Location

Nucleus, nucleoplasm. Nucleus speckle. Nucleus matrix. Note=Together with APEX1 is recruited to nuclear speckles in UVA-irradiated cells [Isoform 2A]; Mitochondrion.

#### Tissue Location

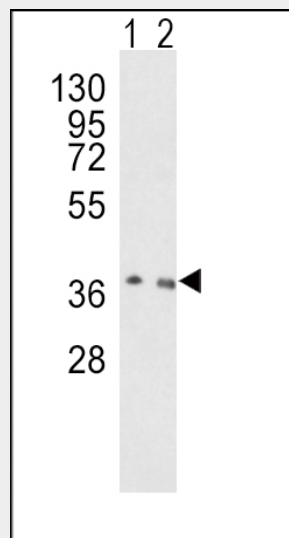
Ubiquitous.

### OGG1 Antibody (C-term) - Protocols

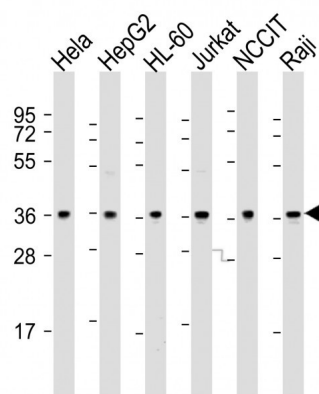
Provided below are standard protocols that you may find useful for product applications.

- [Western Blot](#)
- [Blocking Peptides](#)
- [Dot Blot](#)
- [Immunohistochemistry](#)
- [Immunofluorescence](#)
- [Immunoprecipitation](#)
- [Flow Cytometry](#)
- [Cell Culture](#)

### OGG1 Antibody (C-term) - Images



Western blot analysis of OGG1 Antibody (C-term) (Cat. #AP6931b) in HeLa(lane 1), NIH-3T3(lane 2) cell line lysates (35ug/lane). OGG1 (arrow) was detected using the purified Pab.



All lanes : Anti-OGG1 Antibody (C-term) at 1:2000 dilution Lane 1: HeLa whole cell lysate Lane 2: HepG2 whole cell lysate Lane 3: HL-60 whole cell lysate Lane 4: Jurkat whole cell lysate Lane 5: NCCIT whole cell lysate Lane 6: Raji whole cell lysate Lysates/proteins at 20 µg per lane. Secondary Goat Anti-Rabbit IgG, (H+L), Peroxidase conjugated at 1/10000 dilution. Predicted band size : 39 kDa Blocking/Dilution buffer: 5% NFDM/TBST.

#### OGG1 Antibody (C-term) - Background

OGG1 is the enzyme responsible for the excision of 8-oxoguanine, a mutagenic base byproduct which occurs as a result of exposure to reactive oxygen. The action of this enzyme includes lyase activity for chain cleavage.

#### OGG1 Antibody (C-term) - References

Wozniak,K., et.al., J. Biomed. Biotechnol. 2009, 827562 (2009)