

CSGlcA-T Polyclonal Antibody Catalog # AP69313

Specification

CSGlcA-T Polyclonal Antibody - Product Information

Application	WB
Primary Accession	Q9P2E5
Reactivity	Human
Host	Rabbit
Clonality	Polyclonal

CSGlcA-T Polyclonal Antibody - Additional Information

Gene ID 54480

Other Names

CHPF2; CHSY3; CSGLCAT; KIAA1402; Chondroitin sulfate glucuronyltransferase; CSGlcA-T; Chondroitin glucuronyltransferase; Chondroitin polymerizing factor 2; ChPF-2; Chondroitin synthase 3; ChSy-3; N-acetylgalactosaminyl-proteoglycan 3-beta-g

Dilution

WB~~Western Blot: 1/500 - 1/2000. Immunohistochemistry: 1/100 - 1/300. ELISA: 1/40000. Not yet tested in other applications.

Format

Liquid in PBS containing 50% glycerol, 0.5% BSA and 0.09% (W/V) sodium azide.

Storage Conditions

-20°C

CSGlcA-T Polyclonal Antibody - Protein Information

Name CHPF2

Synonyms CHSY3, CSGLCAT, KIAA1402

Function

Transfers glucuronic acid (GlcUA) from UDP-GlcUA to N- acetylgalactosamine residues on the non-reducing end of the elongating chondroitin polymer. Has no N-acetylgalactosaminyltransferase activity.

Cellular Location

Golgi apparatus, Golgi stack membrane; Single-pass type II membrane protein

Tissue Location

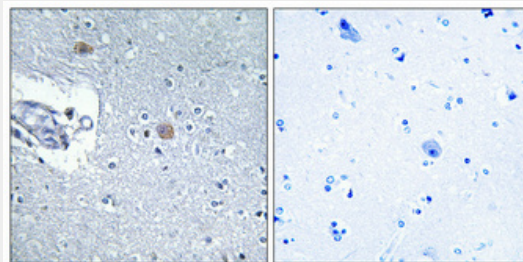
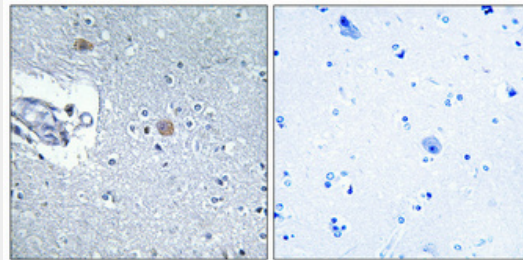
Ubiquitous. Highly expressed in placenta, small intestine and pancreas.

CSGlcA-T Polyclonal Antibody - Protocols

Provided below are standard protocols that you may find useful for product applications.

- [Western Blot](#)
- [Blocking Peptides](#)
- [Dot Blot](#)
- [Immunohistochemistry](#)
- [Immunofluorescence](#)
- [Immunoprecipitation](#)
- [Flow Cytometry](#)
- [Cell Culture](#)

CSGlcA-T Polyclonal Antibody - Images



CSGlcA-T Polyclonal Antibody - Background

Transfers glucuronic acid (GlcUA) from UDP-GlcUA to N- acetylgalactosamine residues on the non-reducing end of the elongating chondroitin polymer. Has no N- acetylgalactosaminyltransferase activity.