

**CRMP-2 Polyclonal Antibody**  
Catalog # AP69297**Specification**

---

**CRMP-2 Polyclonal Antibody - Product Information**

Application	WB
Primary Accession	<a href="#">Q16555</a>
Reactivity	Human, Mouse, Rat
Host	Rabbit
Clonality	Polyclonal

**CRMP-2 Polyclonal Antibody - Additional Information****Gene ID** 1808**Other Names**

DPYSL2; CRMP2; ULIP2; Dihydropyrimidinase-related protein 2; DRP-2; Collapsin response mediator protein 2; CRMP-2; N2A3; Unc-33-like phosphoprotein 2; ULIP-2

**Dilution**

WB~~Western Blot: 1/500 - 1/2000. Immunohistochemistry: 1/100 - 1/300. ELISA: 1/20000. Not yet tested in other applications.

**Format**

Liquid in PBS containing 50% glycerol, 0.5% BSA and 0.09% (W/V) sodium azide.

**Storage Conditions**

-20°C

**CRMP-2 Polyclonal Antibody - Protein Information****Name** DPYSL2**Synonyms** CRMP2, ULIP2**Function**

Plays a role in neuronal development and polarity, as well as in axon growth and guidance, neuronal growth cone collapse and cell migration. Necessary for signaling by class 3 semaphorins and subsequent remodeling of the cytoskeleton. May play a role in endocytosis.

**Cellular Location**

Cytoplasm, cytosol. Cytoplasm, cytoskeleton. Membrane. Note=Tightly but non-covalently associated with membranes

**Tissue Location**

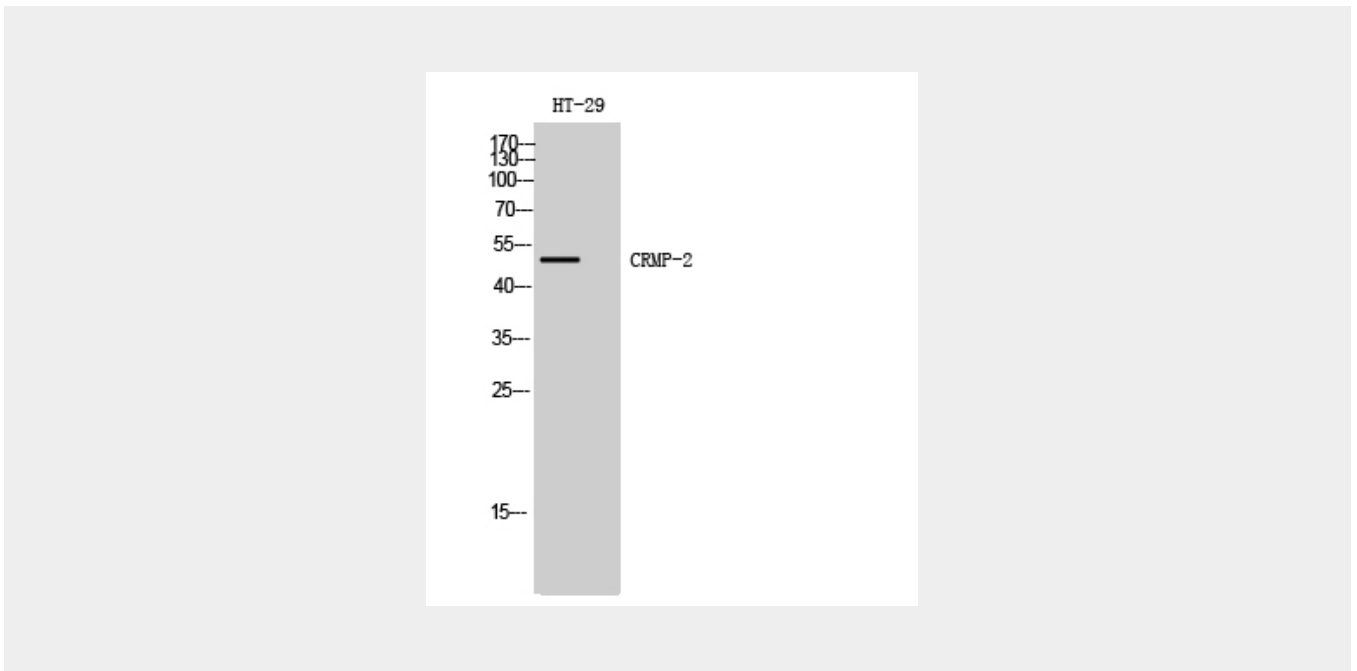
Ubiquitous.

## CRMP-2 Polyclonal Antibody - Protocols

Provided below are standard protocols that you may find useful for product applications.

- [Western Blot](#)
- [Blocking Peptides](#)
- [Dot Blot](#)
- [Immunohistochemistry](#)
- [Immunofluorescence](#)
- [Immunoprecipitation](#)
- [Flow Cytometry](#)
- [Cell Culture](#)

## CRMP-2 Polyclonal Antibody - Images



## CRMP-2 Polyclonal Antibody - Background

Plays a role in neuronal development and polarity, as well as in axon growth and guidance, neuronal growth cone collapse and cell migration. Necessary for signaling by class 3 semaphorins and subsequent remodeling of the cytoskeleton. May play a role in endocytosis.