

Crk II Polyclonal Antibody
Catalog # AP69295**Specification**

Crk II Polyclonal Antibody - Product Information

Application	WB
Primary Accession	P46108
Reactivity	Human, Mouse, Rat, Monkey
Host	Rabbit
Clonality	Polyclonal

Crk II Polyclonal Antibody - Additional Information**Gene ID** 1398**Other Names**

CRK; Adapter molecule crk; Proto-oncogene c-Crk; p38

Dilution

WB~~Western Blot: 1/500 - 1/2000. Immunohistochemistry: 1/100 - 1/300. Immunofluorescence: 1/200 - 1/1000. ELISA: 1/5000. Not yet tested in other applications.

Format

Liquid in PBS containing 50% glycerol, 0.5% BSA and 0.09% (W/V) sodium azide.

Storage Conditions

-20°C

Crk II Polyclonal Antibody - Protein Information**Name** CRK**Function**

Involved in cell branching and adhesion mediated by BCAR1- CRK-RAPGEF1 signaling and activation of RAP1.

Cellular Location

Cytoplasm. Cell membrane. Note=Translocated to the plasma membrane upon cell adhesion.

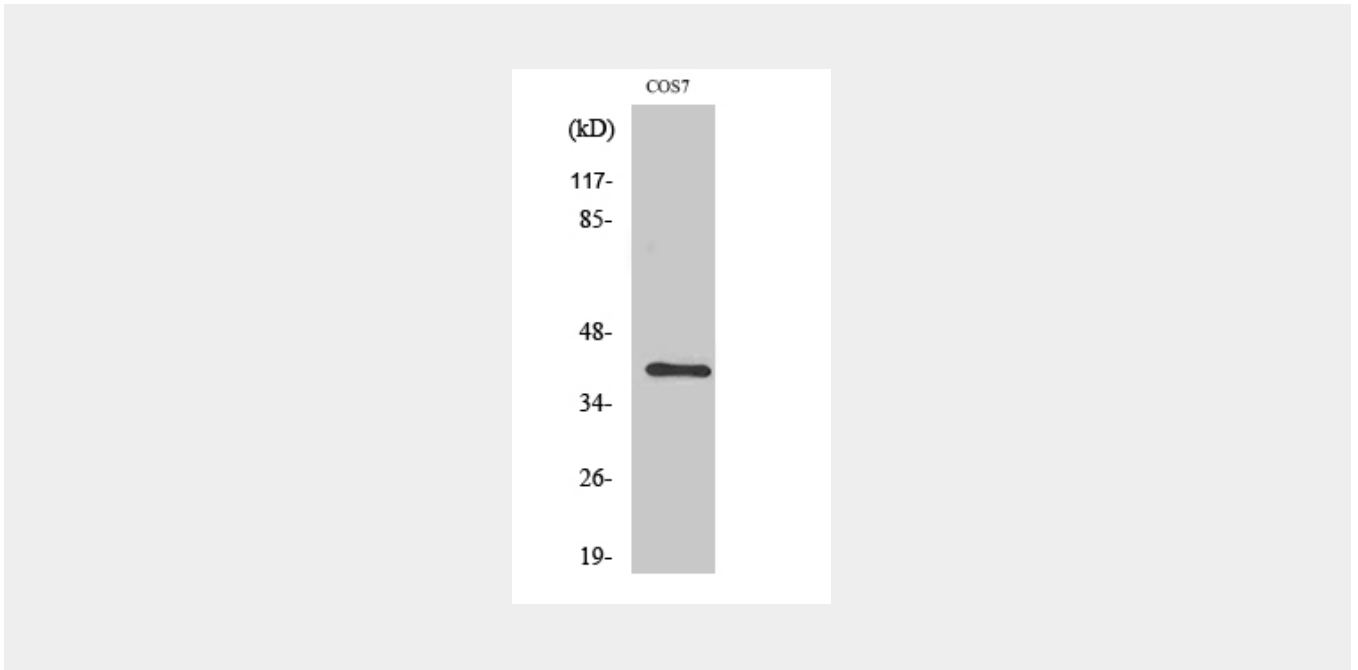
Crk II Polyclonal Antibody - Protocols

Provided below are standard protocols that you may find useful for product applications.

- [Western Blot](#)
- [Blocking Peptides](#)
- [Dot Blot](#)

- [Immunohistochemistry](#)
- [Immunofluorescence](#)
- [Immunoprecipitation](#)
- [Flow Cytometry](#)
- [Cell Culture](#)

Crk II Polyclonal Antibody - Images



Crk II Polyclonal Antibody - Background

Isoform Crk-II: Regulates cell adhesion, spreading and migration. Mediates attachment-induced MAPK8 activation, membrane ruffling and cell motility in a Rac-dependent manner. Involved in phagocytosis of apoptotic cells and cell motility via its interaction with DOCK1 and DOCK4. May regulate the EFNA5-EPHA3 signaling.