

CRABP-II Polyclonal Antibody
Catalog # AP69277**Specification**

CRABP-II Polyclonal Antibody - Product Information

Application	WB
Primary Accession	P29373
Reactivity	Human, Mouse, Rat
Host	Rabbit
Clonality	Polyclonal

CRABP-II Polyclonal Antibody - Additional Information**Gene ID** 1382**Other Names**

CRABP2; Cellular retinoic acid-binding protein 2; Cellular retinoic acid-binding protein II; CRABP-II

Dilution

WB~~Western Blot: 1/500 - 1/2000. Immunohistochemistry: 1/100 - 1/300. ELISA: 1/20000. Not yet tested in other applications.

Format

Liquid in PBS containing 50% glycerol, 0.5% BSA and 0.09% (W/V) sodium azide.

Storage Conditions

-20°C

CRABP-II Polyclonal Antibody - Protein Information**Name** CRABP2**Function**

Transports retinoic acid to the nucleus. Regulates the access of retinoic acid to the nuclear retinoic acid receptors.

Cellular Location

Cytoplasm. Endoplasmic reticulum. Nucleus. Note=Upon ligand binding, a conformation change exposes a nuclear localization motif and the protein is transported into the nucleus

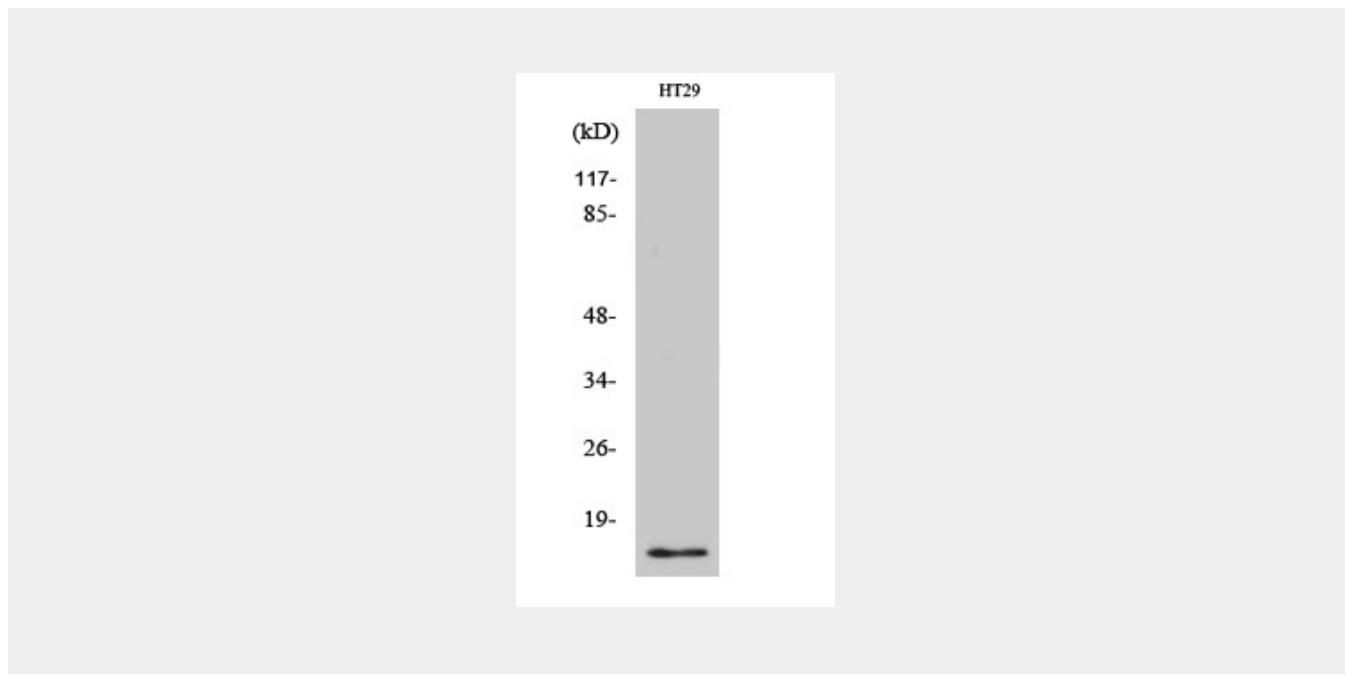
CRABP-II Polyclonal Antibody - Protocols

Provided below are standard protocols that you may find useful for product applications.

- [Western Blot](#)
- [Blocking Peptides](#)

- [Dot Blot](#)
- [Immunohistochemistry](#)
- [Immunofluorescence](#)
- [Immunoprecipitation](#)
- [Flow Cytometry](#)
- [Cell Culture](#)

CRABP-II Polyclonal Antibody - Images



CRABP-II Polyclonal Antibody - Background

Transports retinoic acid to the nucleus. Regulates the access of retinoic acid to the nuclear retinoic acid receptors.